

Scientists establish first lethal mouse model for COVID-19

August 27 2020

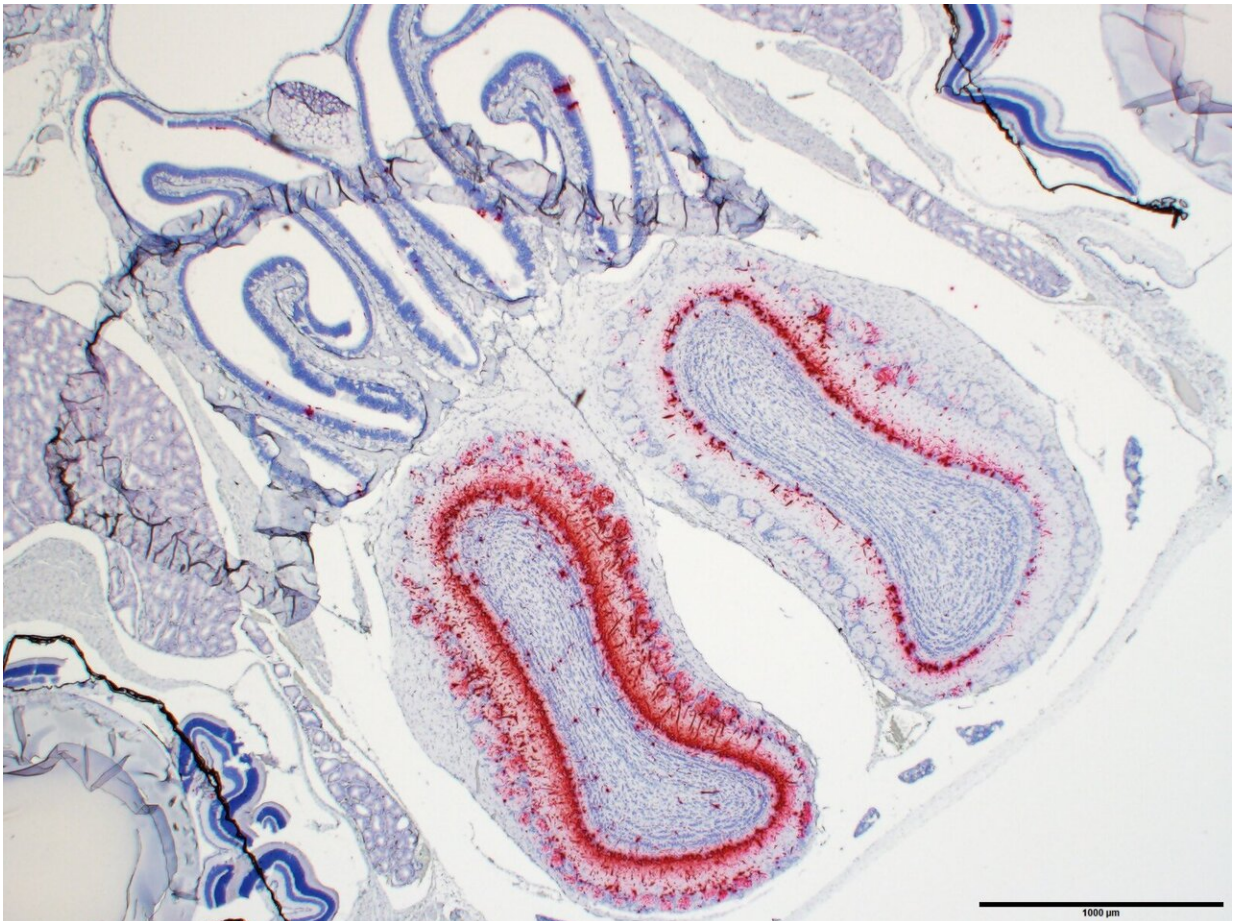


Image shows SARS-CoV-2 viral RNA detected in the nasal epithelium, olfactory bulbs, and eyes of transgenic mice expressing human ACE2, the receptor for SARS-CoV-2, by RNA in situ hybridization. Credit: Joseph W. Golden and Xiankun Zeng, USAMRIID

Army scientists have developed the first lethal mouse model of SARS-CoV-2, the virus that causes COVID-19, using mice that were genetically engineered to express the human ACE2 gene—a key mechanism by which the virus enters human cells. In addition to shedding light on the pathogenesis of COVID-19, this work directly contributes to the advancement of medical countermeasures against the virus.

A preview of the paper, authored by Joseph W. Golden, Ph.D. and colleagues at the U.S. Army Medical Research Institute of Infectious Diseases, appears online this week in *JCI Insight*, a journal published by the American Society for Clinical Investigation.

Developing a small animal model that mirrors the course of human [disease](#) is an essential step in advancing vaccines, diagnostics, and treatments to combat this international health crisis. Previous research on SARS-CoV, the [virus](#) responsible for the 2003 global outbreak of Severe Acute Respiratory Syndrome, revealed that the virus binds to target cells by means of an interaction between the 139 kDa viral spike protein and the host angiotensin-converting enzyme 2, or ACE2, protein.

The novel coronavirus, SARS-CoV-2, uses the same mechanism to infect cells. In [normal mice](#), however, the virus does not easily bind to ACE2, making it difficult to study the course of infection. So Golden and the USAMRIID team used a special type of [mice](#) called K18-hACE2, which are specially bred with the human ACE protein instead of the mouse version. This mouse strain, developed for the original SARS-CoV outbreak by the Stanley Perlman laboratory at the University of Iowa in the early 2000s, was revived and recently produced at the Jackson Laboratory.

USAMRIID's study used two groups of 14 K18-hACE2 mice, infected with two different doses of SARS-CoV-2 administered by the intranasal

route, to simulate how humans are exposed to the virus. Each group contained seven male and seven female mice. On day 3, four mice per group were euthanized to assess disease severity, while the remaining ten mice per group were monitored up to 28 days. Overall, the K18-hACE2 mice developed acute disease, including [weight loss](#), lung injury, and brain infection, and ultimately succumbed to the disease, according to the authors.

In addition, the team infected three other types of mice—C57BL/6, BALB/c and RAG2 deficient mice—with a challenge dose of the virus. These animals did not lose weight and none succumbed to the disease.

"Given that the K18-hACE2 animal model is commercially available, it provides an important platform for evaluation of medical countermeasures across multiple laboratories," said Golden.

Provided by US Army Medical Research Institute of Infectious Diseases

Citation: Scientists establish first lethal mouse model for COVID-19 (2020, August 27) retrieved 2 March 2023 from <https://medicalxpress.com/news/2020-08-scientists-lethal-mouse-covid-.html>

<p>This document is subject to copyright. Apart from any fair dealing for the purpose of private study or research, no part may be reproduced without the written permission. The content is provided for information purposes only.</p>
--