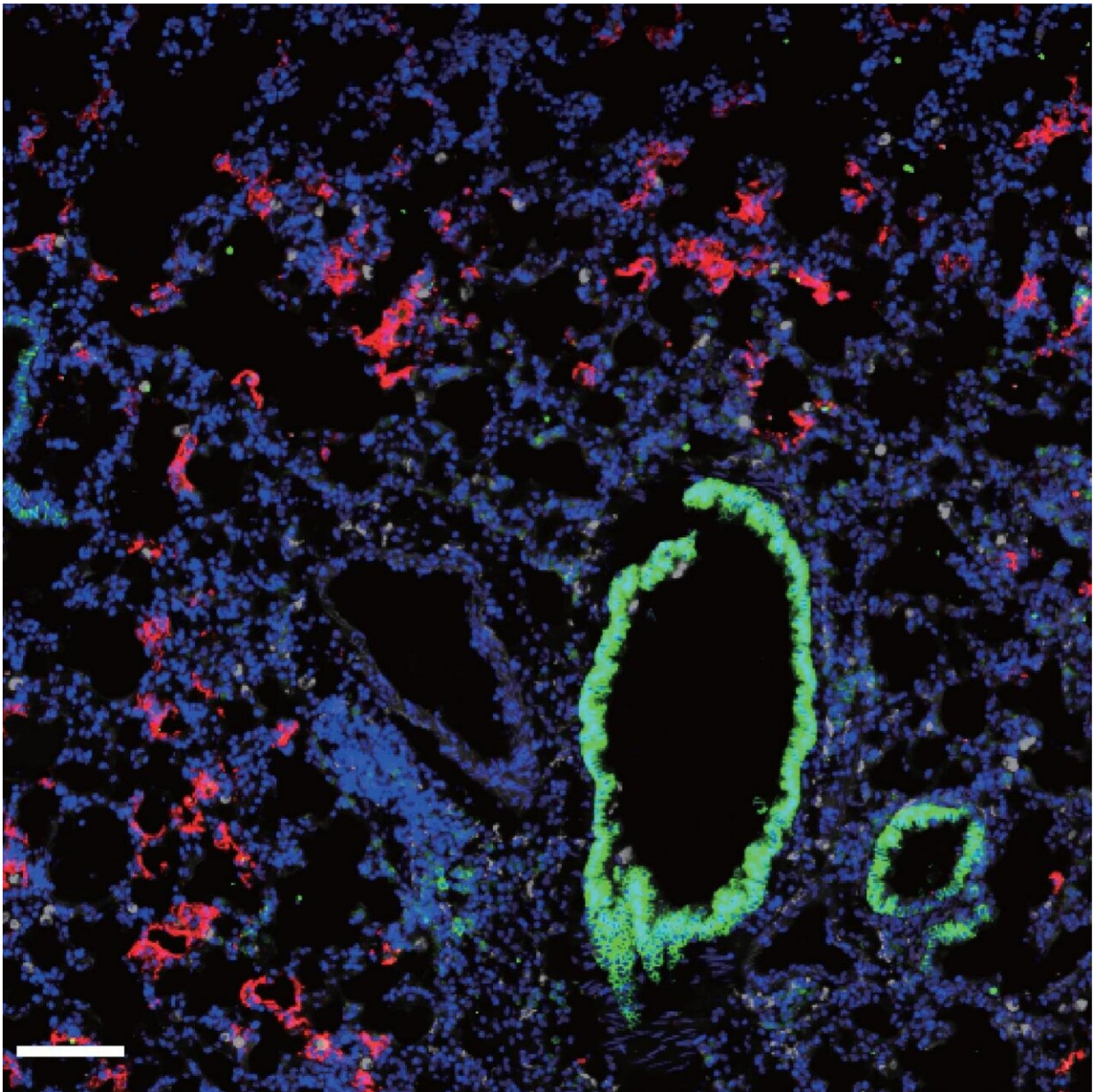


# Researchers develop new mouse model for SARS-CoV-2

August 4 2020

---



Fluorescence microscopy shows the presence of SARS-CoV-2 (red) within the lungs of mice expressing the human ACE2 protein. Credit: Israelow et al. Originally published in *Journal of Experimental Medicine*.

Researchers at Yale University School of Medicine have developed a new mouse model to study SARS-CoV-2 infection and disease and to accelerate testing of novel treatments and vaccines against the novel coronavirus. The study, published today in the *Journal of Experimental Medicine* (JEM), also suggests that, rather than protecting the lungs, key antiviral signaling proteins may actually cause much of the tissue damage associated with COVID-19.

Animal models that recapitulate SARS-CoV-2 infection and disease are urgently needed to help researchers understand the virus, develop therapies, and identify potential vaccine candidates. Mice are the most widely used laboratory animals, but they cannot be infected with SARS-CoV-2 because the virus is unable to employ the mouse version of ACE2, the cell surface receptor protein that the virus uses to enter [human cells](#).

SARS-CoV-2 can infect mice genetically engineered to produce the human version of ACE2. However, the availability of these animals is low and limited to a single mouse strain, preventing researchers from investigating how the virus impacts mice that are immunocompromised or obese, conditions that significantly increase the fatality rate in humans.

In the new study, a team of researchers led by Akiko Iwasaki at Yale University School of Medicine developed an alternative mouse model of SARS-CoV-2 infection in which the animals are first infected with a different, harmless virus carrying the human ACE2 gene. Mice infected

with this virus produce the human ACE2 protein and can then be infected with SARS-CoV-2. Iwasaki and colleagues found that SARS-CoV-2 can replicate in these mice and induce an [inflammatory response](#) similar to that observed in COVID-19 patients, where a wide variety of immune cells are activated and recruited to the lungs. "In addition, the infected mice also rapidly develop neutralizing antibodies against SARS-CoV-2," Iwasaki says.

The body's response to viral infection often depends on signaling molecules called type I interferons that can activate immune cells and induce the production of antiviral proteins and antibodies. But too much type I interferon, especially when the production is delayed, can lead to excessive inflammation and tissue damage. Indeed, while type I interferon signaling protects against the related coronavirus MERS-CoV, it causes lung damage in response to SARS-CoV-1, the virus responsible for a previous coronavirus outbreak in 2002-2003.

The role of type I interferons in COVID-19 is currently unclear. Iwasaki and colleagues found that, similar to COVID-19 patients, mice infected with SARS-CoV-2 activate a large number of genes associated with type I interferon signaling. The researchers then used their model system to infect mice lacking key components of the type I [interferon](#) pathway and found that they were no worse at controlling SARS-CoV-2 infection. However, these animals recruited fewer inflammatory immune cells into their lungs. "These results indicate that type I interferons do not restrict SARS-CoV-2 replication, but they may play a pathological role in COVID-19 respiratory inflammation," Iwasaki says. "This is especially concerning because type I interferons are currently being used as a treatment for COVID-19. The early timing of the IFN treatment will be important for it to provide protection and benefit."

Iwasaki adds, "The [mouse model](#) we developed offers a broadly available and highly adaptable [animal model](#) to understand critical

aspects of SARS-CoV-2 viral infection, replication, pathogenesis, and protection using authentic patient-derived [virus](#). The model provides a vital platform for testing prophylactic and therapeutic strategies to combat COVID-19."

**More information:** Benjamin Israelow et al, Mouse model of SARS-CoV-2 reveals inflammatory role of type I interferon signaling, *Journal of Experimental Medicine* (2020). [DOI: 10.1084/jem.20201241](https://doi.org/10.1084/jem.20201241)

Provided by Rockefeller University Press

Citation: Researchers develop new mouse model for SARS-CoV-2 (2020, August 4) retrieved 22 November 2023 from <https://medicalxpress.com/news/2020-08-mouse-sars-cov-.html>

<p>This document is subject to copyright. Apart from any fair dealing for the purpose of private study or research, no part may be reproduced without the written permission. The content is provided for information purposes only.</p>
--