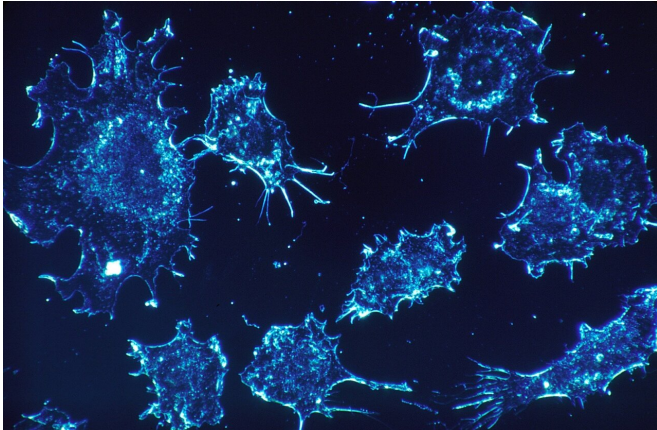


# Highly invasive lung cancer cells have longer 'fingers'

July 27 2020



Credit: Pixabay/CC0 Public Domain

Tiny finger-like projections called filopodia drive invasive behavior in a rare subset of lung cancer cells, researchers at Winship Cancer Institute of Emory University have found.

Adam Marcus' lab has developed innovative techniques for separating "leaders" and "followers," subpopulations of tumor [cells](#) that cooperate during the process of metastasis. The lab's new analysis of what molecular features distinguish leader from follower lung cancer cells focuses on filopodia. The results are published in *Science Advances*.

The findings could help researchers develop treatments that prevent cancer from spreading, by understanding the rare cells within a tumor necessary for deadly metastasis. The durable epigenetic changes that distinguish leader cells and invasive behavior may appear in several types of cancer, says Marcus. He is professor of hematology and [medical oncology](#) at Emory, and associate director for basic research and shared resources at Winship.

Marcus' previous research has shown how leader cells and their more common counterparts, follower cells, work together to create an invasive pack. The two types of tumor cells depend upon each other for mobility and survival, but have distinct patterns of gene activity and even different shapes.

In particular, leader cells display longer filopodia than follower cells. This is part of what the investigation by graduate student Emily Summerbell (who recently obtained her Ph.D.), associate research scientist Janna Mouw, Ph.D. and their colleagues revealed.

"Filopodia are like the fingers of the cell, and help the cell pull its way forward," Summerbell says. See the supplementary video for a depiction of filopodia and invasive behavior.

Having longer filopodia is linked with a gene called MYO10, which encodes a component of the internal cellular skeleton stabilizing filopodia, Summerbell and Mouw found. MYO10 was the gene that was the most up-regulated and hypomethylated in leader cells, compared with follower cells, and both long filopodia and invasive behavior depend on MYO10 activity.

"It was known that MYO10 was linked to invasion and metastasis, but this is the first evidence that it is playing this specific role in a rare subset of cells," Marcus says. "This could help us look for these rare cells in patient tumors to gauge how potentially invasive they are."

Leader cells also secrete fibronectin, a sticky extracellular protein, while follower cells do not. The MYO10 protein helps filopodia rearrange fibronectin molecules into fibrils, but it does not appear to interact with fibronectin directly.

"As the leader cell filopodia pull on the [extracellular matrix](#), they change this matrix from a random mesh into long parallel tracks in front of the cell,

paving a road for a group of cells," Summerbell says.

Filopodia are sometimes described as resembling antennae—or precursors of more stable cellular structures.

"We're observing that in leader cells, filopodia are not only sensors of the extracellular environment but also actively participate in reorganizing the extracellular matrix," Marcus says.

Summerbell and Mouw also studied other changes that distinguish leader cells, such as elevated expression of the Jagged1 gene. Jagged1 encodes a receptor for the Notch pathway, whose activity lies behind activation of MYO10. MYO10 and Jagged/Notch activation may be generalizable to patient samples and other types of cancer.

**More information:** Emily R. Summerbell et al. Epigenetically heterogeneous tumor cells direct collective invasion through filopodia-driven fibronectin micropatterning, *Science Advances* (2020). DOI: [10.1126/sciadv.aaz6197](https://doi.org/10.1126/sciadv.aaz6197)

Provided by Emory University

APA citation: Highly invasive lung cancer cells have longer 'fingers' (2020, July 27) retrieved 8 December 2022 from <https://medicalxpress.com/news/2020-07-highly-invasive-lung-cancer-cells.html>

*This document is subject to copyright. Apart from any fair dealing for the purpose of private study or research, no part may be reproduced without the written permission. The content is provided for information purposes only.*