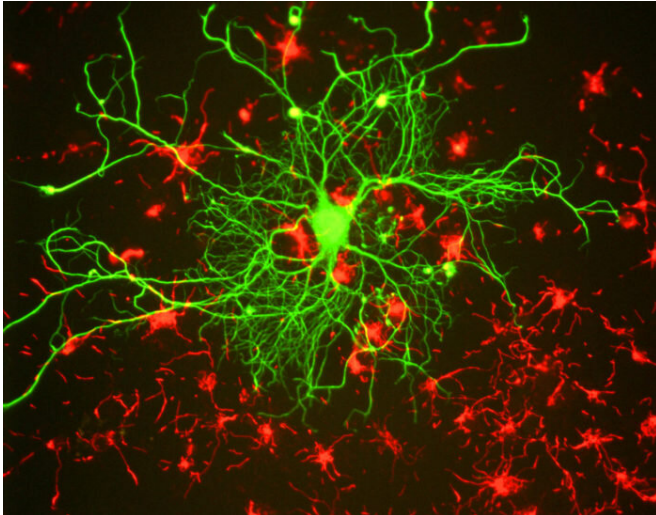


# Study hints at early sign of Alzheimer's degeneration

30 June 2020, by Maggie MacLellan



BrainsCAN researchers examined an area in the brain's subcortical region called the basal forebrain that includes cholinergic neurons. These neurons are known to be severely damaged by Alzheimer's disease. Credit: University of Western Ontario

Researchers have moved one step closer to identifying targets for brain degeneration that occur decades before symptoms of Alzheimer's disease appear—a much sought-after clue that might open the door to early treatment.

"Alzheimer's is not a simple disease. Acting before the disease develops is the ultimate goal of treatment," said Sara Fernández-Cabello, first author of the paper and postdoctoral research fellow at the Norwegian Centre for Mental Disorders Research.

Supported by Western's BrainsCAN, the study, "Basal forebrain volume reliably predicts the cortical spread of Alzheimer's [degeneration](#)," was recently published in the journal *Brain*.

Alzheimer's disease does not affect the brain

uniformly, but rather progresses in stages with some areas of brain degeneration preceding degeneration in other areas. Underlying this neurodegenerative cascade presumably is the propagation of abnormal proteins in Alzheimer's disease.

Researchers examined an area in the brain's subcortical region called the basal forebrain that includes [cholinergic neurons](#). These neurons are known to be severely damaged by Alzheimer's disease.

The study confirmed that degeneration in the basal forebrain can predict damage to other areas of the brain, specifically the [entorhinal cortex](#)—an area in the [medial temporal lobe](#) responsible for memory, navigation and the perception of time.

"It's been known for a long time that the cholinergic neurons are particularly devastated in Alzheimer's disease," said Schulich School of Medicine & Dentistry professor Taylor Schmitz, senior author. "This study confirmed that cholinergic denervation is an early stage of Alzheimer's that precedes and predicts cortical degeneration."

Fernández-Cabello added that the cholinergic system of the basal forebrain is highly susceptible to the accumulation of Alzheimer's disease malformed proteins.

"The basal forebrain system is one of the earliest areas to accumulate these malformed proteins and this can, in principle, propagate throughout the brain, affecting other regions," she said.

For the study, the authors used more than 835 samples from the Alzheimer's Disease Neuroimaging Initiative (ADNI) database to obtain indices of grey matter in the basal forebrain and entorhinal cortex.

They then measured the change in the entorhinal

cortex over a two-year period to determine if baseline volume in the basal forebrain predicted an entorhinal cortex change.

To determine if the change was connected to biological Alzheimer's disease, the authors identified a group of individuals in the ADNI database with pTau and amyloid- $\beta$  proteins—known as abnormal Alzheimer's disease biomarkers. Using these biomarkers, they were able to verify that the degeneration pattern from the basal forebrain to the entorhinal cortex was only linked to individuals who had abnormal pTau and amyloid- $\beta$  proteins.

"Traditionally, Alzheimer's [disease](#) is looked at through the lens of either structural neurodegeneration or the accumulation of amyloid- $\beta$  and pTau proteins, but rarely are these integrated systematically into single studies," Schmitz said. "For this study, we put together these biomarkers of amyloid- $\beta$  and pTau, integrated with longitudinal structural MRI [of the brain's grey matter] and then tracked the evolution both in time and across clinical severity."

These findings could offer possibilities for health-care providers and patients in the future.

"We're trying to understand the brain pathways between the basal forebrain and other brain regions that lead to memory deficits," Fernández-Cabello said. "If there is a cholinergic vulnerability that produces these downstream effects, then we can target this with drugs or interventions, potentially limiting the cascade of degeneration from the basal [forebrain](#)."

**More information:** Sara Fernández-Cabello et al. Basal forebrain volume reliably predicts the cortical spread of Alzheimer's degeneration, *Brain* (2020). [DOI: 10.1093/brain/awaa012](https://doi.org/10.1093/brain/awaa012)

Provided by University of Western Ontario

APA citation: Study hints at early sign of Alzheimer's degeneration (2020, June 30) retrieved 24 September 2022 from <https://medicalxpress.com/news/2020-06-hints-early-alzheimer-degeneration.html>

*This document is subject to copyright. Apart from any fair dealing for the purpose of private study or research, no part may be reproduced without the written permission. The content is provided for information purposes only.*