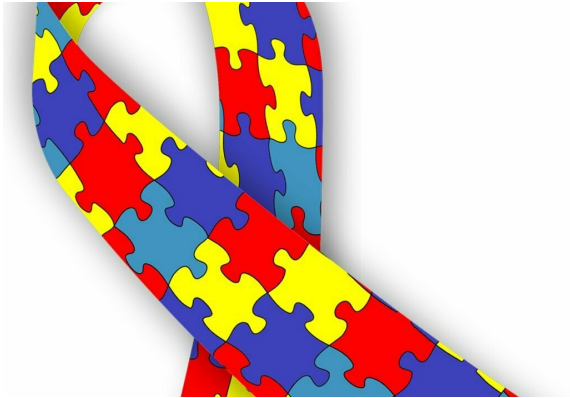


# Researchers use brain imaging to demonstrate weaker neural suppression for those with autism

29 May 2020, by Kelly Glynn



Credit: CC0 Public Domain

According to the National Autism Association, people with autism spectrum disorder (ASD) may experience sensory hypersensitivity. A University of Minnesota Medical School researcher recently published an article in *Nature Communications* that illustrates why that may be true by showing the differences in visual motion perception in ASD are accompanied by weaker neural suppression in the visual cortex of the brain.

While experts in neuroscience and psychiatry recognize that differences in sensory functioning are common among people with ASD, it is not currently understood what is happening differently in the brain on a neural level to cause the variations in sensory perception.

Using functional MRI and visual tasks, lead author Michael-Paul Schallmo, Ph.D., assistant professor in the Department of Psychiatry at the U of M Medical School, and a team of researchers at the University of Washington found:

- People with ASD show enhanced

perception of large moving stimuli compared to neuro-typical individuals;

- Brain responses to these [visual stimuli](#) are different among young adults with ASD compared to neuro-typical individuals. In particular, [brain responses](#) in visual cortex show less neural suppression in ASD;
- A [computational model](#) can describe the difference in brain responses.

"Our work suggests that there may be differences in how people with ASD focus their attention on objects in the visual world that could explain the difference in neural responses we are seeing and may be linked to symptoms like sensory hypersensitivity," Schallmo said.

Schallmo is currently working with collaborators at the U of M on a follow-up study of visual and cognitive functioning in youth with ASD, Tourette syndrome, [attention deficit hyperactivity disorder](#) and obsessive-compulsive disorder. Having a better understanding of how these different disorders affect brain function could lead to new screenings to better identify kids who are at risk for ASD and related conditions. It may also help scientists to find new targets for studies seeking to improve treatments for sensory symptoms in these disorders.

**More information:** Michael-Paul Schallmo et al, Weaker neural suppression in autism, *Nature Communications* (2020). [DOI: 10.1038/s41467-020-16495-z](#)

Provided by University of Minnesota Medical School

APA citation: Researchers use brain imaging to demonstrate weaker neural suppression for those with autism (2020, May 29) retrieved 13 October 2022 from <https://medicalxpress.com/news/2020-05-brain-imaging-weaker-neural-suppression.html>

*This document is subject to copyright. Apart from any fair dealing for the purpose of private study or research, no part may be reproduced without the written permission. The content is provided for information purposes only.*