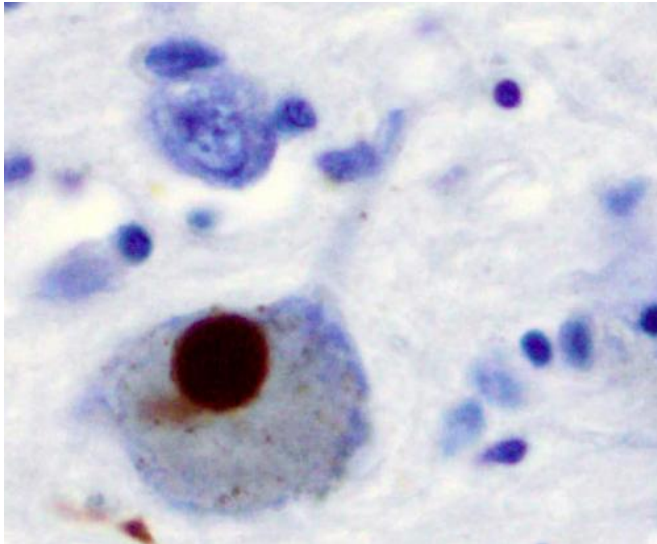


Predictive models could provide more accurate detection of early-stage Parkinson's disease

11 May 2020



Immunohistochemistry for alpha-synuclein showing positive staining (brown) of an intraneuronal Lewy-body in the Substantia nigra in Parkinson's disease. Credit: Wikipedia

How is your sense of smell? Do you find yourself frequently dozing off during the day or thrashing about during dreams? Often, early stage Parkinson's disease does not present with typical motor disturbance symptoms, making diagnosis problematic. Now, neuroscientists at York University have found five different models that use these types of non-motor clinical as well as biological variables to more accurately predict early-stage Parkinson's disease.

Their five-[model](#) analysis is one of the first utilizing only non-motor clinical and biologic variables. Some models performed better than others but all distinguished early stage (preclinical) Parkinson's [disease](#) from healthy, age-matched controls, with better than 80 per cent accuracy. The models may

assist in more timely administration of future treatments as they become available, according to the study published in *Frontiers in Neurology* today.

Using the multiple model method as a first pass for diagnosis would also be a less invasive alternative to using the traditional radioactive tracer scan (DaTscan) usually used to assess patients.

The study's lead author, Ph.D. candidate Charles Leger, and his lab supervisor Joseph DeSouza, associate professor Department of Psychology at York University, say the goal was to develop models that could be used to predict, with greater than 80 per cent efficiency, those with early-stage Parkinson's [pathology](#) versus those without apparent disease.

In the study, two separate analyses were conducted: one for the classification of early Parkinson's disease versus controls, and the other for classification of early Parkinson's versus SWEDD (scans without evidence of dopamine deficit). The term SWEDD refers to the absence, rather than the presence, of an imaging abnormality in patients clinically presumed to have Parkinson's disease.

"Right now, there's no cure for Parkinson's disease. All we know now are the signs and symptoms and we can only treat the symptoms," says DeSouza. "These models could be very useful in differentiating patients who may present with Parkinson's-like symptoms not related to Parkinson's pathology from patients who actually have the disease."

Facilitated and more accurate prediction of early-stage, de novo Parkinson's can allow those positively diagnosed to adopt [lifestyle changes](#) such as regular physical exercise early on that can

improve mobility and balance, says DeSouza.

Researchers used cross-sectional, baseline data from the Parkinson's Progressive Markers Initiative (PPMI). The PPMI data used was confined to non-motor clinical variables (e.g. sense of smell, daytime sleepiness, presence of rapid eye movement behaviour disorder, age, etc.) and biologic variables (e.g. cerebral spinal fluid alpha-synuclein, tau protein, beta-amyloid-142, etc.) Five different model types were "trained" models that could prove useful in helping to differentiate early stage Parkinson's pathology.

"What's unique about this study is that it provides a dual analysis, which hasn't been done before for early Parkinson's disease," says Leger.

The dual analysis included: (a) prediction of early, preclinical Parkinson's vs. controls, then in a separate analysis, (b) early Parkinson's vs. SWEDD (the Parkinson's lookalike condition). The trained models attempted to predict early Parkinson's from controls (a); and early Parkinson's from SWEDD (b).

"Every feature used was first proven relevant in the literature. Of those, we allowed each model to pick out which predictors were most important. No model is guaranteed to provide the best fit," says Leger. "With five models, if you get the same feature that stands out, then you know that particular variable is very important in distinguishing disease. Neurologists could apply one or more of the models to their own data to assist distinguish Parkinson's pathology from pathology masquerading as Parkinson's. Two of the models may be useful in helping to screen those in the SWEDD category with Parkinson's type pathology from those whose pathology is not Parkinson's related."

In both early Parkinson's/control and early Parkinson's/SWEDD analyses, and across all models, hyposmia—a reduced ability to smell and to detect odours—was the single most important feature to distinguish early-onset Parkinson's, followed by rapid eye movement behaviour disorder.

More information: Charles Leger et al, Non-motor Clinical and Biomarker Predictors Enable High Cross-Validated Accuracy Detection of Early PD but Lesser Cross-Validated Accuracy Detection of Scans Without Evidence of Dopaminergic Deficit, *Frontiers in Neurology* (2020). [DOI: 10.3389/fneur.2020.00364](https://doi.org/10.3389/fneur.2020.00364)

Provided by York University

APA citation: Predictive models could provide more accurate detection of early-stage Parkinson's disease (2020, May 11) retrieved 1 May 2021 from <https://medicalxpress.com/news/2020-05-accurate-early-stage-parkinson-disease.html>

This document is subject to copyright. Apart from any fair dealing for the purpose of private study or research, no part may be reproduced without the written permission. The content is provided for information purposes only.