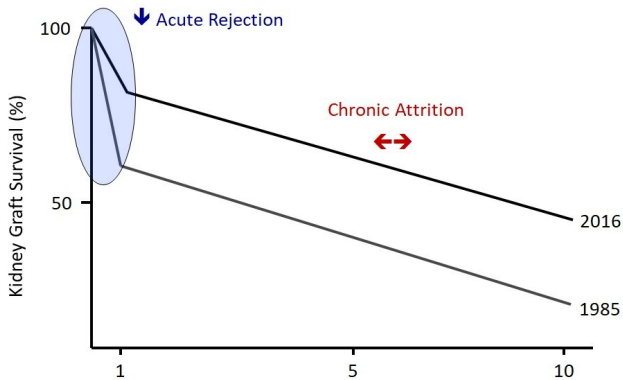


# Immune system discovery could end chronic organ rejection

8 May 2020



Medical advances have helped dramatically lower the rates of acute rejection (within the first year) after transplant but chronic rejection continues to reduce long-term organ survival. Credit: Fadi Lakkis, University of Pittsburgh, data adapted from United States Renal Data System

Frank & Athena Sarris Chair in Transplantation Biology and is scientific director of Pitt's Thomas E. Starzl Transplantation Institute. "The missing link in the field of organ transplantation is a specific way to prevent rejection, and this finding moves us one step closer to that goal."

The immune system is composed of innate and adaptive branches. The innate immune cells are the first to detect foreign organisms in the body and are required to activate the adaptive immune system. Immunological "memory"—which allows our bodies to remember foreign invaders so they can fight them off quicker in the future—was thought to be unique to the adaptive immune system. Vaccines, for example, take advantage of this feature to provide long-term protection against bacteria or viruses. Unfortunately, this very critical function of the immune system is also why transplanted organs are eventually rejected, even in the presence of immune-suppressing drugs.

Chronic rejection of transplanted organs is the leading cause of transplant failure, and one that the field of organ transplantation has not overcome in almost six decades since the advent of immunosuppressive drugs enabled the field to flourish.

Now, a new discovery led by researchers at the University of Pittsburgh School of Medicine and Houston Methodist Hospital suggesting the innate [immune system](#) can specifically remember foreign cells could pave the way to drugs that lengthen long-term survival of transplanted organs. The findings, based on results in a [mouse model](#), are published this week in the journal *Science*.

"The rate of acute rejection within one year after a transplant has decreased significantly, but many people who get an organ transplant are likely to need a second one in their lifetime due to [chronic rejection](#)," said Fadi Lakkis, M.D., who holds the

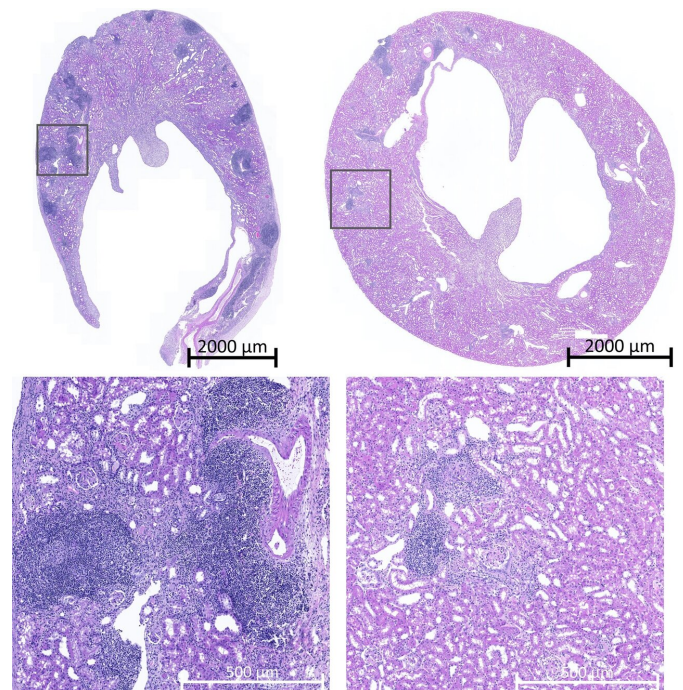


Image of transplanted mouse kidney tissues showing recipient immune cells (blue) in normal (left) but not genetically modified mice (right). Credit: Image adapted from Dai H et al., *Science* (2020)

molecules, *Science* (2020). DOI: [10.1126/science.aax4040](https://doi.org/10.1126/science.aax4040)

Provided by University of Pittsburgh

In the new study, Lakkis, along with co-senior authors Martin Oberbarnscheidt, M.D., Ph.D., assistant professor of surgery at Pitt, and Xian Li, M.D., Ph.D., director of the Immunobiology & Transplant Science Center at Houston Methodist Hospital, used a genetically modified mouse [organ transplant](#) model to show that the innate immune cells, once exposed to a foreign tissue, could remember and initiate an [immune response](#) if exposed to that foreign tissue in the future.

"Innate immune cells, such as monocytes and macrophages, have never been thought to have memory," said Oberbarnscheidt. "We found that their capacity to remember foreign tissues is as specific as adaptive immune cells, such as T- cells, which is incredible."

The researchers then used molecular and genetic analyses to show that a molecule called paired Ig-like receptor-A (PIR-A) was required for this recognition and memory feature of the innate immune [cells](#) in the hosts. When PIR-A was either blocked with a synthetically engineered protein or genetically removed from the host animal, the memory response was eliminated, allowing transplanted tissues to survive for much longer.

"Knowing exactly how the innate immune system plays a role opens the door to developing very specific drugs, which allows us to move away from broadly immunosuppressive drugs that have significant side effects," said Lakkis.

The finding has implications beyond transplantation, according to Oberbarnscheidt. "A broad range of diseases, including cancer and autoimmune conditions, could benefit from this insight. It changes the way we think about the [innate immune system](#)."

**More information:** Hehua Dai et al, PIRs mediate innate myeloid cell memory to nonself MHC

APA citation: Immune system discovery could end chronic organ rejection (2020, May 8) retrieved 29 May 2022 from <https://medicalxpress.com/news/2020-05-immune-discovery-chronic.html>

*This document is subject to copyright. Apart from any fair dealing for the purpose of private study or research, no part may be reproduced without the written permission. The content is provided for information purposes only.*