

# Coronavirus SARS-CoV-2 infects cells of the intestine

1 May 2020

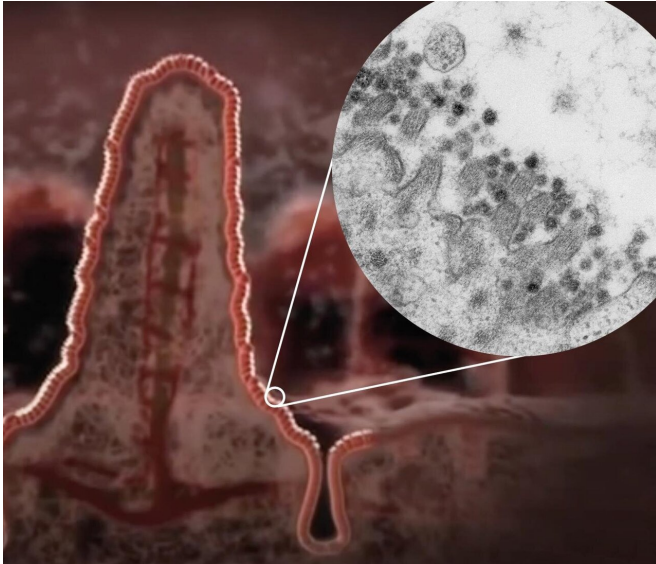


Illustration of a villus in the intestine with a zoom-in to an electron microscopy image of coronavirus SARS-CoV-2 (dark circles) at the edge of an intestinal cell. Credit: Kèvin Knoops, Raimond Ravelli and Maaïke de Backer, copyright: Maastricht University

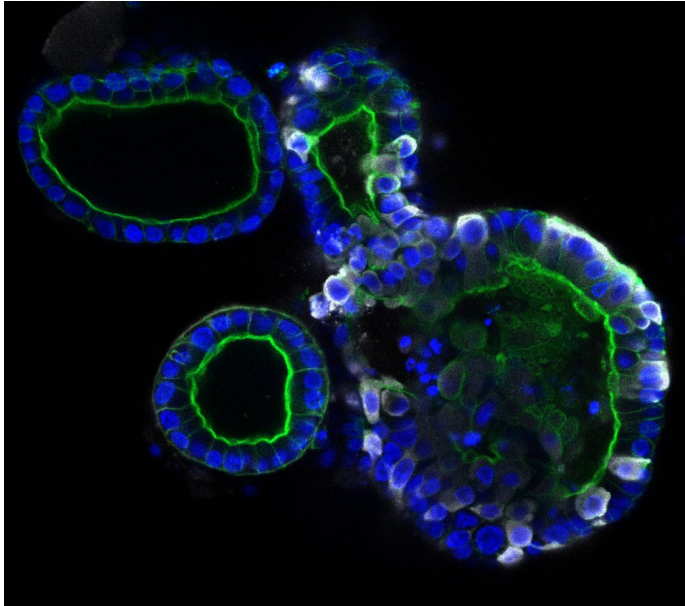
Researchers from the Hubrecht Institute in Utrecht, Erasmus MC University Medical Center Rotterdam, and Maastricht University in the Netherlands have found that the coronavirus SARS-CoV-2, which causes COVID-19, can infect cells of the intestine and multiply there. Using state-of-the-art cell culture models of the human intestine, the researchers have successfully propagated the virus in vitro, and monitored the response of the cells to the virus, providing a new cell culture model for the study of COVID-19. These findings could explain the observation that approximately one third of COVID-19 patients experience gastrointestinal symptoms such as diarrhea, and the fact that the virus often can be detected in stool samples. The results of this study were published in the scientific journal *Science* on the 1st of May 2020.

Patients with COVID-19 show a variety of symptoms associated with respiratory organs—such as coughing, sneezing, shortness of breath, and fever—and the disease is transmitted via tiny droplets that are spread mainly through coughing and sneezing. One third of the patients however also have [gastrointestinal symptoms](#), such as nausea and diarrhea. In addition, the virus can be detected in human stool long after the respiratory symptoms have been resolved. This suggests that the virus can also spread via so-called "fecal-oral transmission."

Though the respiratory and gastrointestinal organs may seem very different, there are some key similarities. A particularly interesting similarity is the presence of the ACE2 receptor, the receptor through which the COVID-19 causing SARS-CoV-2 virus can enter the [cells](#). The inside of the intestine is loaded with ACE2 receptors. However, until now it was unknown whether intestinal cells could actually get infected and produce virus particles.

## Intestinal organoids

Researchers from the Hubrecht Institute, Erasmus MC and Maastricht University set out to determine whether the SARS-CoV-2 virus can directly infect the cells of the intestine, and if so, whether it can replicate there as well. They used human intestinal organoids: tiny versions of the human intestine that can be grown in the lab. Hans Clevers (Hubrecht Institute) states: "These organoids contain the cells of the human intestinal lining, making them a compelling model to investigate infection by SARS-CoV-2."



Intestinal organoids, the right one infected with coronavirus SARS-CoV-2. The coronavirus is colored white, the organoids themselves are colored blue and green. Credit: Joep Beumer, copyright Hubrecht Institute

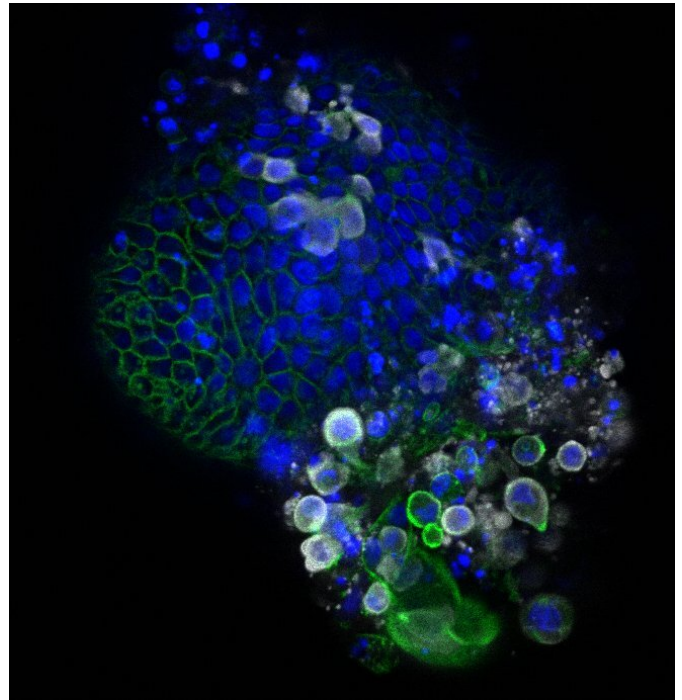
### Infection of intestinal cells

When the researchers added the virus to the organoids, they were rapidly infected. The virus enters a subset of the cells in the intestinal organoids, and the number of cells that are infected increases over time. Using [electron microscopy](#), an advanced way to visualize different components of the cell in great detail, the researchers found virus particles inside and outside the cells of the organoids. Peter Peters (Maastricht University) says: "Due to the lockdown, we all studied virtual slides of the infected organoids remotely from home."

The researchers investigated the response of the [intestinal cells](#) to the virus with RNA sequencing, a method to study which genes are active in the cells. This revealed that so-called interferon stimulated genes are activated. These genes are known to combat viral infection. Future work will focus on these genes more carefully, and on how they could be used to develop new treatments.

The researchers also cultured the organoids in

different conditions that result in cells with higher and lower levels of the ACE2 receptor, through which SARS-CoV-2 can enter the cells. To their surprise, they found that the virus infected cells with both high and low levels of the ACE2 receptor. Ultimately, these studies may lead to new ways to block the entry of the virus into our cells.



Intestinal organoid infected with coronavirus SARS-CoV-2. The coronavirus is colored white, the organoids themselves are colored blue and green. Credit: Joep Beumer, copyright: Hubrecht Institute

### Implications

Bart Haagmans (Erasmus MC) concludes: "The observations made in this study provide definite proof that SARS-CoV-2 can multiply in cells of the gastrointestinal tract. However, we don't yet know whether SARS-CoV-2, present in the intestines of COVID-19 patients, plays a significant role in transmission. Our findings indicate that we should look into this possibility more closely." The current study is in line with other recent studies that identified gastrointestinal symptoms in a large fraction of COVID-19 patients and [virus](#) in the stool

of patients free of respiratory symptoms. Special attention may be needed for those patients with gastrointestinal symptoms. More extensive testing using not only nose and throat swabs, but also rectal swabs or stool samples may thus be needed.

In the meantime, the researchers are continuing their collaboration to learn more about COVID-19. They are studying the differences between infections in the lung and the intestine by comparing lung and intestinal organoids infected with SARS-CoV-2.

**More information:** Mart M. Lamers et al. SARS-CoV-2 productively infects human gut enterocytes. *Science* 01 May 2020. DOI: [10.1126/science.abc1669](https://doi.org/10.1126/science.abc1669)

Provided by Hubrecht Institute

APA citation: Coronavirus SARS-CoV-2 infects cells of the intestine (2020, May 1) retrieved 6 July 2022 from <https://medicalxpress.com/news/2020-05-coronavirus-sars-cov-infects-cells-intestine.html>

*This document is subject to copyright. Apart from any fair dealing for the purpose of private study or research, no part may be reproduced without the written permission. The content is provided for information purposes only.*