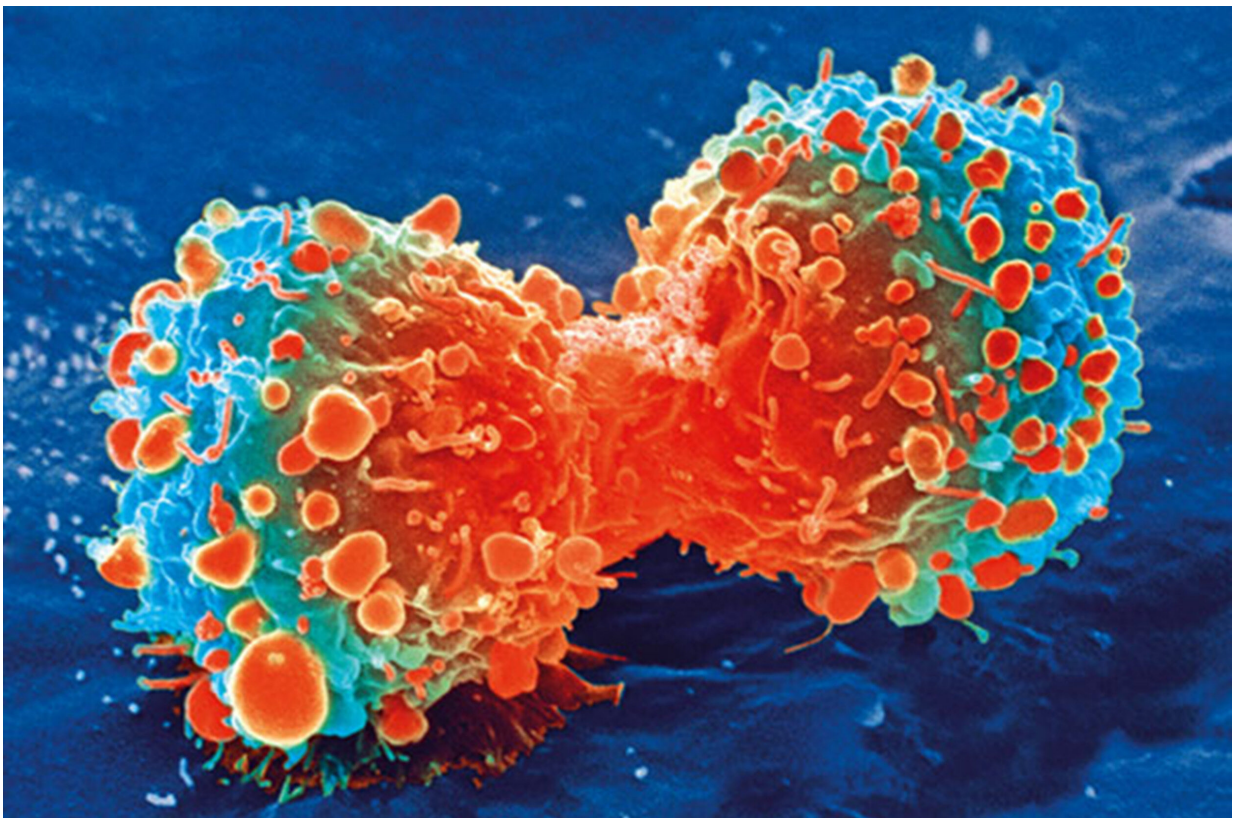


Cancer patients over 65, on multiple medicines, are at higher risk of hospitalization

March 20 2020



Cancer cell during cell division. Credit: National Institutes of Health

As adults age, they accumulate a number of medications for chronic conditions. Older patients take anywhere between 5-15 medications per

year, which increases the risk that some of the drugs will counteract each other. Older patients also make up the majority of cancer patients, and the majority of cancer deaths. What happens when cancer therapy is added onto an already full plate of medications?

In the largest retrospective population-based study to date, Jefferson researchers showed that hospitalization increase by as much as 114% in patients battling breast, prostate, and lung cancers, when those patients took 15 or more medications prior to chemotherapy treatment. "The comprehensive real-world data we looked at gives us a sense of what's happening today, and offers clues on how we could reduce hospitalizations in older [cancer](#) patients," says senior author Grace Lu-Yao, Ph.D., associate director of Population Science at the Sidney Kimmel Cancer Center (SKCC)—Jefferson Health.

The study was published in the *Journal of Geriatric Oncology* on March 19th.

"The [older patients](#) get, typically the more complex their care becomes—this is especially true when cancer treatment is combined with pre-existing conditions," says co-author Andrew Chapman, DO, co-director of the Senior Adult Oncology Center and chief of Cancer Services at the SKCC.

The researchers identified a pool of 13,959 patients with prostate, lung, and breast cancer from a national database of Medicare cancer patients. They grouped patients by the number of medicines they were on for the 6-months prior to starting intravenous chemotherapy for their cancer. "By looking at hospitalization rates in the 6-months leading up to the start of chemotherapy, we were able to get a baseline, or 'before' data point for these patients, that we could compare against the rates of hospitalization after chemo," said Dr. Lu-Yao.

Drug-drug interactions—where one drug can reduce the effectiveness of another and cause dangerous accumulations of another drug or other effects—are nearly a certainty when people take over eight medicines at once. The researchers saw that the cancer patients studied were starting at a high number of medications already. Lung cancer patients were taking a median of 11 medications, prostate cancer patients were at 10, and those with breast cancer were on a median of 6 therapies.

"Polypharmacy, defined as patients taking 5 or more medications, is a serious problem in patients," says Ginah Nightingale, PharmD, an associate professor in the College of Pharmacy at Thomas Jefferson University, who is an emerging leader in the field of geriatric polypharmacy. "Older patients see multiple specialists, and those specialists rarely coordinate with each other to ensure that the medications are absolutely essential, or weighed against a patient's priorities. So patients end up accumulating more than they absolutely need to take."

The researchers found that lung cancer patients taking between 5-9 medications had a 42% higher rate of hospitalization, those taking 10-14 medications had a 75% increase, and those taking over 15 medications prior to chemotherapy had a 114% higher rate compared to patients taking fewer than five medicines. The researchers saw similar increases in both breast and prostate cancer patients as well.

"The question is whether we can work with patients and their multiple healthcare providers to de-prescribe medicines that might no longer be essential and may interfere with their cancer care," says Dr. Nightingale. "We are in the process of designing a randomized study to test whether we can improve cancer-patient outcomes by reducing the number of medications in the older population of patients."

More information: Grace Lu-Yao et al, Relationship between

polypharmacy and inpatient hospitalization among older adults with cancer treated with intravenous chemotherapy, *Journal of Geriatric Oncology* (2020). [DOI: 10.1016/j.jgo.2020.03.001](https://doi.org/10.1016/j.jgo.2020.03.001)

Provided by Thomas Jefferson University

Citation: Cancer patients over 65, on multiple medicines, are at higher risk of hospitalization (2020, March 20) retrieved 18 July 2023 from <https://medicalxpress.com/news/2020-03-cancer-patients-multiple-medicines-higher.html>

This document is subject to copyright. Apart from any fair dealing for the purpose of private study or research, no part may be reproduced without the written permission. The content is provided for information purposes only.