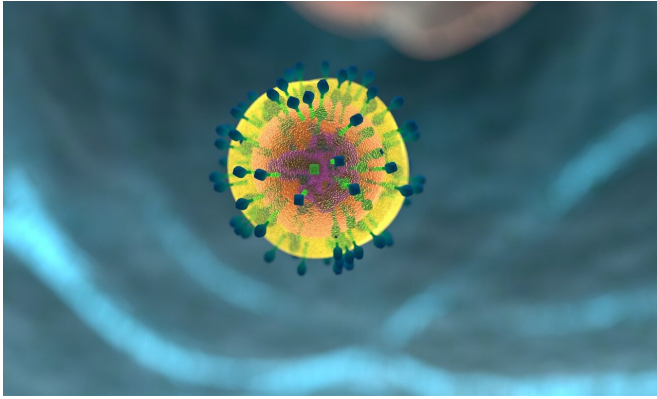


Scientists discover new 'Jekyll and Hyde' immune cell

27 February 2020



Credit: CC0 Public Domain

Scientists at Trinity College Dublin have identified a rare, new cell in the immune system with "Jekyll and Hyde properties". These cells play a key protective role in immunity to infection but—if unregulated—also mediate tissue damage in autoimmune disorders.

The findings should help us design more effective vaccines to prevent infections such as MRSA, and may also assist help us develop of new therapies for [autoimmune diseases](#), such as multiple sclerosis or [rheumatoid arthritis](#).

The research was funded by Science Foundation Ireland and led by Kingston Mills, Professor of Experimental Immunology, and Dr. Sarah Edwards and Dr. Caroline Sutton, Postdoctoral Fellows in the School of Biochemistry and Immunology in the Trinity Biomedical Sciences Institute. Their findings were published today in the *Journal of Experimental Medicine*.

The [immune system](#) functions to control [infection](#), utilising various immune [cells](#), such as T cells to respond to and control invading microbes. However, if these immune cells are not highly

regulated, they can attack and damage body tissues, leading to the development of autoimmune diseases.

Molecules called T cell receptors (TCRs) allow T cells to recognise components of infectious agents with exquisite specificity. The TCRs enable T cells to respond to and eventually eliminate the infectious agent.

Professor Kingston Mills said:

"Until now scientists thought that there were two discrete populations of T cells, expressing either '??' or '??' TCRs. The ??s are the most common T cells in the body. They play a key role in remembering prior infection or immunisation and thereby help protect us against re-infection and mediate vaccine-induced protective immunity. The ??s are more prevalent at mucosal surfaces, such as the lung or gut, and provide an immediate first line of defence against pathogens that invade through these routes."

"We have discovered a new cell type that expresses both ?? and ?? TCRs. This rare population of chimeric or hybrid ??-?? T cells has properties of both ?? and ?? T cells. Importantly, they are normally highly activated and poised to act as first responders to control bacterial infection. However, given this high level of activation, they are effectively 'Jekyll and Hyde cells' because in certain contexts they can also precipitate autoimmune responses."

Using a model of *Staphylococcus aureus* infection, Professor Mills and his team found that these cells are rapidly mobilised during infection and play a key role in quickly eliminating the microbes from the body.

The induction of these hybrid ??-?? T cells may thus represent a novel approach in the design of more effective vaccines against *Staph aureus* and

other infectious diseases, while advancing our ability to control their response may yield additional therapeutic options.

Professor Mills added:

"In a model of autoimmune disease, we found that the hybrid T cells can also trigger the inflammatory cascade that mediates tissue damage in autoimmunity. Therefore, approaches for inhibiting these highly activated [immune cells](#) in susceptible individuals may open up new approaches for the treatment of autoimmune diseases such as psoriasis and multiple sclerosis."

Provided by Trinity College Dublin

APA citation: Scientists discover new 'Jekyll and Hyde' immune cell (2020, February 27) retrieved 2 November 2022 from <https://medicalxpress.com/news/2020-02-scientists-jekyll-hyde-immune-cell.html>

This document is subject to copyright. Apart from any fair dealing for the purpose of private study or research, no part may be reproduced without the written permission. The content is provided for information purposes only.