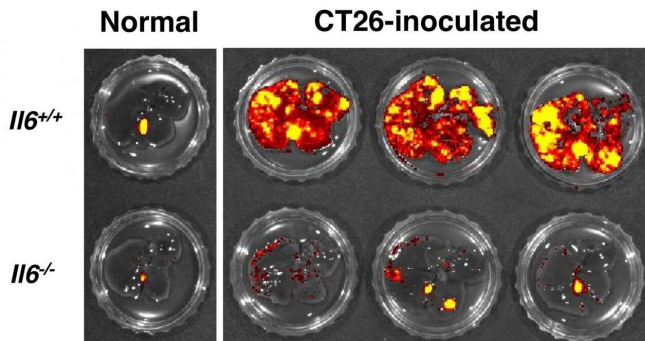


Colorectal cancer partner-in-crime identified

20 February 2020



Tumorigenesis of colorectal cancer cells (CT26, red) were significantly reduced in mice liver tissue lacking IL-6 (IL6^{-/-}), suggesting IL-6's supportive function on metastasis. Credit: Toyoshima Y. et al., *Cancer Immunology Research*. December 1, 2019

A protein that helps colorectal cancer cells spread to other parts of the body could be an effective treatment target.

Colorectal [cancer](#) patients with an [immune system](#)-regulating protein called interleukin 6 (IL-6) are more likely to have recurring tumors that can also spread to the [liver](#), according to research published in the journal *Cancer Immunology Research*. The Hokkaido University investigations into the protein's role in liver metastasis could help improve colorectal cancer treatment options.

Colorectal cancer is the second most common cancer in women and third most common in men. The spreading of this cancer to other organs, most often to the liver, significantly reduces patient survival.

One cancer treatment approach is [immune therapy](#), which stimulates a person's own immune system to attack tumor sites. However, its effectiveness varies with different cancers and in different people. This suggests that several different mechanisms are working at the same time to

suppress the immune systems of those with cancer. Scientists are seeking ways to improve the effectiveness of immune therapy for patients.

Immunologist Hidemitsu Kitamura and colleagues at Japan's Hokkaido University had previously found IL-6 expression plays a role in suppressing immune response in tumor tissues. They wanted to see if it also helps spread colorectal cancer to the liver.

To do this, they used two groups of mice, one in which IL-6 expression was turned off and the other with IL-6 expression turned on. Both groups were inoculated with colorectal cancer [cells](#). They assessed cancer levels in the liver, as well as the effects of IL-6 on different types of immune cells. They also analyzed IL-6 expression in human colorectal cancer patients.

They found that IL-6 expression had a significant effect on the spread of colorectal cancer to the liver in both mice and humans by helping suppress certain anti-tumor immune functions. In contrast, when IL-6 expression was lacking, the roles of anti-tumor immune cells, like dendritic cells and cytotoxic T cells, were enhanced. A [drug administration](#) targeting immune suppressing protein PD-L1 showed to be more effective in mice lacking IL-6 expression. Furthermore, statistical analyses showed human colorectal cancer patients whose [tumor](#) tissues do not express IL-6 survived for longer than those whose tumors did express the protein.

"We hope that targeting IL-6 will be an effective approach to reduce the spread of cancer and improve survival in colorectal cancer patients. This approach could be combined with other immune therapy strategies, such as the one targeting PD-L1, to augment their effects on [colorectal cancer](#) in the future," says Hidemitsu Kitamura.

More information: Yujiro Toyoshima et al, IL6 Modulates the Immune Status of the Tumor Microenvironment to Facilitate Metastatic

Colonization of Colorectal Cancer Cells, *Cancer Immunology Research* (2019). DOI: [10.1158/2326-6066.CIR-18-0766](https://doi.org/10.1158/2326-6066.CIR-18-0766)

Provided by Hokkaido University

APA citation: Colorectal cancer partner-in-crime identified (2020, February 20) retrieved 26 May 2021 from <https://medicalxpress.com/news/2020-02-colorectal-cancer-partner-in-crime.html>

This document is subject to copyright. Apart from any fair dealing for the purpose of private study or research, no part may be reproduced without the written permission. The content is provided for information purposes only.