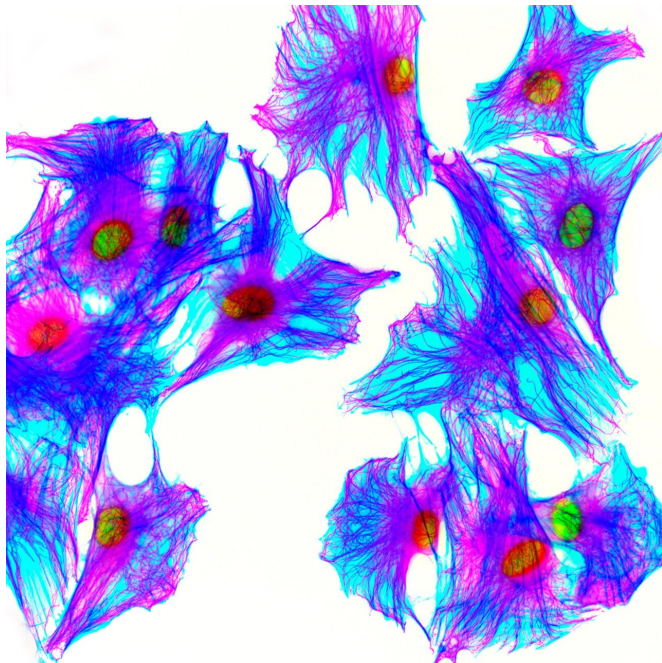


Low doses of radiation used in medical imaging lead to mutations in cell cultures

16 January 2020



HeLa cells. HeLa cells are an immortal human cancer cell line derived from a cancerous tumor of Henrietta Lacks. These cells have unique properties that allow them to continually grow outside the body and have been used to derive many cell lines for cell culture experiments. This image has been produced by fluorescently staining the cells with Alexafluor 488 to detect alpha tubulin, TRITC phalloidin marks actin in the cells cytoskeleton and DAPI marks the cell nucleus. The image has been inverted and adjusted using imaging software. Credit: Kevin Mackenzie, University of Aberdeen, Wellcome Collection

Common medical imaging procedures use low doses of radiation that are believed to be safe. A new study, however, finds that in human cell cultures, these doses create breaks that allow extra bits of DNA to integrate into the chromosome. Roland Kanaar and Alex Zelensky of Erasmus University Medical Center and Oncode Institute and colleagues report these new findings in a study published 16th January in *PLOS*

Genetics.

Scientists have long known that exposing cells to high doses of ionizing radiation generates mutations by creating double-strand breaks that let in external segments of DNA. These extraneous fragments of DNA can occur in the nucleus, left over from natural processes, such as genomic DNA repair and viral infections. In the new study, researchers investigated whether low doses of ionizing radiation have damaging side effects by irradiating human and mouse cells grown in the lab. When they counted the cells that had taken up foreign DNA, they found that low doses of radiation, in the upper range of common diagnostic procedures, create mutations through inserted DNA even more efficiently than the much larger doses studied previously.

While the new results in cell cultures are potentially concerning, the study's authors stress that translating radiation's effects on lab-grown cell cultures to effects in the body is premature. Future experiments using animal models will be necessary to determine the full effects of low-dose radiation, and whether its use in medical imaging has an impact on patient health. If the same phenomenon does occur inside the body, then doctors may need to take into account levels of extraneous DNA, such those resulting from a long-term viral infection, when assessing a patient's risk from a procedure that requires radiation.

"Most molecular radiobiological research is focused on high doses of ionizing radiation relevant to cancer treatment, while effects of physiologically relevant doses of radiation on the cell are notoriously difficult to study at the molecular level," said author Roland Kanaar. "Our discovery that mutagenic insertion of foreign DNA into cell's genome is remarkably responsive to doses encountered during diagnostic, rather than therapeutic, procedures provides a new simple and sensitive tool to study their consequences and

revealed surprising molecular genetic details of how cells cope with natural amounts of DNA damage."

More information: Alex N. Zelensky et al. Low dose ionizing radiation strongly stimulates insertional mutagenesis in a γ H2AX dependent manner, *PLOS Genetics* (2020). DOI: [10.1371/journal.pgen.1008550](https://doi.org/10.1371/journal.pgen.1008550)

Provided by Public Library of Science

APA citation: Low doses of radiation used in medical imaging lead to mutations in cell cultures (2020, January 16) retrieved 13 August 2022 from <https://medicalxpress.com/news/2020-01-doses-medical-imaging-mutations-cell.html>

This document is subject to copyright. Apart from any fair dealing for the purpose of private study or research, no part may be reproduced without the written permission. The content is provided for information purposes only.