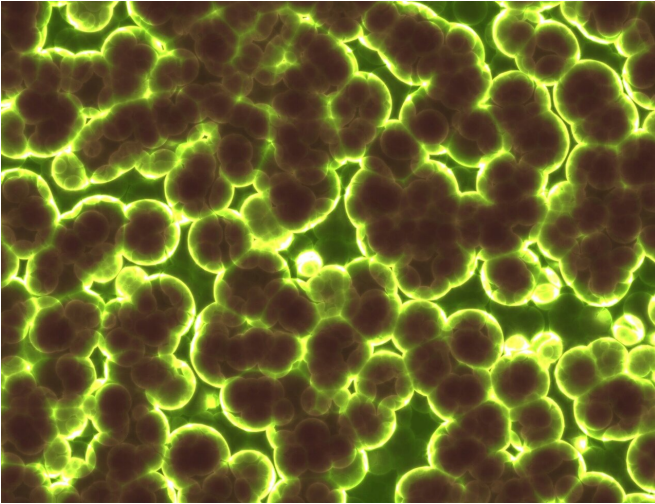


# Phase 1 clinical trials for psilocybin show no adverse effects

13 December 2019, by Bob Yirka



Credit: CC0 Public Domain

A team of researchers from King's College London and mental healthcare company Compass Pathways has released the results of a Phase 1 clinical trial for the drug psilocybin. In addition to announcing the results at the [annual meeting](#) of the American College of Neuropsychopharmacology, team members also spoke with the press. They [reported](#) that thus far, they have found no adverse effects in volunteers who were given the drug.

Psilocybin is the [active ingredient](#) in magic mushrooms—it is a psychedelic [drug](#), which means consuming it induces hallucinogenic symptoms. In recent years, mental health researchers have been investigating the possibility of using it to treat chronic depression. In most cases, proscribing psilocybin would be a treatment of last resort for patients who have not responded to any other type of treatment.

The Phase 1 trial was meant to test the safety of the drug only—no attempt was made to find out if it

reduced depression symptoms. None of the volunteers suffered from depression. The double-blind trial consisted of giving 89 healthy volunteers a 10- or 25-mg dose of the drug (or a placebo) and following up with therapy sessions. Each of the volunteers was assessed for adverse effects for up to 12 weeks. The therapy sessions were carried out with different numbers of volunteers participating, from one person to six.

The researchers wanted to know if treating patients in groups versus one-on-one might make a difference in the outcome. They noted that each [volunteer](#) was assigned to a therapist, who attended the therapy sessions with the volunteers. Representatives for Compass told the press that they are interested in learning if it might be possible to streamline the treatment procedure to speed up the clinical trial process. They also reported that 25 dosing sessions were carried out altogether during the trial.

The researchers reported that there have been no serious adverse effects in any of the volunteers. Minor adverse effects were of a psychedelic nature. They also found that volunteers experienced no cognitive functioning or emotional adverse effects. And they concluded by suggesting their findings show the feasibility of using psilocybin as a drug to treat chronic depression in conjunction with [therapy sessions](#). Representatives from King's College noted that theirs was the largest study of psilocybin to date, and described the results as promising.

© 2019 Science X Network

APA citation: Phase 1 clinical trials for psilocybin show no adverse effects (2019, December 13)  
retrieved 31 May 2022 from <https://medicalxpress.com/news/2019-12-phase-clinical-trials-psilocybin-adverse.html>

*This document is subject to copyright. Apart from any fair dealing for the purpose of private study or research, no part may be reproduced without the written permission. The content is provided for information purposes only.*