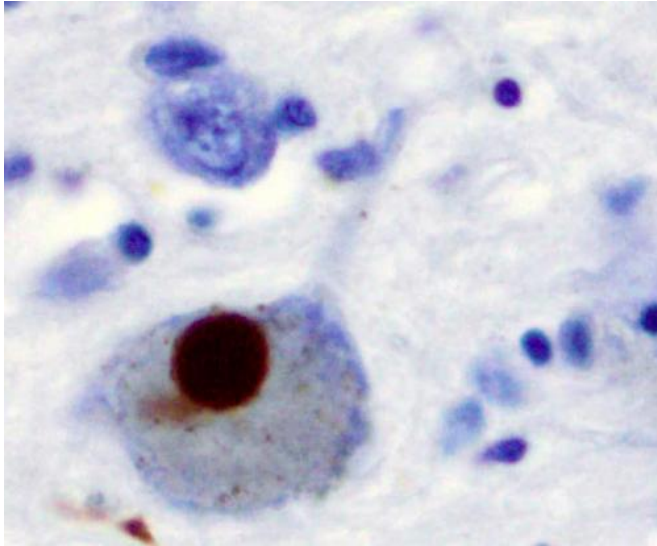


Defining a new approach to treating Parkinson's disease

12 November 2019



Immunohistochemistry for alpha-synuclein showing positive staining (brown) of an intraneuronal Lewy-body in the Substantia nigra in Parkinson's disease. Credit: Wikipedia

An international research team including scientists from the University of Cologne have identified a new mechanism for the development of Parkinson's disease, which could prove to be the starting point for the development of a more targeted therapy. The results of the study "Cav2.3 channels contribute to dopaminergic neuron loss in a model of Parkinson's disease" have been published in *Nature Communications*.

Parkinson's disease is a neurodegenerative disease in which a specific population of dopamine-producing nerve cells in the midbrain die off selectively. The resulting lack of dopamine then leads to symptoms such as resting tremors, muscle stiffness and problems executing voluntary movements.

Parkinson's disease is the second most common

neurodegenerative disease, affecting more than six million people worldwide. The development of Parkinson's disease is strongly age-dependent, but in many respects still not understood. Especially because many different causes—from genetic disposition and environmental factors to drug use—can contribute to its development. A causal therapy is not yet available. Therefore, there are strong efforts worldwide to better understand the molecular mechanisms of this disease.

It has been known for some that at the [cellular level](#), disturbances in calcium-dependent signalling pathways play an important role in the development of Parkinson's disease, or are associated with it. Calcium plays a key role in many cellular signalling pathways, and its concentration is therefore regulated very precisely in the cell.

Deregulation of the calcium balance causes disturbances of the intracellular signalling cascades, which can lead to cell death. The international research team has now shown that excessive calcium influx through specific ion channels, Cav2.3 channels of the so-called R-type, can contribute significantly to the development of Parkinson's disease.

In a mouse model for Parkinson's disease, the researchers were able to prevent the death of dopamine-producing [nerve cells](#) by genetically switching off the activity of the Cav2.3 channels. The ion channel Cav2.3 has so far not been associated with Parkinson's disease. Further research on dopamine-producing neurons, which have developed from human so-called induced [pluripotent stem cells](#), shows that signalling cascades similar to those that cause Parkinson's sensitivity in the animal models are also active in human neurons.

Previously, scientists hypothesized that another calcium channel, Cav1.3 (an L-type calcium [channel](#)), plays a central role in the development of

Parkinson's disease. However, a recently completed clinical trial in which Cav1.3 channels were blocked did not show protection against Parkinson's disease. The new study provides evidence as to why this clinical trial failed to show protective effects and suggests that selective Cav2.3 inhibitors should be tested as a drug to treat Parkinson's [disease](#).

More information: Julia Benkert et al, Cav2.3 channels contribute to dopaminergic neuron loss in a model of Parkinson's disease, *Nature Communications* (2019). [DOI: 10.1038/s41467-019-12834-x](#)

Provided by University of Cologne

APA citation: Defining a new approach to treating Parkinson's disease (2019, November 12) retrieved 31 August 2022 from <https://medicalxpress.com/news/2019-11-approach-parkinson-disease.html>

This document is subject to copyright. Apart from any fair dealing for the purpose of private study or research, no part may be reproduced without the written permission. The content is provided for information purposes only.