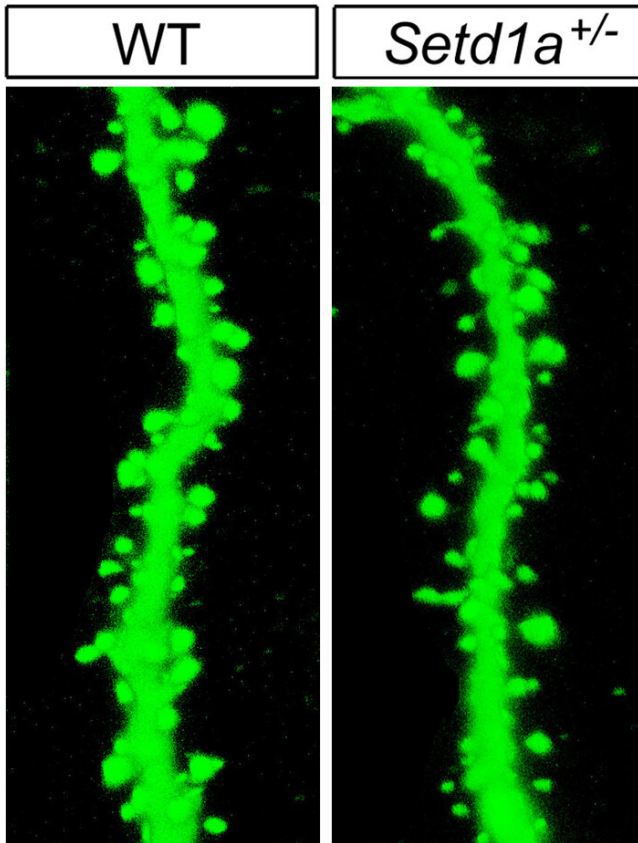


Schizophrenia risk gene linked to cognitive deficits in mice

24 October 2019



Mutant mice with impaired function of the SETD1A gene showed abnormalities in the neuronal machinery by which brain cells communicate. For example, there were fewer-than-normal spines (right), needed to relay signals, on branches of neurons -- compared to those in wild type mice (left). Credit: Jun Mukai/Gogos Lab/Columbia's Zuckerman Institute

Researchers have discovered in mice how one of the few genes definitively linked to schizophrenia, called SETD1A, likely confers risk for the illness. Mice genetically engineered to lack a functioning version of the enzyme-coding gene showed abnormalities in working memory, mimicking those commonly seen in schizophrenia patients. Restoring the gene's function corrected the

working memory deficit. Counteracting the gene's deficiencies also repaired neuronal circuit deficits in adult mice—suggesting clues for potential treatment strategies. A team of scientists led by Joseph Gogos, M.D., Ph.D., of Columbia University, New York City, reported on their research—supported by the National Institutes of Health—in *Neuron*.

"You could call SETD1A a master regulator," explained David Panchision Ph.D., of the NIH's National Institute of Mental Health (NIMH), which co-funded the study. "This schizophrenia risk gene codes for an enzyme that influences the expression of many other [genes](#). In [mice](#), a hobbled version of SETD1A disrupted [gene expression](#) in a network harboring other genomic suspects in schizophrenia. Remarkably, the resulting abnormalities were reversible."

Researchers have identified both common and rare genetic variations that contribute to risk for schizophrenia. Mutant SETD1A is one of just a few rare genes known to unequivocally confer risk for schizophrenia. While common genetic variations linked to schizophrenia individually exert only tiny effects on risk, having just one mutant copy of SETD1A is sufficient to confer a large increase in disease risk. SETD1A plays a key role in epigenomic regulation—the switching on-and-off of genes in response to experience—a molecular process widespread in the brain. Mutations in SETD1A have primarily been found in people with schizophrenia, suggesting that this rare gene variation might hold important clues to the underlying disease process.

To find out how such a mutation in SETD1A affects brain cells, circuits, and behavior, Gogos and colleagues modeled the effects in mice carrying a mutation that halves the gene's expression.

The genetically-altered mice faltered on tasks requiring navigation of a maze to receive a reward. The tasks test the animals' working

memory—holding information in mind and retrieving it to guide behavior—an ability often impaired in schizophrenia.

More information: Jun Mukai et al, Recapitulation and Reversal of Schizophrenia-Related Phenotypes in Setd1a-Deficient Mice, *Neuron* (2019). [DOI: 10.1016/j.neuron.2019.09.014](https://doi.org/10.1016/j.neuron.2019.09.014)

The mutated gene also disrupted the cellular machinery by which neurons communicate with each other. For example, it stunted the growth and branching of cell extensions and reduced the number of spines on these extensions, which are needed to relay chemical signals from neighboring cells into electrical impulses.

Provided by National Institutes of Health

Underlying such impaired neuronal growth and function, the researchers discovered that the mutant SETD1A gene disrupted regulation of many other genes with which it is networked. Whole classes of genes were under-expressed while others were over-expressed, depending on their relationship to the gene. One class overlapped conspicuously with genetic variation associated with schizophrenia in key (pyramidal) neurons of the brain's outer mantle, or cortex, with likely cumulative effects on cellular structure and function, suggest the researchers.

Experimentally reinstating normal expression of SETD1A in [adult mice](#) restored the animals' working memory function. Moreover, inhibiting expression of a gene called LSD1, which counteracts SETD1A, corrected all of the animals' behavioral and neuronal communication abnormalities. Evidence indicated that many of these mechanisms identified in mouse brain have been conserved through evolution and likely play similar roles in humans.

Reactivating SETD1A function or counteracting downstream effects of SETD1A deficiency in the adult brain, perhaps with LSD1 inhibitors, may hold promise for treating schizophrenia's cognitive deficits, suggest the researchers.

"Although SETD1A mutations exist in a small percentage of all [schizophrenia patients](#), many people diagnosed with the disorder have issues similar to those caused by this mutation," explained Gogos. "Thus, therapies that are specific to SETD1A may indeed have wider implications for [schizophrenia](#) as a whole."

APA citation: Schizophrenia risk gene linked to cognitive deficits in mice (2019, October 24) retrieved 30 May 2021 from <https://medicalxpress.com/news/2019-10-schizophrenia-gene-linked-cognitive-deficits.html>

This document is subject to copyright. Apart from any fair dealing for the purpose of private study or research, no part may be reproduced without the written permission. The content is provided for information purposes only.