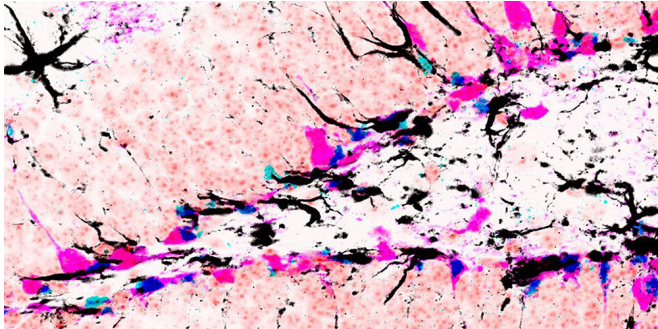


# Signal blocks stem cell division in the geriatric brain

28 August 2019



The image depicts Id4 (blue) and GFAP (black) expression in genetically labeled stem cells and their progeny (magenta) in the hippocampus of the mouse brain. The image presents an artistic coloration of the spatial and molecular factors in a niche. Credit: University of Basel

Scientists from Basel have investigated the activity of stem cells in the brain of mice and discovered a key mechanism that controls cell proliferation. According to the researchers, the gene regulator Id4 controls whether stem cells remain in a state of rest or enter cell division. The results were published in *Cell Reports* and may be relevant for treating neurodegenerative disease in human brains.

Whether [stem cells](#) also occur in the [human brain](#) has long been controversial. Today, it is considered certain that the brain can form new neurons throughout life. The stem [cells](#) that have been found to be behind this process are restricted to specialized regions in the brain, so-called niches, which provide key signals that regulate stem cell self-renewal and differentiation. With increasing age, however, the stem cells become increasingly inactive and divide less frequently. They transition into a "quiescent" or dormant state.

## Hyperactive signaling pathway inhibits cell

## division

So far, it was unclear why stem cells in the adult and aged brain fall into a state of rest. A research team led by Prof. Verdon Taylor from the Department of Biomedicine at the University of Basel has now discovered which factors block entry of stem cells into [cell division](#). They were investigating the so-called Notch signaling pathway in more detail, a pathway central for regulating stem cell activity in the brain.

The study shows that the Notch2 signaling pathway controls the expression of a specific transcription regulator called Id4. Once expressed, Id4 inhibits the division of stem cells and blocks the production of new neurons in the hippocampus of the adult brain. Notch2 signaling maintains high levels of Id4 in some [neural stem cells](#), and thereby explains why these stem cells increasingly enter a state of rest in the adult and geriatric brain.

As the brain ages, the Notch2-Id4 pathway enters into a state of hyperactivity, presenting a strong molecular brake that inhibits stem cell activation and neuron production. Conversely, inactivation of this pathway releases the brake and enables the production of new neurons—even in the brain of geriatric mice.

## Reversible resting state

The results show that the stem cells in the mammalian brain are in a reversible resting state regulated by signals and factors in the niche. By manipulating the signaling pathway, the production of new nerve cells can be specifically stimulated.

The study provides [important information](#) on the basic mechanisms of neurogenesis in the adult mouse brain. Since the Notch signaling pathway is widespread and occurs in most organisms, the researchers hope that the findings can also be transferred to humans. In this way, brain damage

caused by degenerative and neuropsychiatric diseases could be repaired in the future.

**More information:** Runrui Zhang et al, Id4 Downstream of Notch2 Maintains Neural Stem Cell Quiescence in the Adult Hippocampus, *Cell Reports* (2019). [DOI: 10.1016/j.celrep.2019.07.014](https://doi.org/10.1016/j.celrep.2019.07.014)

Provided by University of Basel

APA citation: Signal blocks stem cell division in the geriatric brain (2019, August 28) retrieved 21 June 2022 from <https://medicalxpress.com/news/2019-08-blocks-stem-cell-division-geriatric.html>

*This document is subject to copyright. Apart from any fair dealing for the purpose of private study or research, no part may be reproduced without the written permission. The content is provided for information purposes only.*