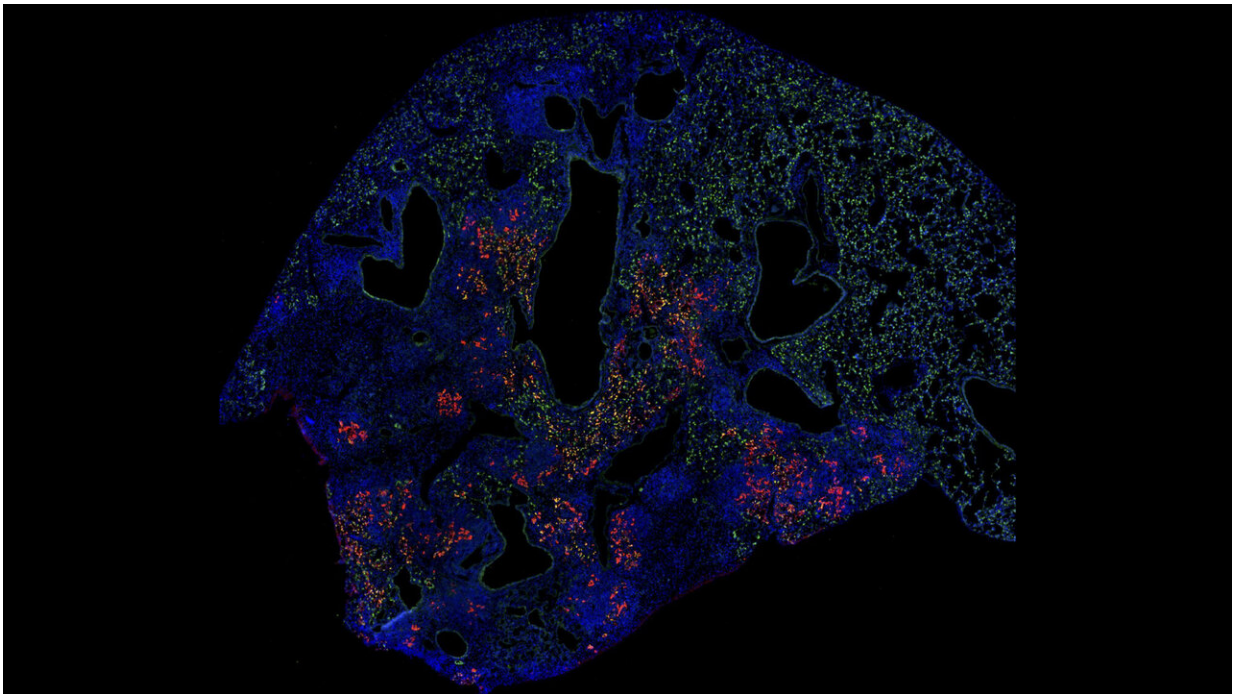


# Lung cell transplant boosts healing after the flu in mice

August 20 2019, by Katherine Unger Baillie

---



Researchers successfully transplanted a special type of lung cell called AT2 cells (labeled in green) from healthy mice into mice that had experienced a severe flu infection. The AT2 cells that engrafted (in red) appear to have helped the animals recover more robustly. Credit: Aaron Weiner/University of Pennsylvania School of Veterinary Medicine

Some cases of the flu are so severe they cause lasting injury to the lungs. New research from the University of Pennsylvania now points to a

strategy that may one day offer protection against this damage.

The scientists found that transplanting a certain type of [lung](#) cell from healthy mice to those that had been injured by an infection with influenza could improve healing. The transplant—achieved by taking specialized [lung cells](#) called alveolar type-two (AT2) [cells](#) from the healthy animals and then allowing the sick animals to simply breathe in the cells—led to improved blood-oxygen levels.

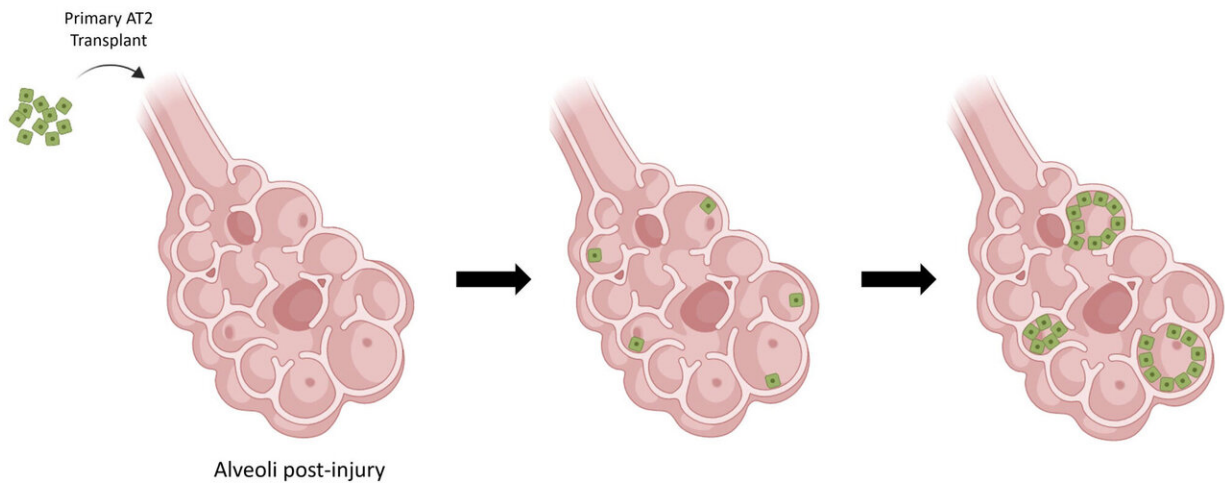
"We took this really simple approach," says Andrew Vaughan, senior author on the paper and an assistant professor in Penn's School of Veterinary Medicine, "and asked if we could supplement back these AT2 cells into injured mice, can we make them better, can we improve lung regeneration?"

"Imagine if this were in humans," adds Aaron Weiner, lead author on the study and a graduate student in Vaughan's lab. "If there were a bad flu season coming up, it could be routine to say, can you take some of my AT2 cells, grow them up for me, and if I get sick you can just put them back in to help me recover. That biobank idea is what we're imagining."

The study appears in the journal *npj Regenerative Medicine*.

Earlier work by Vaughan and colleagues had focused on the negative outcomes that can arise following injury to the lung, such as a serious infection. In the current investigation, they attempted to recreate a healthy recovery in mice that had been infected with the flu. The [healing process](#) involves AT2 cells, which normally produce surfactant, a substance that lowers surface tension in the lung's alveoli to ensure proper function. But AT2 cells can also take on a stem cell-like activity, able to both self-renew and to give rise to alveolar type 1 (AT1) cells, which are responsible for gas exchange in the lungs.

Weiner, Vaughan, and colleagues decided to try to take advantage of this ability of AT2 cells to see if they could aid healing.



The transplanted AT2 cells were able to proliferate in the injured lung tissue, differentiating in some cases to a different type of cell that contributes to gas exchange. This stem cell-like quality of the AT2 cells allowed for improved healing. Credit: Vaughan lab/School of Veterinary Medicine

They first developed a method to grow AT2 cells taken from healthy mice in culture, and then transplant those cells into mice 11 days after being infected with influenza. Nearly two weeks after the transplant, the researchers found that the cells had grown in the recipient's lungs but either remained as AT2 cells or developed markers associated with unhealthy regeneration.

Trying a different tack, the team took roughly a million AT2 cells

isolated from healthy mice and directly transplanted them to sick ones. This approach had more success.

"Only a few thousand of the cells stick around in the lungs," says Weiner. "But the important thing we show is that two weeks after we transplant these cells, we see these huge engraftments where the AT2 cells have proliferated a ton and differentiated into the oxygen-exchanging AT1 cells."

"If you weren't looking for the fluorescent tag that we put on the transplanted cells, you wouldn't even be able to distinguish them from the normal tissue," Vaughan says.

The transplant also had a physiological benefit, the researchers demonstrated. Mice that got the transplant of primary AT2 cells had significantly higher blood-oxygen saturation than mice that got a "mock" transplant of saline solution, a sign of a stronger recovery.

"These engraftments are very long-lived," Weiner notes. "One hundred days after the [transplant](#), we find engraftments that are really robust and maintain the cell lineage and have presumably helped in some way for the mice to get better."

As a final test of their methods, the team transplanted AT2 cells into [mice](#) that had experience other types of lung injury, including acid inhalation, chemotherapy exposure, and bacterial pneumonia.

"To our surprise it worked really well in two of the three injury models we tested," Vaughan says. They saw robust engraftment after both acid inhalation and chemotherapy, though not for bacterial pneumonia.

**More information:** Aaron I. Weiner et al, Mesenchyme-free expansion and transplantation of adult alveolar progenitor cells: steps

toward cell-based regenerative therapies, *npj Regenerative Medicine* (2019). DOI: [10.1038/s41536-019-0080-9](https://doi.org/10.1038/s41536-019-0080-9)

Provided by University of Pennsylvania

Citation: Lung cell transplant boosts healing after the flu in mice (2019, August 20) retrieved 5 October 2023 from <https://medicalxpress.com/news/2019-08-lung-cell-transplant-boosts-flu.html>

This document is subject to copyright. Apart from any fair dealing for the purpose of private study or research, no part may be reproduced without the written permission. The content is provided for information purposes only.