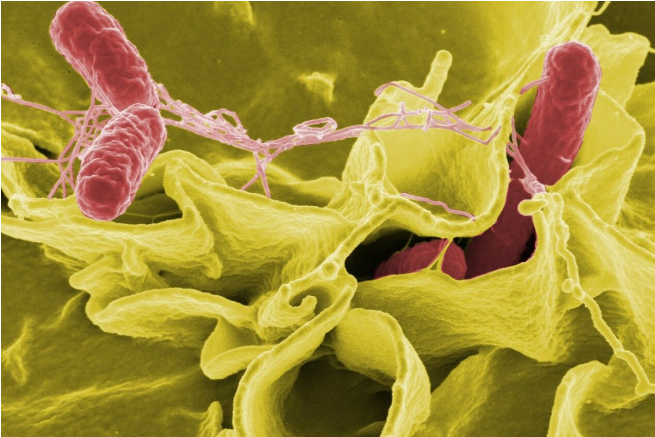


# For salmonella detection, genomic tool emerges as a key

26 July 2019



Credit: CC0 Public Domain

The world's food supply will become safer as the food industry shifts to high-resolution, whole-genome sequencing—which examines the full DNA of a given organism all at once. This move to make sequencing ubiquitous will lead to the consistently reliable detection of salmonella.

A paper published in the journal *Frontiers in Microbiology* on—co-authored by researchers from Cornell University and the Mars Global Food Safety Center (GFSC), Beijing—illuminates breakthroughs.

"Salmonella is the foodborne pathogen with the biggest public health and economic impact globally. It's one of the major causes of diarrhea all around the world," said Martin Wiedmann, [food safety professor](#) and Cornell Institute for Food Systems faculty fellow. "Salmonella can be mild or it can cause death, as its severity depends on [salmonella's](#) serotypes [distinct variations] - and that's what we're trying to find out."

The paper describes how the food industry around the world should use molecular methods more

often for subtyping and characterizing salmonella. The paper compared older subtyping practices—some practices going back to the 1930s—to the newer whole-genome sequencing, a method that can analyze a wider, more complete swath of the genome.

With this technique, scientists can more precisely identify a particular strain of salmonella and determine the origin and the path of the disease's outbreak, Wiedmann said.

For example, in early July the U.S. Food and Drug Administration and the federal Centers for Disease Control and Prevention (CDC) used the technique, as they began investigating a suspected salmonella link between pig-ear dog treats and humans—due to people handling the treats. At the time, there were 45 cases of salmonella in 13 states, with 12 people hospitalized, according to the CDC.

"Whole-genome sequencing is rapidly becoming the method of choice for salmonella subtyping," said microbiologist Silin Tang, the paper's lead author and senior research scientist at the Mars Global Food Safety Center. "Foods often reach the consumer through increasingly complex supply chains, creating many opportunities where food safety could be compromised. Recent cases highlight the need to reinforce salmonella control measures in the food industry, including rapid and accurate tracking of contamination sources with appropriate subtyping tools."

Tang said there is an opportunity for the [food industry](#) to create a talent pipeline of expertise in bioinformatics—the use of software tools to understand biological data—to harness the full potential of [whole-genome sequencing](#) technologies.

Further, Wiedmann said, this paper represents the translation of academic analysis into a useful industry application. "This will help industry

implement better ways to proactively address the complications and complexity of salmonella," he said.

**More information:** Silin Tang et al, Assessment and Comparison of Molecular Subtyping and Characterization Methods for Salmonella, *Frontiers in Microbiology* (2019). [DOI: 10.3389/fmicb.2019.01591](https://doi.org/10.3389/fmicb.2019.01591)

Provided by Cornell University

APA citation: For salmonella detection, genomic tool emerges as a key (2019, July 26) retrieved 25 May 2021 from <https://medicalxpress.com/news/2019-07-salmonella-genomic-tool-emerges-key.html>

*This document is subject to copyright. Apart from any fair dealing for the purpose of private study or research, no part may be reproduced without the written permission. The content is provided for information purposes only.*