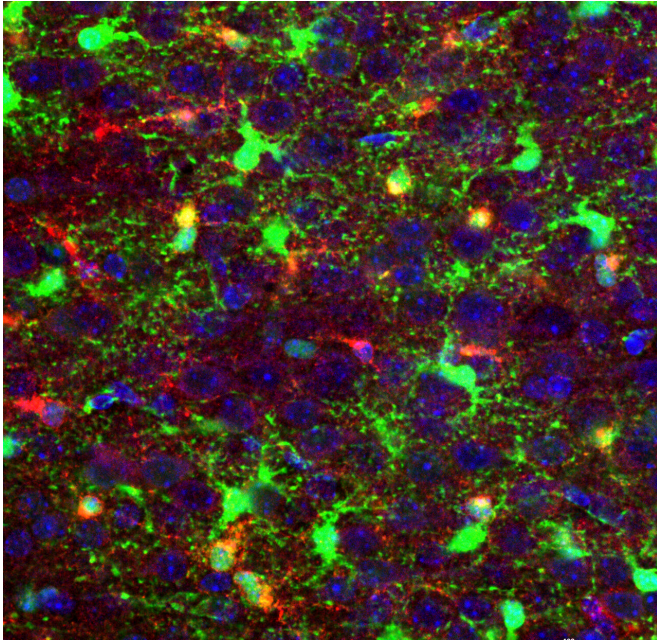


Shutting down deadly pediatric brain cancer at its earliest moments

11 April 2019



This colorful microscopic image helps reveal the presence of genes and proteins in developing mouse glial brain cells. The image augments extensive single-cell analyses scientists used to search for new molecular targets that might be used to treat aggressive and deadly glioblastoma brain cancer at its earliest stages. The research results are reported in the journal *Cell Stem Cell*. Credit: Cincinnati Children's

Cell-by-cell genetic analyses of developing brain tissues in neonatal mice and laboratory models of brain cancer allowed scientists to discover a molecular driver of the highly aggressive, deadly, and treatment-resistant brain cancer, glioblastoma.

Published findings in *Cell Stem Cell* describe how the single-cell analyses identified a subpopulation of cells critical to [glioblastoma](#) formation—the early primitive progenitor cells of oligodendrocyte [brain](#) cells, pri-OPC progenitors, according to Q. Richard Lu, Ph.D., lead investigator and Scientific Director

of the Brain Tumor Center at Cincinnati Children's Hospital Medical Center.

The data suggest that reprogramming of primitive oligodendrocyte progenitors into a stem-like state plays an important role in glioma initiation and progression. The researchers' primary molecular target in the study, a protein called Zfp36l1, launches biological programs that mirror those of healthy early brain development in the mice, but instead help fuel brain cancer growth. The discovery presents an opportunity to find out if new therapeutic approaches can stop glioblastoma at its earliest stages of initial formation or recurrence, Lu said.

Researchers learned that dysregulation of Zfp36l1—a protein that binds together different RNAs—causes neural lineage progenitor cells to grow so rapidly that they take on the properties of fast-growing stem-like cells as they turn cancerous. This was especially true of less-developed primitive oligodendrocyte progenitor cells. The discovery gave researchers an idea.

"When we used small RNA-interfering molecules to inhibit the expression of the Zpf36l1 gene in mouse and human glioma tumor cells, it significantly decreased the rate of glioma cell growth and spread," Lu said. "In mice with glioblastoma tumors, genetic knockout of Zpf36l1 significantly increased survival time for the animals."

Single-Cell Transcriptomics

The researchers used single-cell transcriptomics as a foundation for their study. This allowed them to identify, and compare, all of the RNA molecules in each developing glial brain cell and developing cancerous glioblastoma cell. This included the distinct populations of transitioning oligodendrocyte and astrocyte progenitor cells, particularly the early pri-OPC progenitors that support the rapid growth of glioblastoma.

Researchers said this study is important because prior to the development of new technologies that allow for single-cell analysis, the extremely diverse genetics and types of brain cells that cause high-grade glioblastoma have been hard to nail down.

To determine if their observations in mouse glioma models might apply to tumor formation in human brain tumors, researchers also analyzed single-cell transcriptomics of human tumor cells donated by patients. They found similar populations and genetic signatures in human oligodendrocyte progenitor cells. The cells had regressed to a less-developed mitotic state and assumed the characteristics of fast-growing stem-like brain cells, setting the stage for tumorigenesis.

Preclinical Research Ongoing

The researchers emphasized their data were produced in mice and other laboratory models of brain cancer, so it still remains unknown if the results will translate to patient treatment. The study does provide important clues, however, for battling a cancer that usually is fatal, including in young children, researchers said.

Now that Lu and his colleagues know blocking Zfp3611 function in glioma cells forming from primitive oligodendrocyte progenitor cells inhibits glioblastoma growth in lab models, they are expanding their efforts. They want to find an effective way to therapeutically exploit what they consider to be a potential new vulnerability for a disease that so far has been invincible. This includes future work to develop specific therapeutic agents that might more precisely and effectively target Zfp3611 and the brain [cells](#) it helps turn cancerous.

More information: *Cell Stem Cell* (2019). DOI: [10.1016/j.stem.2019.03.006](https://doi.org/10.1016/j.stem.2019.03.006) , [www.cell.com/cell-stem-cell/fulltext/S0092-9134\(19\)30105-5](http://www.cell.com/cell-stem-cell/fulltext/S0092-9134(19)30105-5)

Provided by Cincinnati Children's Hospital Medical Center

APA citation: Shutting down deadly pediatric brain cancer at its earliest moments (2019, April 11) retrieved 5 September 2022 from <https://medicalxpress.com/news/2019-04-deadly-pediatric-brain-cancer->

[earliest.html](#)

This document is subject to copyright. Apart from any fair dealing for the purpose of private study or research, no part may be reproduced without the written permission. The content is provided for information purposes only.