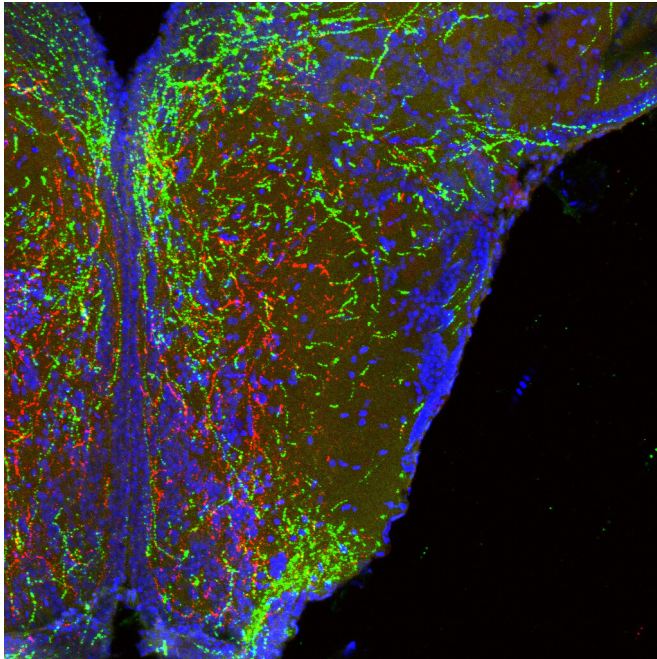


Scientists are piecing together how genes involved in neural development can affect body weight

17 January 2019



Long, wire-like projections of neurons in the hypothalamus that form body weight circuits appear red and green. Cell bodies from one area of the hypothalamus (bottom of image) branch up to another. Note that these cells specifically avoid some areas (appearing dark in the image) to seek proper targets. Credit: Dr. Sebastien Bouret, CHLA

Leading a unique, collaborative research study with scientists across the globe, investigators at the University of Cambridge and Children's Hospital Los Angeles have pinpointed a set of molecules that wire the body weight center of the brain.

In a study published January 17th in the journal *Cell*, Sadaf Farooqi, Ph.D., FRCP, FMedSci, of the University of Cambridge and CHLA's Sebastien Bouret, Ph.D. led research teams to uncover key

genes that guide the process of brain development.

"We know that the brain, in particular an area called the hypothalamus, has a very important role in the regulation of food intake and blood sugar," explains Bouret, who is also an associate professor of pediatrics at the Keck School of Medicine of USC. Researchers have focused on the hypothalamus for years in an effort to study the epidemic of obesity, which affects nearly 14 million children and adolescents in the United States. "What we don't yet understand," he says, "is how these circuits in the hypothalamus are being organized. We want to know how the brain puts itself together and what exactly governs that process." Understanding this is key because circuits must be established properly in order for the brain to ultimately perform complex functions like maintaining proper weight.

Why do certain [brain cells](#) connect to one area while specifically avoiding other, nearby [cells](#)? Bouret's laboratory investigates how this precise wiring is achieved. Understanding how brain cells in the hypothalamus form these specific, complex connections—and how this process can be adversely affected—could provide insight into the development of childhood obesity.

Bouret studied a group of molecules called semaphorins, which are found in abundance in the developing hypothalamus. Brain cells release semaphorins to communicate with other brain cells. These messages act as a sort of road map, guiding cells towards or away from other cells. But what happens to the brain when that road map is no longer functioning properly? Dr. Sophie Croizier, who led the study in Bouret's lab, blocked semaphorin signaling in cells of the hypothalamus. She discovered that brain cells no longer grew the way they were supposed to, showing that semaphorin provides an essential map for them to

follow. In addition to connections failing to establish, loss of semaphorin action in a preclinical model also caused elevated body weight. "What we are seeing is that semaphorins are guiding and shaping development of hypothalamic circuits that ultimately regulate calorie intake," explains Bouret.

But the story does not stop here.

Professor Farooqi from the University of Cambridge was also analyzing genetic information from individuals with obesity. Farooqi's team tested 1,000 DNA samples and found that individuals with early-onset obesity had more rare mutations in genes involved in semaphorin signaling than healthy individuals. The finding that people with obesity have rare mutations in semaphorin signaling shows that semaphorins are important in maintaining healthy body weight. "We have now discovered the genes that establish the precise neural connections that form these circuits," says Dr. Agatha van der Klaauw, who led the study in Farooqi's lab and is co-first author on the paper. "This work provides new insights into the development of hypothalamic circuits that regulate appetite and metabolism."

This multifaceted study reveals a much clearer picture of what occurs in the developing brain. Semaphorin signaling appears to shape the physical architecture of the [brain](#) and influence circuitry governing body weight.

More information: Agatha A. van der Klaauw et al, Human Semaphorin 3 Variants Link Melanocortin Circuit Development and Energy Balance, *Cell* (2019). DOI: [10.1016/j.cell.2018.12.009](https://doi.org/10.1016/j.cell.2018.12.009)

Provided by Children's Hospital Los Angeles

APA citation: Scientists are piecing together how genes involved in neural development can affect body weight (2019, January 17) retrieved 28 July 2022 from <https://medicalxpress.com/news/2019-01-scientists-piecing-genes-involved-neural.html>

This document is subject to copyright. Apart from any fair dealing for the purpose of private study or research, no part may be reproduced without the written permission. The content is provided for information purposes only.