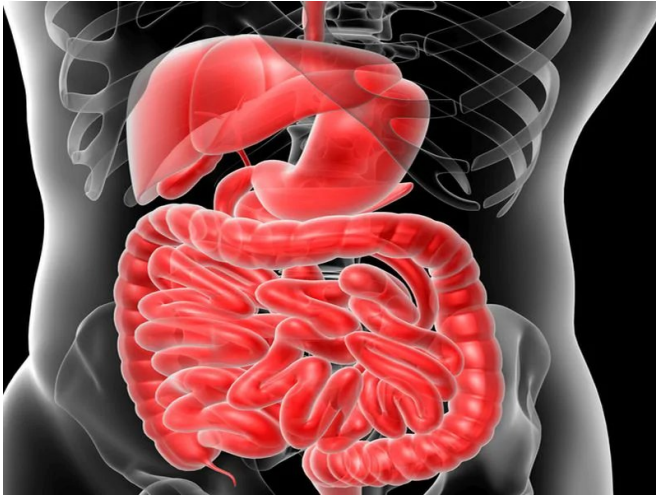


Type 2 diabetes linked to colorectal cancer risk in men

6 December 2018



significant association between T2D and CRC risk (hazard ratio, 1.17; 95 percent confidence interval, 0.98 to 1.39).

"More studies are warranted to further investigate the underlying mechanisms," the authors write. "Our finding further underscores the importance of enhancing the effort to reduce the emerging epidemics of type 2 diabetes for [colorectal cancer](#) prevention and control."

More information: [Abstract/Full Text](#) ([subscription or payment may be required](#))

Copyright © 2018 [HealthDay](#). All rights reserved.

(HealthDay)—Type 2 diabetes (T2D) is associated with an increased risk for colorectal cancer (CRC), with the association significant for men only, according to a study published online Nov. 7 in the *British Journal of Cancer*.

Yanan Ma, from China Medical University in Shenyang, and colleagues followed 87,523 women from the Nurses' Health Study and 47,240 men from the Health Professionals Follow-up Study to examine the correlation of T2D and its duration with the [risk](#) for incident CRC.

The researchers documented 3,000 cases of CRC during a follow-up of 32 years. Among men, the risk for CRC was increased for those with versus those without T2D (hazard ratio, 1.42; 95 percent confidence interval, 1.12 to 1.81). The positive association remained in sensitivity analyses excluding CRC identified within one year of diabetes diagnosis and excluding patients with T2D using hypoglycemic medications. Among [women](#), there was a positive but not statistically

APA citation: Type 2 diabetes linked to colorectal cancer risk in men (2018, December 6) retrieved 2 August 2022 from <https://medicalxpress.com/news/2018-12-diabetes-linked-colorectal-cancer-men.html>

This document is subject to copyright. Apart from any fair dealing for the purpose of private study or research, no part may be reproduced without the written permission. The content is provided for information purposes only.