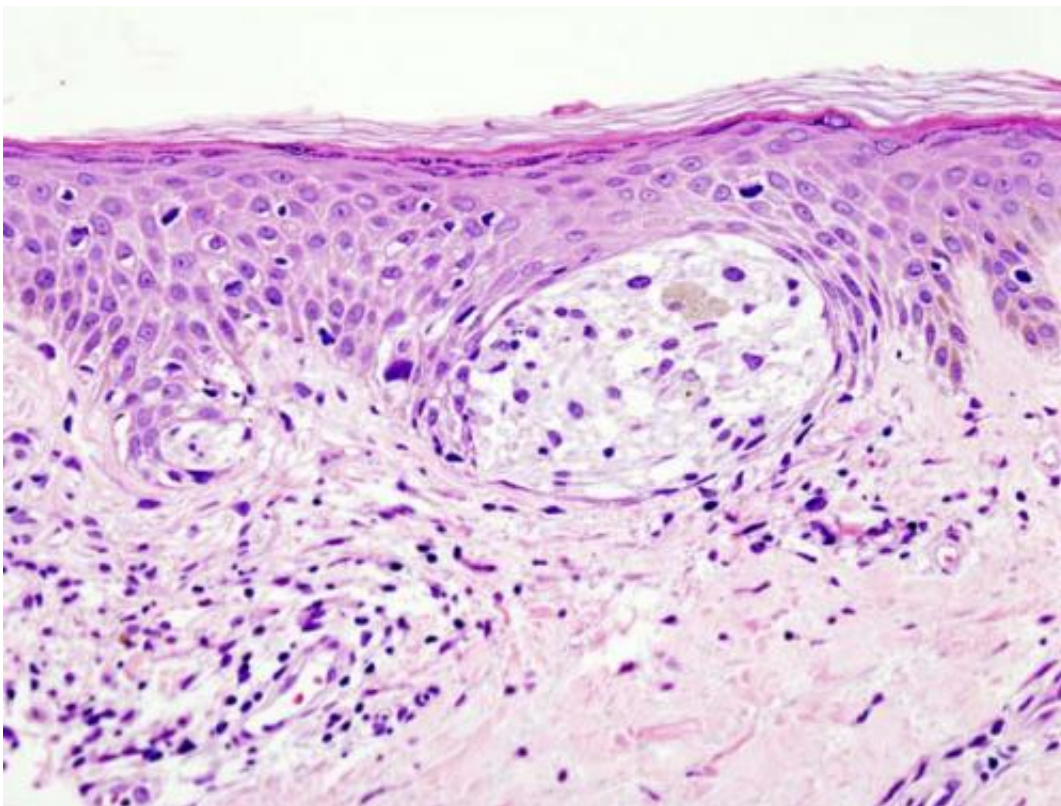


Age-related changes in skin structure and lymphatic system promote melanoma metastasis

October 2 2018



Melanoma in skin biopsy with H&E stain—this case may represent superficial spreading melanoma. Credit: Wikipedia/CC BY-SA 3.0

Changes in the structure of the skin and the lymphatic system that occur with the natural aging process create permissive conditions for

melanoma metastasis, according to two studies by The Wistar Institute. These changes are caused by loss of the HAPLN1 protein, which is part of the extracellular matrix, during aging. The studies were published back-to-back in *Cancer Discovery*.

Older age is a negative prognostic factor for [melanoma](#), associated with higher frequency of development of incurable distant metastasis. Ashani Weeraratna, Ph.D., Ira Brind Professor, and professor and co-leader of the Immunology, Microenvironment and Metastasis Program at Wistar, and team have a long-standing focus on how aging affects the melanoma microenvironment, or the tumor's ecosystem that includes [immune cells](#), fibroblasts, blood and lymphatic vessels, and signaling molecules, to understand how age-related changes contribute to tumor progression and therapy resistance.

In these new studies, the Weeraratna Lab and collaborators characterized architectural changes that occur in the extracellular matrix (ECM) in the skin and surrounding the lymphatic vessels, which promote the spread of melanoma cells to distant sites by influencing tumor cell and immune cell trafficking. They also discovered a fundamental role played by the HAPLN1 protein in the molecular mechanisms underlying these changes.

In one study, the researchers focused on ECM produced by fibroblasts in the dermal layer of the skin and observed dramatic changes in expression levels of many ECM proteins, particularly HAPLN1.

"The same structural changes that happen in our skin with aging and cause the appearance of wrinkles are also responsible for the increased risk of metastasis in older melanoma patients," said Weeraratna, senior author in both studies. "With advancing age, the network of fibers that supports our skin loses the 'basket weave' organization that is characteristic of younger skin, and becomes looser. In a tumor setting,

we think of it as a barrier that helps contain the [tumor cells](#) by inhibiting their motility while favoring infiltration of immune cells into the tumor mass. In older patients, due to the loss of HAPLN1, this barrier becomes less efficient."

By manipulating expression levels of HAPLN1 in three-dimensional human skin reconstruct models and in mouse skin models, Weeraratna and colleagues showed that loss of HAPLN1 creates a permissive microenvironment that favors escape of tumor cells while hampering trafficking of antitumor immune cells, particularly CD8+ T cells. Accordingly, injection of recombinant HAPLN1 around the tumor in melanoma mouse models reduced the size and metastatic capability of the [tumor](#).

In the second study, Weeraratna and colleagues showed that age-associated loss of lymphatic vessel integrity allows [melanoma cells](#) to escape more easily the lymphatic system and the proximal lymph nodes to reach distant sites. Results showed that this process, too, is associated with loss of HAPLN1, which causes a similar scenario to that described in the [skin](#): degradation of the [extracellular matrix](#) in which the lymphatic vessels are embedded and reduced anchorage of lymphatic endothelial cells to their structural support, which results in increased permeability.

"It is known that older individuals with melanoma have a lower incidence of lymphatic metastasis than younger patients yet higher rates of distant visceral metastasis," said Weeraratna. "Our observation that older [lymphatic vessels](#) and lymph nodes are less efficient as a barrier to contain the metastatic [cells](#) may underlie that observation."

In this setting, injection of recombinant HAPLN1 into the draining lymph nodes of aged melanoma-bearing mice increased the rates of lymphatic micrometastases while reducing the frequency of lung

metastasis, suggesting that containment of the [metastatic cells](#) in the local lymphatic system may have therapeutic implications when coupled to surgical resection of the sentinel [lymph nodes](#).

Taken together, the two studies support a novel, fundamental role for HAPLN1 as a prognostic factor for long-term survival and a potential new therapeutic avenue.

Provided by The Wistar Institute

Citation: Age-related changes in skin structure and lymphatic system promote melanoma metastasis (2018, October 2) retrieved 14 February 2023 from <https://medicalxpress.com/news/2018-10-age-related-skin-lymphatic-melanoma-metastasis.html>

This document is subject to copyright. Apart from any fair dealing for the purpose of private study or research, no part may be reproduced without the written permission. The content is provided for information purposes only.