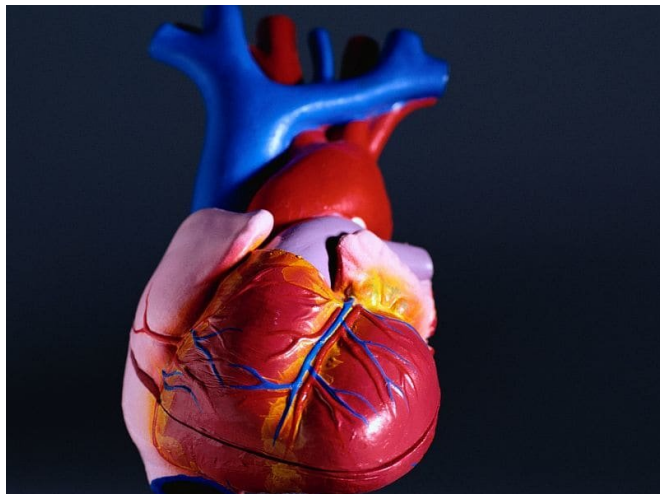


# Mortality rate from heart failure higher in women than men

24 September 2018



standardized mortality rate of 89 per 1,000 in 2009 and 85 per 1,000 in 2013 versus a male age-standardized [mortality](#) rate of 88 in 2009 and 83 in 2013. The rates of incident heart failure hospital admissions after [heart](#) failure diagnosis decreased in men and increased in women during the study period.

"Further studies should focus on sex differences in health-seeking behavior, medical therapy and response to therapy to provide guidance for personalized care," the authors write.

**More information:** [Abstract/Full Text](#)

Copyright © 2018 [HealthDay](#). All rights reserved.

(HealthDay)—Despite decreases in overall heart failure incidence and mortality in ambulatory patients from 2009 to 2014, mortality rates remain higher in women than in men, according to a study recently published in *CMAJ*, the journal of the Canadian Medical Association.

Louise Y. Sun, M.D., from the University of Ottawa Heart Institute in Canada, and colleagues identified 90,707 patients diagnosed with [heart failure](#) in an ambulatory setting in Ontario (April 1, 2009, to March 31, 2014). Sex differences in heart failure incidence, mortality, and hospital admission were assessed.

The researchers found that, among patients diagnosed with heart failure, women were more likely to be older and frailer than men. Comorbidities differed between males and females. Over the study period, the incidence of heart failure decreased in both sexes, as did the mortality rate. However, mortality remained higher in women than men, with a female age-

APA citation: Mortality rate from heart failure higher in women than men (2018, September 24) retrieved 29 June 2022 from <https://medicalxpress.com/news/2018-09-mortality-heart-failure-higher-women.html>

*This document is subject to copyright. Apart from any fair dealing for the purpose of private study or research, no part may be reproduced without the written permission. The content is provided for information purposes only.*