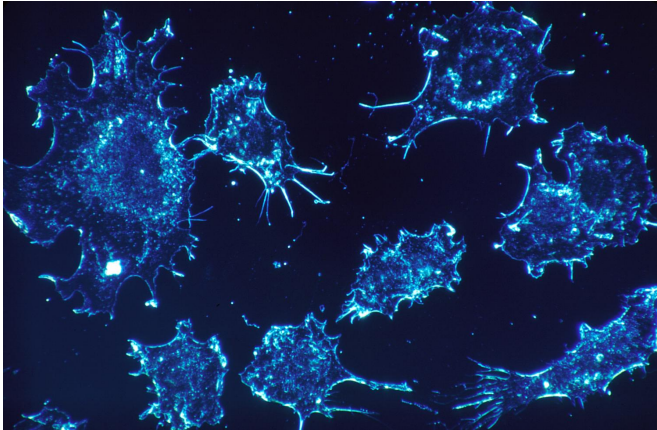


# Overcoming resistance to a standard chemotherapy drug

19 July 2018



Credit: CC0 Public Domain

Despite being studied for decades, the chemotherapy drug cisplatin is revealing new aspects of how it works. Researchers at Winship Cancer Institute of Emory University have identified an enzyme responsible for making tumors and cancer cell lines resistant to cisplatin, along with an experimental drug that targets that enzyme.

The results are scheduled for publication in *Cancer Cell*.

Cisplatin is a DNA-damaging agent used in standard treatment for lung, head and neck, ovarian, and testicular cancers. It has a simple structure, grabbing DNA with its metallic (platinum) arms to form crosslinks. It used to be known as "cis-flatten" because of its nausea-inducing side effects. The [experimental drug](#), lestaurtinib, has already been tested in clinical studies in combination with other chemotherapy drugs, which means it could easily go into trials against tumors displaying [cisplatin](#) resistance.

Sumin Kang, Ph.D., and colleagues at Winship decided to look for enzymes whose activity was

necessary for [cancer cells](#) to withstand cisplatin treatment. They chose kinases, enzymes that often control some aspect of cell growth and are have plenty of existing drugs targeting them. The researchers found that in combination with a sub-lethal amount of cisplatin, "knocking down" the activity of the kinase MAST1 kills a cell. But how does that combination work?

"We tested every type of [drug](#) resistance mechanism," says Kang, assistant professor of hematology and medical oncology at Emory University School of Medicine and a Robbins Scholar pilot grant recipient at Winship. "It seems to be 'post target.' That means it's not related to the [cells](#) getting rid of the drug faster. And it doesn't work on other agents that damage DNA, so it's not related to enhanced repair."

Instead, MAST1 seems to substitute for the activation of survival enzymes, cRaf and MEK1, which cisplatin interferes with. Cisplatin was known to damage DNA and to unleash reactive oxygen species within the cell, but the interaction between cisplatin and the survival enzymes had not been observed before, Kang says. Levels of MAST1 seem to account for cisplatin resistance, in a survey of cancer cell lines and primary human tumor samples.

The next step was to look for compounds that might inhibit MAST1. Kang's team found one in lestaurtinib, a kinase inhibitor that has already been in clinical trials for several types of cancer, such as acute myelogenous leukemia. It was a surprise because lestaurtinib was thought to inhibit a different type of kinase (tyrosine kinases) than MAST1.

"It opens up several possibilities, such as lestaurtinib, and other inhibitors," Kang says. "We think targeting MAST1 would be better than MEK1 because removing MAST1 doesn't have much toxic effect on cells by itself."

Potentially, such a combination could allow the dose of cisplatin to be reduced by several-fold, reducing side effects for patients, she adds.

In animal models with implanted tumors, cisplatin could be combined with lestaurtinib against several cancer cell types: head and neck squamous cell, lung [cancer](#), ovarian, and cervical carcinoma.

The authors conclude:

"MAST1-targeted therapy would be more beneficial to patients with advanced cancers or patients who received platinum-based therapy but recurred, in part, due to the induction of MAST1 during the treatment. Future pharmacokinetics and toxicity studies, and clinical trials, are warranted..."

**More information:** *Cancer Cell* (2018). [DOI: 10.1016/j.ccell.2018.06.012](#)

Provided by Emory University

APA citation: Overcoming resistance to a standard chemotherapy drug (2018, July 19) retrieved 15 November 2022 from <https://medicalxpress.com/news/2018-07-resistance-standard-chemotherapy-drug.html>

*This document is subject to copyright. Apart from any fair dealing for the purpose of private study or research, no part may be reproduced without the written permission. The content is provided for information purposes only.*