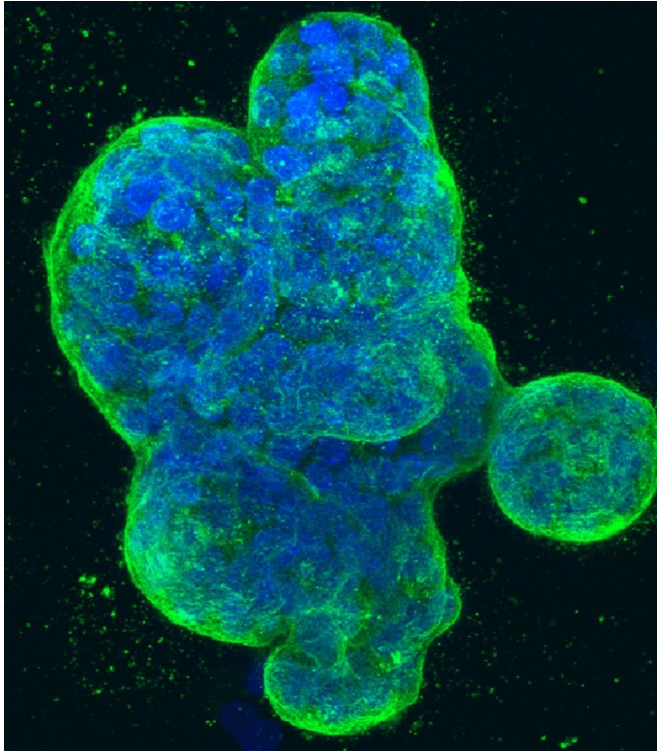


# Higher body fat linked to lower breast cancer risk in younger women

21 June 2018



Three-dimensional culture of human breast cancer cells, with DNA stained blue and a protein in the cell surface membrane stained green. Image created in 2014 by Tom Misteli, Ph.D., and Karen Meaburn, Ph.D. at the NIH IRP.

While obesity has been shown to increase breast cancer risk in postmenopausal women, a large-scale study co-led by a University of North Carolina Lineberger Comprehensive Cancer Center researcher found the opposite is true for premenopausal women: higher body fat was linked to lower breast cancer risk.

The findings, published in the journal *JAMA Oncology*, show the need to better understand [breast cancer](#) risk factors in younger [women](#) before menopause, said UNC Lineberger's Hazel

B. Nichols, Ph.D.

"The drivers of [breast cancer risk](#) can be different for young women compared to older women, so we need to do a better job of understanding what contributes specifically to breast cancer risk in younger women so we can make appropriate recommendations for them," said Nichols, who is an assistant professor in the UNC Gillings School of Global Public Health. "This study is not a reason to try to gain weight to prevent breast cancer. Heavier women have a lower overall risk of breast cancer before menopause, but there are a lot of other benefits to managing a healthy weight that should be considered. What it does do is help us to try to understand what contributes to breast cancer risk in younger women."

Breast cancer is most common in older women, with a median age of diagnosis at 62 in the United States. Obesity has been linked to higher risk for breast cancer in women after menopause, which occurs, on average, at age 51 in the United States.

Since breast cancer is less common in younger women, researchers pooled data from 19 different studies to investigate breast cancer risk for a group of 758,592 women who were younger than 55 years.

"Studies often have smaller numbers of premenopausal breast cancers since breast cancer is less common at younger ages, and the evidence was not as strong as for postmenopausal breast cancer," Nichols said.

Their analysis linked a higher body mass index, or BMI, to lower breast cancer risk for younger women across this age group, even for women within a normal weight range.

"We saw a trend where, as BMI went up, cancer risk went down," Nichols said. "There was no threshold at which having a higher BMI was linked

to lower cancer risk."

The largest reductions in risk were for BMI between the ages of 18 and 24, with a 23 percent lower breast cancer risk linked to each five-unit increase in BMI during this time period. At ages 25 to 34, each five-unit increase in BMI was linked to 15 percent lower risk. There was a 13 percent lower risk for BMI at ages 35 to 44, and a 12 percent lower risk for BMI at ages 45 to 54 years.

They also saw the risk decreases linked to higher body mass index for [estrogen](#)- or progesterone-receptor positive breast cancer, but they did not see a consistent relationship for BMI and triple negative breast cancer, or hormone-receptor negative breast cancer.

Nichols said multiple factors could be contributing to the link between higher BMI and lower breast cancer risk in younger women, such as differences in hormones, including estrogen, growth factors, or breast density. Estrogen can be a driver of breast cancer, but there are different levels and sources of estrogen before and after menopause. Before menopause onset, the primary source of estrogen comes from the ovaries, and estrogen produced by fatty tissue may help to downregulate the amount of estrogen produced by the ovaries.

"The amount of estrogen produced by your ovaries is driven by feedback loops in your body," Nichols said. "The small amount of estrogen produced by fat tissue before menopause may help tell the ovaries that they can produce less estrogen and also regulate other hormones or growth factors." Nichols said that after menopause, women with higher adipose tissue have higher estrogen levels.

"After menopause, the ovaries are no longer the primary source of estrogen," she said. "Instead, most estrogens come from adipose, or fat, tissue," she said. "Women who have more adipose tissue after menopause usually have higher levels of estrogen which can contribute to higher breast cancer risk. In young women, estrogen is one factor that contributes, but it's not the whole story."

To further their investigation of breast cancer risk

factors, Nichols said the group will take a closer look at patterns of risk according to weight change in early-to-mid-adulthood and will also consider the role of pregnancy, and other factors that may be important to consider for breast cancer risk at younger ages.

"Although breast cancer is more common at older ages, it's actually the most common type of cancer diagnosed among reproductive-aged women," Nichols said. "Understanding risk factors that may operate differently before [menopause](#) is critical to reducing breast cancer risk in young women, but these factors are hard to study in traditional settings where there are fewer young women in cancer research. The Premenopausal Breast Cancer Collaborative Group, which was founded by investigators at UNC, the National Institute of Environmental Health Sciences in North Carolina and the Institute of Cancer Research in London, gives us a way forward to investigate breast [cancer](#) in younger populations."

**More information:** Association of Body Mass Index and Age With Subsequent Breast Cancer Risk in Premenopausal Women, *JAMA Oncol.* Published online June 21, 2018. [doi:10.1001/jamaoncol.2018.1771](https://doi.org/10.1001/jamaoncol.2018.1771)

Provided by UNC Lineberger Comprehensive Cancer Center

APA citation: Higher body fat linked to lower breast cancer risk in younger women (2018, June 21)  
retrieved 2 May 2021 from <https://medicalxpress.com/news/2018-06-higher-body-fat-linked-breast.html>

*This document is subject to copyright. Apart from any fair dealing for the purpose of private study or research, no part may be reproduced without the written permission. The content is provided for information purposes only.*