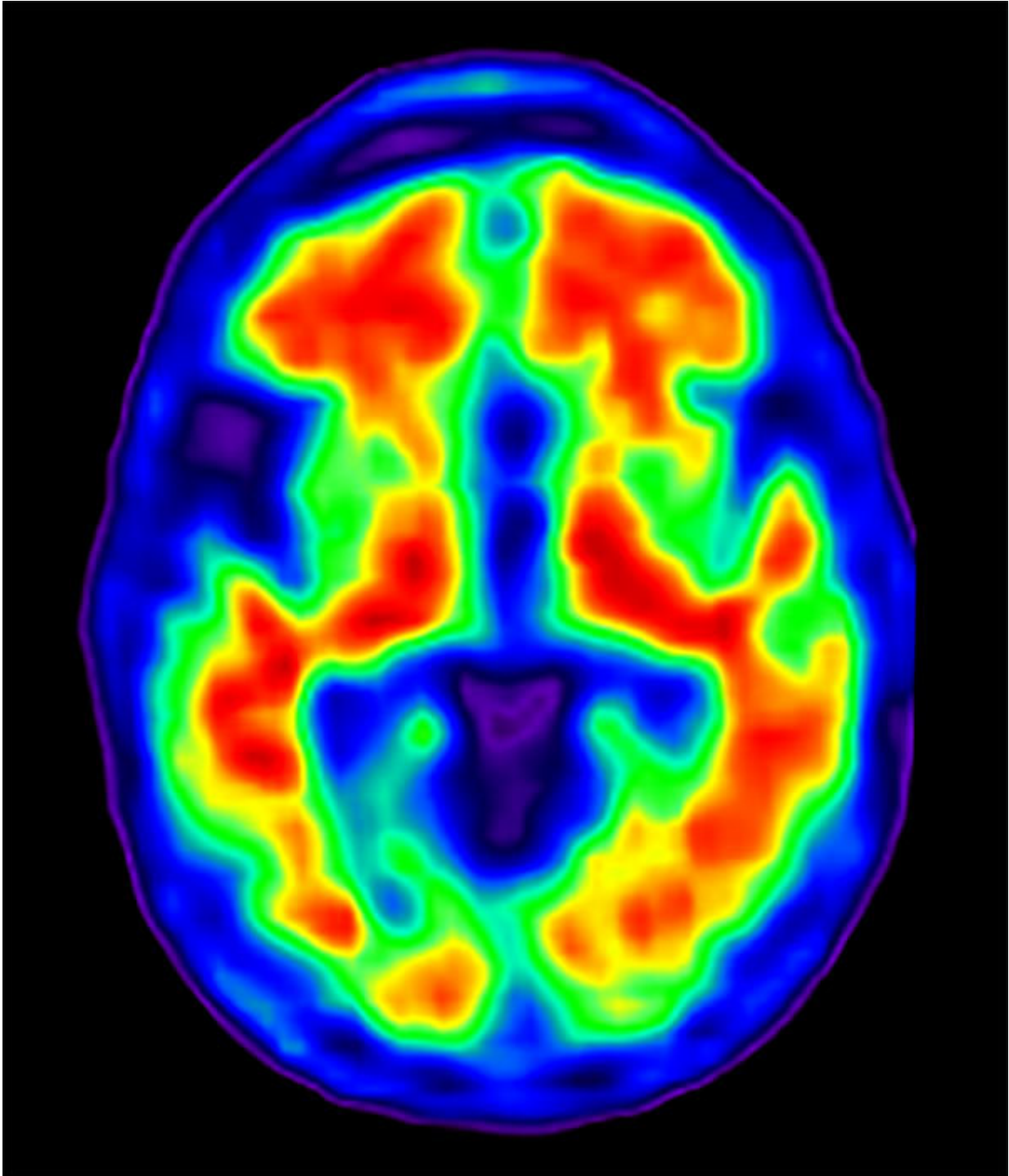


Research offers potential insight into Alzheimer's disease

April 16 2018



Subjects with higher levels of beta-amyloid, shown in red in this brain scan, showed less activity in brain regions involved in working memory as they engaged in a cognitively demanding task. Credit: University of Texas at Dallas

Slightly elevated beta-amyloid levels in the brain are associated with increased activity in certain brain regions, according to a new study from the Center for Vital Longevity (CVL) at The University of Texas at Dallas.

But that increase in activity might not be such a positive thing. The results indicate that the brains of these individuals may be working harder or recruiting more cognitive resources to complete tasks than those with lower levels of beta-amyloid, the main component of amyloid plaques, the study authors said.

The new research, published in the journal *NeuroImage*, offers a window into when these increasing levels of beta-amyloid, widely known as a risk factor for Alzheimer's disease, might reach tipping points in the brain, when regions crucial to memory begin behaving differently. Such points might foreshadow important milestones in the disease process.

Study author Dr. Chris Foster, a postdoctoral researcher at CVL, explored a new way to interpret discrepancies found across [functional magnetic resonance](#) imaging studies that show increased and decreased [brain activity](#) amid varying beta-amyloid levels.

Subjects with slightly elevated levels of beta-amyloid exhibited more activity in brain regions involved in working memory as they engaged in a cognitively demanding task, Foster found. But in individuals with even higher levels of the protein fragment, there was a return to lower activation during the demanding task, showing levels of brain activity that were more like those in people with very little amyloid—a process the authors call "pseudonormalization."

In all, participants in the study included 62 healthy adults from ages 51 to 94. Although the study is cross-sectional, rather than following the same individuals over time, this novel research offers a step toward

better determining when in their lifespan an individual with rising levels of beta-amyloid might experience changes in the way the brain operates. A better understanding of these subtle shifts in brain function could lead to new insights into how Alzheimer's disease progresses and possible ways to diagnose it earlier.

"While there may be no outward sign of memory impairment, and no behavioral manifestations of memory issues early on, it is important to understand subtle shifts in the way the brain is functioning in order to understand the disease process with the hope of intervening before it is too late," said Foster, who works in the lab of Dr. Karen Rodrigue, an assistant professor in the School of Behavioral and Brain Sciences.

In addition to Rodrigue as the corresponding author, other CVL scientists on the research paper are Dr. Kristen Kennedy, assistant professor; and doctoral students Marci Horn and David Hoagey.

"This work will likely prompt those in the field who are specifically looking for markers or milestones of when the brain transitions between different activation levels, to re-evaluate some of their data," Kennedy said.

Prior to the study, Foster said he considered evidence that suggests a change from increased to decreased [brain](#) activity actually might occur in the transition from [mild cognitive impairment](#) to Alzheimer's disease.

"The hyper-activation we saw in some people seems to be the result of the excitatory effects of amyloid, at least initially," Foster said. "As amyloid accumulates even further, it may act to then dampen the activity, at which point cognition may begin to exhibit subtle changes."

More information: Chris M. Foster et al. Both hyper- and hypo-activation to cognitive challenge are associated with increased beta-

amyloid deposition in healthy aging: A nonlinear effect, *NeuroImage* (2017). [DOI: 10.1016/j.neuroimage.2017.10.068](https://doi.org/10.1016/j.neuroimage.2017.10.068)

Provided by University of Texas at Dallas

Citation: Research offers potential insight into Alzheimer's disease (2018, April 16) retrieved 23 January 2023 from <https://medicalxpress.com/news/2018-04-potential-insight-alzheimer-disease.html>

This document is subject to copyright. Apart from any fair dealing for the purpose of private study or research, no part may be reproduced without the written permission. The content is provided for information purposes only.