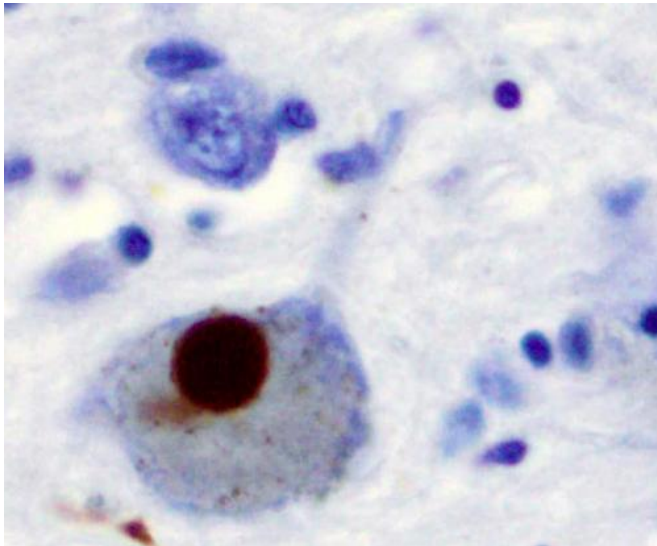


# Caffeine level in blood may help diagnose people with Parkinson's disease

3 January 2018



Immunohistochemistry for alpha-synuclein showing positive staining (brown) of an intraneuronal Lewy-body in the Substantia nigra in Parkinson's disease. Credit: Wikipedia

Testing the level of caffeine in the blood may provide a simple way to aid the diagnosis of Parkinson's disease, according to a study published in the January 3, 2018, online issue of *Neurology*, the medical journal of the American Academy of Neurology.

The study found that people with Parkinson's [disease](#) had significantly lower levels of [caffeine](#) in their blood than people without the disease, even if they consumed the same amount of caffeine.

"Previous studies have shown a link between caffeine and a lower risk of developing Parkinson's disease, but we haven't known much about how caffeine metabolizes within the people with the disease," said study author Shinji Saiki, MD, Ph.D., of Juntendo University School of Medicine in Tokyo, Japan.

People in the study with more severe stages of the disease did not have lower levels of caffeine in the blood, suggesting that the decrease occurs from the earliest stages of the disease, according to David G. Munoz, MD, of the University of Toronto in Canada, who wrote an editorial accompanying the study.

"If these results can be confirmed, they would point to an easy test for early diagnosis of Parkinson's, possibly even before symptoms are appearing," Munoz said. "This is important because Parkinson's disease is difficult to diagnose, especially at the early stages."

The study involved 108 people who had Parkinson's disease for an average of about six years and 31 people of the same age who did not have the disease. Their blood was tested for caffeine and for 11 byproducts the body makes as it metabolizes caffeine. They were also tested for mutations in genes that can affect caffeine metabolism.

The two groups consumed about the same amount of caffeine, with an average equivalent to about two cups of coffee per day. But the people with Parkinson's disease had significantly lower blood levels of caffeine and nine of the 11 byproducts of caffeine in the [blood](#). The caffeine level was an average of 79 picomoles per 10 microliters for people without Parkinson's disease, compared to 24 picomoles per 10 microliters for people with the disease. For one of the byproducts, the level was below the amount that could be detected in more than 50 percent of the people with Parkinson's disease.

In the statistical analysis, the researchers found that the test could be used to reliably identify the people with Parkinson's disease, with a score of 0.98 where a score of 1 means that all cases are identified correctly.

In the genetic analysis, there were no differences in the caffeine-related genes between the two groups.

Limitations of the study include that people with severe Parkinson's disease were not included, which could affect the ability to detect an association between disease severity and caffeine levels. Munoz also noted that all of the people with Parkinson's were taking Parkinson's medication and it's possible that these drugs could affect the metabolism of caffeine.

Provided by American Academy of Neurology

APA citation: Caffeine level in blood may help diagnose people with Parkinson's disease (2018, January 3) retrieved 15 July 2022 from <https://medicalxpress.com/news/2018-01-caffeine-blood-people-parkinson-disease.html>

*This document is subject to copyright. Apart from any fair dealing for the purpose of private study or research, no part may be reproduced without the written permission. The content is provided for information purposes only.*