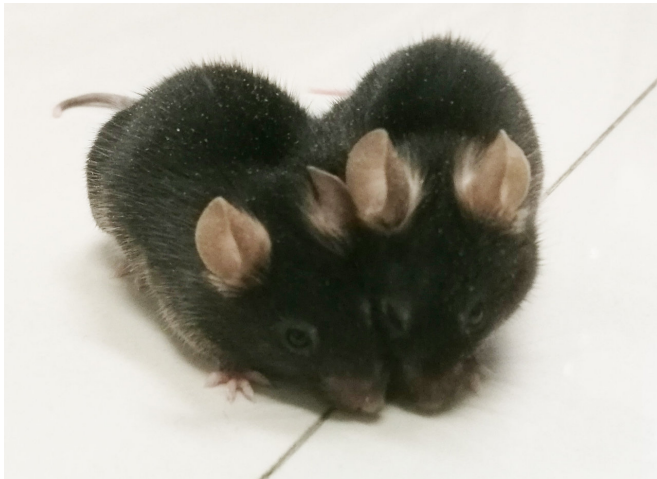


Alzheimer's disease might be a 'whole body' problem

31 October 2017



Pair of surgically joined mice. Credit: University of British Columbia

Alzheimer's disease, the leading cause of dementia, has long been assumed to originate in the brain. But research from the University of British Columbia and Chinese scientists indicates that it could be triggered by breakdowns elsewhere in the body.

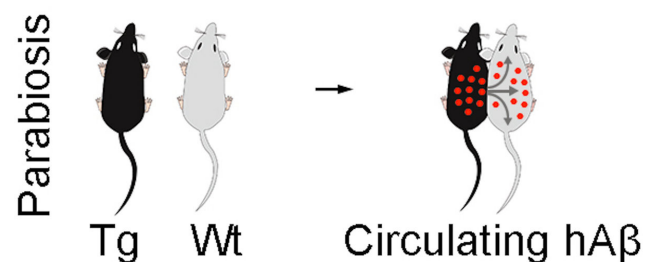
The findings, published today in *Molecular Psychiatry*, offer hope that future drug therapies might be able to stop or slow the disease without acting directly on the [brain](#), which is a complex, sensitive and often hard-to-reach target. Instead, such drugs could target the kidney or liver, ridding the blood of a toxic [protein](#) before it ever reaches the brain.

The scientists demonstrated this cancer-like mobility through a technique called parabiosis: surgically attaching two specimens together so they share the same blood supply for several months.

UBC Psychiatry Professor Dr. Weihong Song and

Neurology Professor Yan-Jiang Wang at Third Military Medical University in Chongqing attached [normal mice](#), which don't naturally develop Alzheimer's disease, to [mice](#) modified to carry a mutant human gene that produces high levels of a protein called amyloid-beta. In people with Alzheimer's disease, that protein ultimately forms clumps, or "plaques," that smother brain cells.

Normal mice that had been joined to genetically modified partners for a year "contracted" Alzheimer's disease. Song says the amyloid-beta traveled from the genetically-modified mice to the brains of their normal partners, where it accumulated and began to inflict damage.



An illustration of the experiment in which mice that were genetically engineered to produce amyloid-beta spread the protein to their surgically joined partners, where it caused Alzheimer's disease pathologies. Credit: University of British Columbia

Not only did the normal mice develop plaques, but also a pathology similar to "tangles" - twisted protein strands that form inside brain cells, disrupting their function and eventually killing them from the inside-out. Other signs of Alzheimer's-like damage included brain cell degeneration, inflammation and microbleeds. In addition, the ability to transmit electrical signals involved in learning and memory - a sign of a healthy brain -

was impaired, even in mice that had been joined for just four months.

Besides the brain, amyloid-beta is produced in blood platelets, blood vessels and muscles, and its precursor protein is found in several other organs. But until these experiments, it was unclear if amyloid-beta from outside the brain could contribute to Alzheimer's disease. This study, Song says, shows it can.

"The blood-brain barrier weakens as we age," says Song, a Canada Research Chair in Alzheimer's Disease and the Jack Brown and Family Professor. "That might allow more amyloid beta to infiltrate the brain, supplementing what is produced by the brain itself and accelerating the deterioration."

Song, head of UBC's Townsend Family Laboratories, envisions a drug that would bind to amyloid-beta throughout the body, tagging it biochemically in such a way that the liver or kidneys could clear it.

"Alzheimer's disease is clearly a [disease](#) of the brain, but we need to pay attention to the whole body to understand where it comes from, and how to stop it," he says.

More information: *Molecular Psychiatry* (2017).
[DOI: 10.1038/mp.2017.204](https://doi.org/10.1038/mp.2017.204)

Provided by University of British Columbia
APA citation: Alzheimer's disease might be a 'whole body' problem (2017, October 31) retrieved 26 July 2022 from <https://medicalxpress.com/news/2017-10-alzheimer-disease-body-problem.html>

This document is subject to copyright. Apart from any fair dealing for the purpose of private study or research, no part may be reproduced without the written permission. The content is provided for information purposes only.