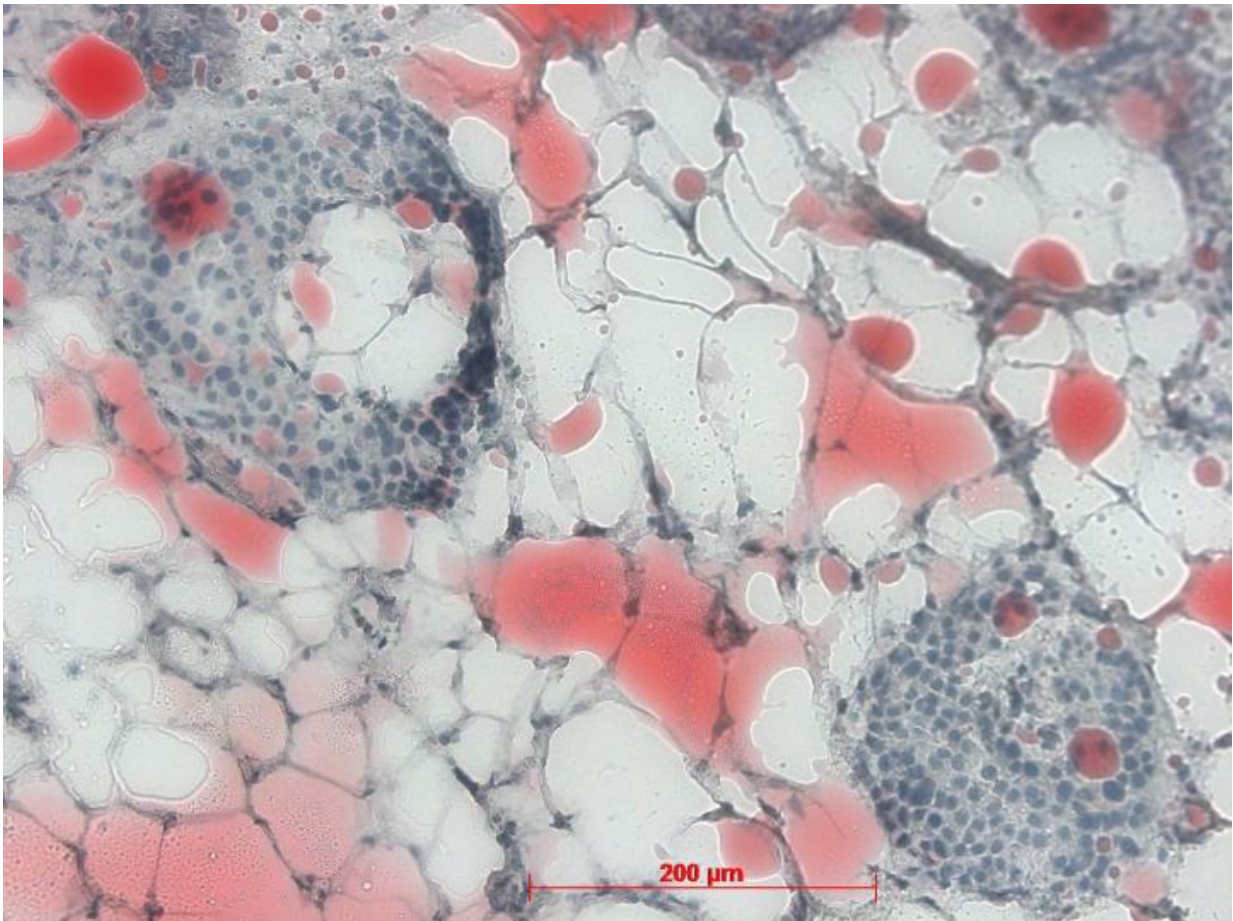


Fatty liver can cause damage to other organs via crosstalk

August 21 2017



Adipose cells (white/dyed red) next to an insulin-producing islet in the pancreas.
Credit: IDM

Nonalcoholic fatty liver disease is increasingly common. Approximately every third adult in industrialized countries has a morbidly fatty liver. This not only increases the risk of chronic liver diseases such as liver cirrhosis and liver cancer, but also the risk of type 2 diabetes and cardiovascular diseases. The cause for this is the altered secretion behavior of the fatty liver. It increasingly produces glucose, and unfavorable fats and proteins such as the hepatokine fetuin-A, all of which it releases into the bloodstream. Thus, the secreted substances of the fatty liver enter other organs and trigger further reactions. However, researchers did not know the effects of this "organ crosstalk," which organs are most affected, or what damage is caused by the hepatokine fetuin-A.

To elucidate the causal mechanisms and the resulting changes, researchers at the University of Tübingen studied the influence of fetuin-A on pancreatic adipose tissue. Approximately one-third of the pancreatic adipose tissue consists of adipose precursor cells (a type of stem cell) in addition to the mature adipose cells. If the pancreatic adipose cells are treated with fetuin-A in cell cultures, the mature adipose cells, in particular the adipose precursor cells in interaction with the islet cells, increasingly produce inflammation markers and immune-cell-attracting factors.

In addition, the researchers histologically analyzed tissue samples from 90 patients and found that the proportion of the pancreatic fat varied greatly. The number of defense cells of the immune system (monocytes/macrophages) was significantly increased in areas where many adipose [cells](#) had accumulated.

In a cohort of 200 subjects with an increased risk of type 2 diabetes, pancreatic fat content was measured by means of magnetic resonance imaging and compared with diabetes parameters. It was found that in persons who had already experienced a worsening of blood glucose

regulation, an increased pancreatic fatty degeneration was associated with reduced insulin secretion. The investigations were carried out by Professor Hans Ulrich Häring and the Endocrinology Research Group, together with scientists from the Department of Experimental Radiology at the University of Tübingen.

These analyses, published in the journals *Diabetologia* and *Diabetes/Metabolism Research and Reviews*, suggest that a fatty liver, together with a fatty degeneration of the pancreas, triggers increased local immune cell infiltration and inflammation that accelerate the course of the disease.

However, adipose tissue is not harmful per se. It can even have protective effects. For example, adipose tissue located around blood vessels or the kidney has regenerative properties. "The factor that leads to pathological changes is fetuin-A, which is produced by the fatty liver," said Tübingen Professor Dorothea Siegel-Axel. As a result, instead of protecting tissue as before, the adipose tissue elicits inflammatory processes. This leads to a restriction of renal function. This is demonstrated by studies on arteries and the kidney, which have recently been published by the working group in the journal *Scientific Reports*.

"The statement that obesity in itself always has a disease-causing effect is too imprecise. Not until further parameters have been determined, such as fatty [liver](#) and hepatokine levels, as well as the elicited changes in other organs, can we obtain more exact indications as to whether a person has an increased disease risk or not," said Professor Häring, board member of the DZD and director of the IDM, summarizing the current results.

More information: Felicia Gerst et al, Metabolic crosstalk between fatty pancreas and fatty liver: effects on local inflammation and insulin

secretion, *Diabetologia* (2017). [DOI: 10.1007/s00125-017-4385-1](https://doi.org/10.1007/s00125-017-4385-1)

Provided by Deutsches Zentrum fuer Diabetesforschung DZD

Citation: Fatty liver can cause damage to other organs via crosstalk (2017, August 21) retrieved 12 July 2023 from <https://medicalxpress.com/news/2017-08-fatty-liver-crosstalk.html>

This document is subject to copyright. Apart from any fair dealing for the purpose of private study or research, no part may be reproduced without the written permission. The content is provided for information purposes only.