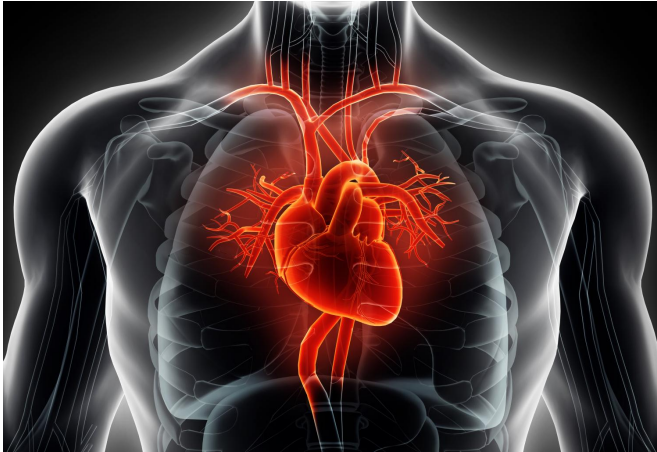


A sodium surprise: Engineers find unexpected result during cardiac research

20 July 2017, by Erika Ebsworth-Goold



signal that makes the heartbeat: Zoltan Varga at the University of Debrecen in Hungary; and Jeanne M. Nerbonne, Alumni Endowed Professor of Molecular Biology and Pharmacology and Director of the Center for Cardiovascular Research at Washington University's School of Medicine.

"Sodium channels aren't made out of just one part," Silva said. "The main portion is a really big protein made up of more than 2,000 amino acids, and then there are smaller proteins called beta subunits that attach to it. We wanted to understand what the differences were in how the beta subunits controlled the channel."

Engineers at Washington University in St. Louis have discovered something new about how sodium ions act in cardiac muscle, a finding that could someday help inform treatment of heart arrhythmia. Credit: Washington University in St. Louis

Irregular heartbeat—or arrhythmia—can have sudden and often fatal consequences. A biomedical engineering team at Washington University in St. Louis examining molecular behavior in cardiac tissue recently made a surprising discovery that could someday impact treatment of the life-threatening condition.

"It was a fun finding, not at all what we expected to see," said Jonathan Silva, assistant professor of biomedical engineering at the School of Engineering & Applied Science.

Silva and his team study sodium ion channels—tiny proteins in cardiac muscle that electrically control a [heartbeat](#)—and how they interact with molecules which could affect their performance. In new research, recently published by the *Journal of General Physiology*, Silva worked with collaborators to take a closer look at the sodium ion channels responsible for creating the electrical



Silva and his colleagues found certain sodium subunits attached to the main protein in different places. It was an unexpected result that could lead to better drug delivery and efficacy for patients with heart arrhythmia. Credit: Washington University in St. Louis

Using an imaging technique called voltage-clamp fluorometry, Silva and his team observed that two different beta subunits worked on the channel in very different ways. The results were unexpected.

"Most people believe that these subunits attach to the same place on the main [protein](#)," Silva explained. "But what we found was, they attached to different places and they have different effects. We think those different effects are going to change how patients respond to drug therapies, how those different subunits control the [channel](#), and therefore the heartbeat."

Silva says this new information is another piece in a vast puzzle: As researchers obtain better information on exactly how [sodium](#) ion channels work to keep a strong, steady heartbeat, they can work toward developing therapies specific to an individual's exact needs.

"It's gaining the mechanistic insight that we need to perform precision, molecularly-driven medicine," Silva said.

More information: Wandu Zhu et al, Mechanisms of noncovalent ? subunit regulation of Na V channel gating, *The Journal of General Physiology* (2017).
[DOI: 10.1085/jgp.201711802](https://doi.org/10.1085/jgp.201711802)

Provided by Washington University in St. Louis

APA citation: A sodium surprise: Engineers find unexpected result during cardiac research (2017, July 20) retrieved 6 May 2021 from <https://medicalxpress.com/news/2017-07-sodium-unexpected-result-cardiac.html>

This document is subject to copyright. Apart from any fair dealing for the purpose of private study or research, no part may be reproduced without the written permission. The content is provided for information purposes only.