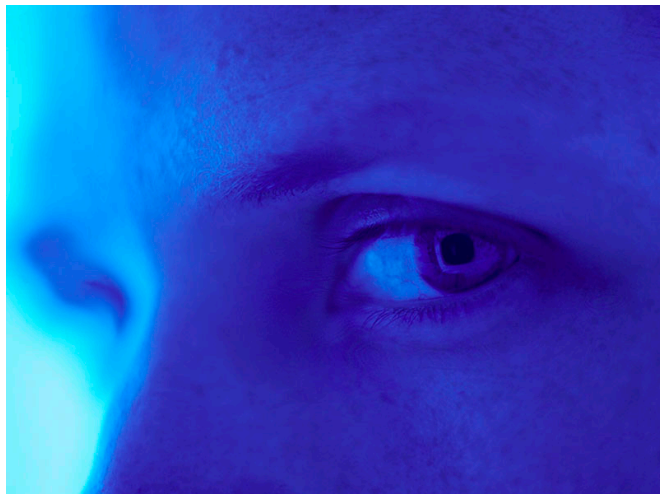


# Diabetes linked to increased incidence of conjunctivitis

6 January 2017



confounders and amendment of P values for multiple comparisons using the Bonferroni and Sidak corrections (odds ratios, 1.61 and 1.11, respectively). There were no correlations with blepharitis, stye/chalazion, periorbital cellulitis, keratitis/keratoconjunctivitis, lacrimal gland infection, or endophthalmitis. There was no correlation for glycemic control with any infection. Diabetes also correlated with significantly increased incidence of antimicrobial prescriptions (odds ratios, 1.69 and 1.17 for type 1 and 2 diabetes, respectively).

"We found that conjunctivitis occurs more frequently in people with diabetes," the authors write.

Several authors disclosed financial ties to the pharmaceutical, medical technology, and medical device industries.

(HealthDay)—Diabetes is associated with increased incidence of conjunctivitis, according to a study published online Dec. 29 in *Diabetes Care*.

**More information:** [Full Text \(subscription or payment may be required\)](#)

Abdus Samad Ansari, from the University of Surrey in Guildford, U.K., and colleagues conducted a two-stranded study to examine whether infectious disease affecting the external eye and surrounding structures is associated with [diabetes](#). They measured the incidence of infections over six years in a whole population cohort study to examine the frequency of [eye infections](#) in those with versus without diabetes, and in a cohort study in a population with diabetes to examine the impact of [glycemic control](#) on eye infection rates. The total population was 938,440 individuals without diabetes and 48,584 individuals with diabetes (3,273 with type 1 diabetes and 45,311 with type 2 diabetes).

Copyright © 2017 [HealthDay](#). All rights reserved.

The researchers found that type 1 and type 2 diabetes correlated with significantly increased incidence of conjunctivitis after adjustment for

APA citation: Diabetes linked to increased incidence of conjunctivitis (2017, January 6) retrieved 21 September 2022 from <https://medicalxpress.com/news/2017-01-diabetes-linked-incidence-conjunctivitis.html>

*This document is subject to copyright. Apart from any fair dealing for the purpose of private study or research, no part may be reproduced without the written permission. The content is provided for information purposes only.*