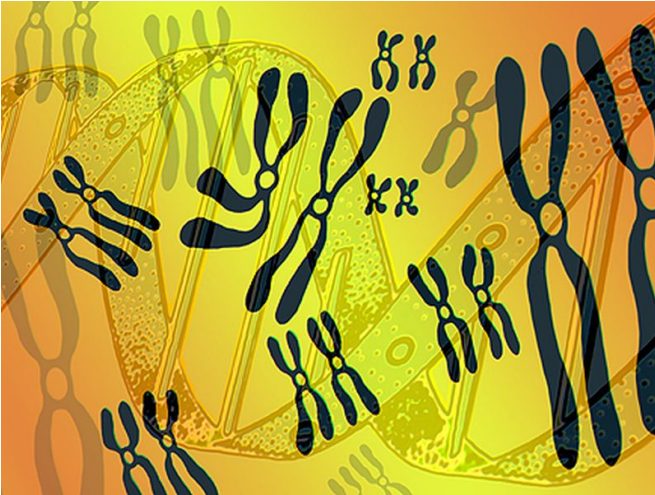


BACH2 identified as risk locus for Addison's disease

8 November 2016



diseases co-inherited with Addison's disease, we have identified *BACH2* as a major risk locus in Addison's disease, independent of concomitant autoimmune diseases," the authors write.

More information: [Full Text](#)

Copyright © 2016 [HealthDay](#). All rights reserved.

(HealthDay)—*BACH2* is a major risk locus for Addison's disease, according to a study published online Nov. 2 in the *Journal of Internal Medicine*.

Daniel Eriksson, M.D., from the Karolinska Institutet in Stockholm, and colleagues used data from extensively characterized patients of the Swedish Addison Registry to understand the [genetic background](#) of Addison's disease. An extended exome capture array was developed for the purpose of sequencing 479 patients with Addison's disease and 1,394 controls; the array comprised a selected set of 1,853 genes and their potential regulatory elements.

The researchers identified *BACH2* as a novel gene that correlated with development of Addison's disease (rs62408233-A, odds ratio, 2.01). The previously identified correlation with the [human leukocyte antigen](#) complex was also confirmed.

"Whilst *BACH2* has been previously reported to associate with organ-specific autoimmune

APA citation: BACH2 identified as risk locus for Addison's disease (2016, November 8) retrieved 5 July 2022 from <https://medicalxpress.com/news/2016-11-bach2-locus-addison-disease.html>

This document is subject to copyright. Apart from any fair dealing for the purpose of private study or research, no part may be reproduced without the written permission. The content is provided for information purposes only.