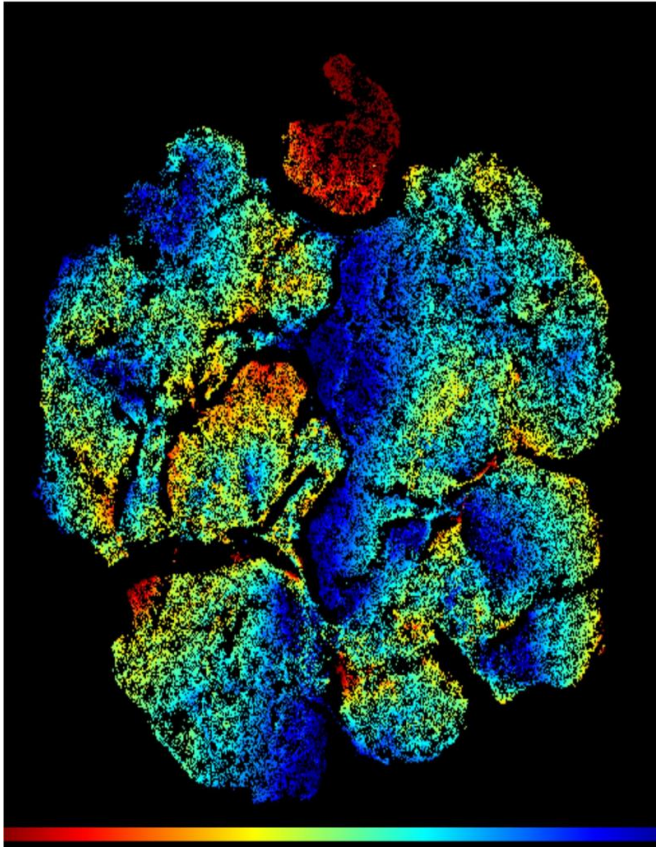


Researchers identify possible pathway to reboot immune system after bone-marrow transplants

25 August 2016



A ViSNE plot of immature T-cells that reside in the thymus, the sole site of T-cell production. Highlighted in red is a population of T-cell progenitors that colonise the thymus and give rise to all T-cells. The entry of these cells into the thymus is important for immune system recover post bone marrow transplantation. Credit: University of Birmingham

New research has shown how a cell surface molecule, Lymphotoxin β receptor, controls entry of T-cells into the thymus; and as such presents an opportunity to understanding why cancer patients who undergo bone-marrow transplant are slow to recover their immune system.

The study, published in the *Journal of Immunology*, used mouse models to reveal an in vivo mechanism that researchers believe might also represent a novel pathway for immunotherapeutic targeting to support patients following transplantation.

The [thymus](#), which sits in front of the heart and behind the sternum, imports T-cell precursors from the [bone marrow](#) and supports their development into mature T-cells that fight off dangerous diseases.

T-cells are often the last cells to recover in [cancer patients](#) receiving bone marrow transplants. Though the cancer is cured, patients are often left with an impaired immune system that can take years to recover.

The Birmingham team, supported by US-based collaborators at The Sanford Burnham Medical Research Institute and The Trudeau Institute, found that Lymphotoxin β receptor was required to allow the entry of T-cell progenitors to the thymus both in a healthy state, and during immune recovery following bone-marrow transplantation.

Significantly, the team also found that antibody-mediated stimulation of Lymphotoxin β receptor in murine models enhanced initial thymus recovery and boosted the number of transplant derived T-cells.

Professor Graham Anderson, from the University of Birmingham, explained, "The thymus is often something of an ignored organ, but it plays a crucial role in maintain an effective immune system."

"Post-transplantation, T-cell progenitors derived from the [bone marrow transplant](#) can struggle to enter the thymus, as if the doorway to the thymus is

closed. Identifying molecular regulators that can 'prop open' the door and allow these cells to enter and mature, could well be a means to help reboot the [immune](#) system."

Beth Lucas, also at the University of Birmingham, added, "This is just one piece of the puzzle. It may be that there are adverse effects to opening the door to the thymus, but identifying a pathway that regulates this process is a significant step."

Following these positive findings the team aim to move towards in-vitro samples of human thymus to examine the role that Lymphotoxin b receptor might play in regulation of thymus function in man.

More information: Lymphotoxin ? Receptor Controls T Cell Progenitor Entry to the Thymus; Graham Anderson et al; *Journal of Immunology*, published online before print August 22, 2016; [DOI: 10.4049/jimmunol.1601189](#)

Provided by University of Birmingham

APA citation: Researchers identify possible pathway to reboot immune system after bone-marrow transplants (2016, August 25) retrieved 12 July 2022 from <https://medicalxpress.com/news/2016-08-pathway-reboot-immune-bone-marrow-transplants.html>

This document is subject to copyright. Apart from any fair dealing for the purpose of private study or research, no part may be reproduced without the written permission. The content is provided for information purposes only.