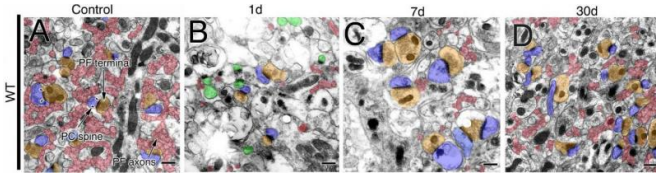


Unlocking the secrets of nerve regeneration

29 June 2016



Credit: Hokkaido University

Scientists at Hokkaido University, Japan, found that a glutamate receptor GluD2 was responsible for the regeneration of synapses in the cerebellum.

Hokkaido University researchers investigated what makes a specific nerve cell in the brain regenerate when others do not.

Nerves in the central [nervous system](#) of adult mammals do not usually regenerate when injured. The granule cell, a nerve cell located in the cerebellum, is different. When its fibres, called parallel fibres, are cut, rapid regeneration ensues and junctions with other neurons called "[synapses](#)" are rebuilt. The precise mechanism for this was unclear.

Researchers at Hokkaido University in Japan, together with colleagues from Sapporo Medical University School of Medicine and Niigata University, investigated the effect of a specific glutamate receptor, called GluD2, on parallel fibre regeneration.

GluD2 is a receptor located at the receiving end of the synapse, where the granule cell parallel fibres meet with another nerve cell type called the Purkinje cell, which is also present in the cerebellum. Nerve impulses pass via chemical mediators from one nerve fibre to another through synapses. The granule cell–Purkinje cell synapse, in particular, is where the regeneration occurs.

The GluD2 receptor is involved in maintaining the synapses between granule cell parallel fibres and Purkinje cell nerve fibres. Shutting down the gene that encodes GluD2 results in a severe reduction in these synapses.

The team investigated the effects of cutting parallel fibres in normal mice and in mice that lack the GluD2 receptor. They examined serial sections of the cerebellum under a microscope, and reconstructed three-dimensional images of parallel fibre synapses on Purkinje [cells](#) one, seven and 30 days after the incisions were made.

They found that the cut parallel fibres in normal mice underwent three distinct phases. In the first "degeneration phase", the number of parallel fibres and synapses were halved. In the second "hypertrophy phase", the number of parallel fibres remained the same, but the team observed they had undergone thickening and there was enlargement of their terminals. Interestingly, each terminal tended to make multiple synapses as opposed to a single synapse under normal conditions. In the final "remodeling phase", the number of parallel fibres was recovered and the thickening and enlargement that occurred during the hypertrophic phase were dissolved.

The parallel fibres in mice with no GluD2 receptor remained in the degenerative phase. This, the researchers conclude, indicates that GluD2 plays a "pivotal role" in the regenerative rewiring of parallel fibres.

The major obstacle to regeneration in other nerve fibres is the presence of inhibitory factors in the environment of the adult central nervous system, the researchers write in their study published in the *Journal of Neuroscience*. These inhibitors increase after injury. Further understanding of the role of GluD2 may allow researchers to unlock the regenerative capacity in the central nervous system.

More information: R. Ichikawa et al. GluD2

Endows Parallel Fiber-Purkinje Cell Synapses with a High Regenerative Capacity, *Journal of Neuroscience* (2016). DOI: [10.1523/JNEUROSCI.0161-16.2016](https://doi.org/10.1523/JNEUROSCI.0161-16.2016)

Provided by Hokkaido University

APA citation: Unlocking the secrets of nerve regeneration (2016, June 29) retrieved 30 May 2021 from <https://medicalxpress.com/news/2016-06-secrets-nerve-regeneration.html>

This document is subject to copyright. Apart from any fair dealing for the purpose of private study or research, no part may be reproduced without the written permission. The content is provided for information purposes only.