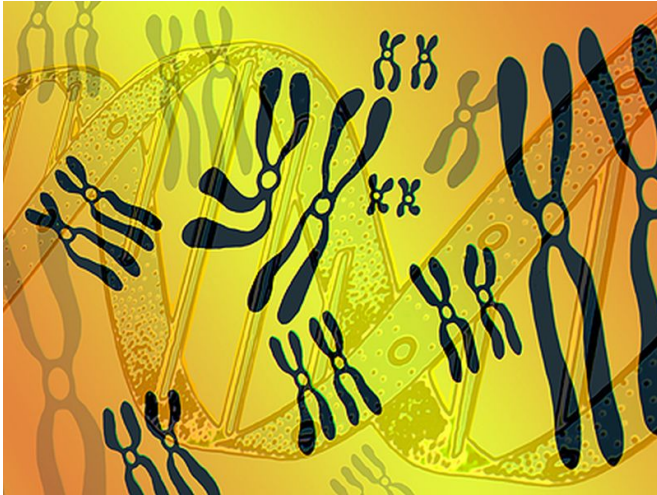


AUA: BRCA mutations may play role in prostate cancer

10 May 2016



The second study reviewed blood DNA samples from 857 prostate cancer patients treated at the Walter Reed National Military Medical Center in Bethesda, Md. Researchers found that black prostate cancer patients were more than three times as likely to have a *BRCA1* or *BRCA2* mutation as white patients—7.3 versus 2.2 percent. In addition, black prostate cancer patients were more likely to have their cancer metastasize than whites (9.4 versus 2.4 percent), and it tended to take less time for their cancer to spread.

The third study focused exclusively on men who'd been treated for [breast cancer](#). A review of 5,753 men diagnosed with breast cancer revealed that they had a more than 30 percent increased risk of developing prostate cancer later on. Doctors should consider screening men with a personal or family history of breast cancer for *BRCA* mutations that could influence their risk of prostate cancer, the researchers said.

(HealthDay)—A man's risk of aggressive and fatal prostate cancer may be heavily influenced by gene mutations previously linked to breast and ovarian cancer in women, a trio of new studies suggests. Findings from the studies were presented at the annual meeting of the American Urological Association, held from May 6 to 10 in San Diego.

More information: [Press Release](#)
[More Information](#)

Copyright © 2016 [HealthDay](#). All rights reserved.

In the first study, Srinivas Vourganti, M.D., of the SUNY Upstate Medical University in Syracuse, and colleagues conducted an evidence review. The review combined the results of 12 [prostate cancer](#) studies. Those studies included 261 men who tested positive for a *BRCA2* mutation. The researchers found that the cancer already metastasized in 17.4 percent of newly diagnosed prostate [cancer patients](#) who had a *BRCA2* mutation, compared with 4.4 percent of new diagnoses across the [general population](#). Men with *BRCA2* mutations also were much more likely to be diagnosed with late-stage prostate cancer—40.3 percent compared with 10.8 percent of the general population.

APA citation: AUA: BRCA mutations may play role in prostate cancer (2016, May 10) retrieved 28 April 2021 from <https://medicalxpress.com/news/2016-05-aua-brca-mutations-role-prostate.html>

This document is subject to copyright. Apart from any fair dealing for the purpose of private study or research, no part may be reproduced without the written permission. The content is provided for information purposes only.