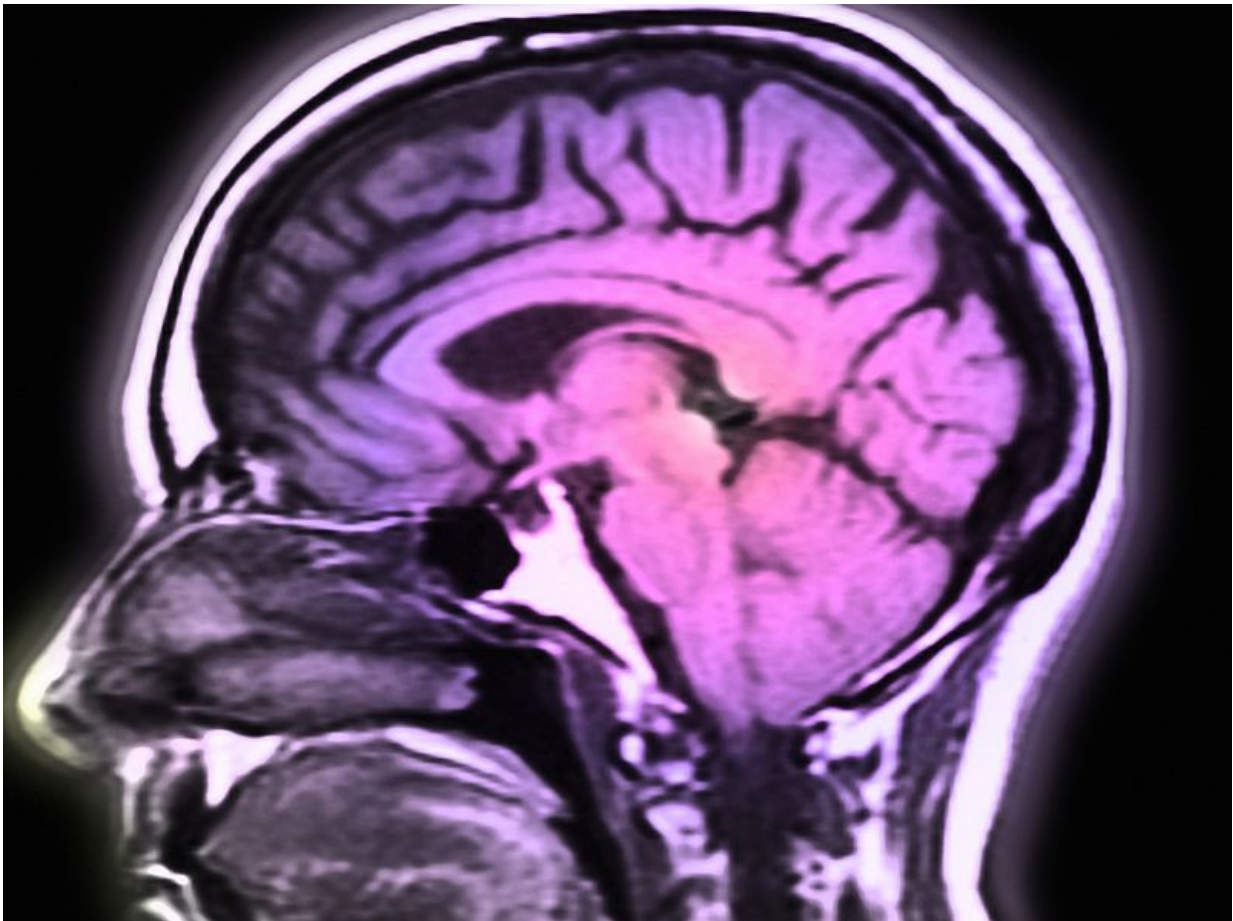


# Long-term treatment benefit seen in relapse-onset MS

May 9 2016

---



(HealthDay)—For patients with relapse-onset multiple sclerosis (MS),

disease-modifying therapy protects against long-term disability accrual, according to a study published online May 4 in the *Annals of Neurology*.

Vilija G. Jokubaitis, Ph.D., from the University of Melbourne in Australia, and colleagues examined predictors of 10-year expanded disability status scale (EDSS) change after treatment initiation in [patients](#) with relapse-onset MS. Patients had remained on injectable [therapy](#) for at least one day, and were monitored thereafter on any approved disease-modifying therapy or no therapy. Data were included for 2,466 patients who reported post-baseline disability scores during follow-up of at least 10 years.

The researchers found that patients were treated 83 percent of their follow-up time, on average. At 10 years post-baseline, EDSS scores had increased by a median of 1 point. Over 10 years, the annualized relapse rate was predictive of increases in the median EDSS. Greater burden was seen for on-therapy relapses versus off-therapy relapses. There was an independent correlation for cumulative treatment exposure with lower EDSS at 10 years. Over the 10-year observation period, pregnancies were also independently associated with lower EDSS scores.

"We provide evidence of long-term treatment benefit in a large registry cohort, and provide evidence of long-term protective effects of pregnancy against disability accrual," the authors write. "We demonstrate that high-annualized relapse rate, particularly on-treatment [relapse](#), is an indicator of poor prognosis."

Several authors disclosed financial ties to the pharmaceutical industry.

**More information:** [Abstract](#)  
[Full Text \(subscription or payment may be required\)](#)

Copyright © 2016 [HealthDay](#). All rights reserved.

Citation: Long-term treatment benefit seen in relapse-onset MS (2016, May 9) retrieved 5 July 2023 from <https://medicalxpress.com/news/2016-05-long-term-treatment-benefit-relapse-onset-ms.html>

This document is subject to copyright. Apart from any fair dealing for the purpose of private study or research, no part may be reproduced without the written permission. The content is provided for information purposes only.