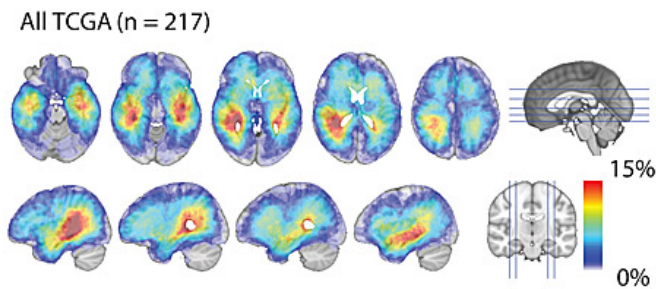


Clinical study suggests the origin of glioblastoma subtypes

5 May 2016



Glioblastoma density maps reveal that glioblastoma tend to occur in proximity to the subventricular zone. Credit: UC San Diego Health

Researchers at University of California San Diego School of Medicine have demonstrated that distinct types of glioblastoma, the most common form of brain cancer in adults, tend to develop in different regions of the brain. This finding provides an explanation for how the same cancer-causing mutation can give rise to different types of brain malignancies. Results of the study were published in the May 2, 2016 online edition of *Oncotarget*.

"It is now well-documented that cancers that look the same under the microscope actually contain different genetic changes, or mutations, and respond differently to therapy," said Clark Chen, MD, PhD, senior author and vice-chair of research and academic development in the Division of Neurosurgery at UC San Diego School of Medicine. "What remains unclear is how the exact, same mutation can give rise to different subtypes of tumor."

To study this mystery, Chen's team developed a new computational method to define where different glioblastoma subtypes develop in the [brain](#). Using clinical images derived from 217 brain tumor patients, Chen's team discovered that proneural and neural glioblastoma subtypes tend

to occur closer to the center of the brain in a region called the subventricular zone (SVZ). In contrast, mesenchymal and classical glioblastoma subtypes tend to develop farther from this region.

The subventricular zone is a unique region of the brain where neural stem cells, which ultimately give rise to all cell types in the brain, reside. During brain development, these stem cells migrate outward from the center region. During this process, the [stem cells](#) transform into the dozen or so different cell types that compose the human brain.

"Our study suggests that if a cancer-causing mutation occurs in the [neural stem cell](#) population in the SVZ, it gives rise to the proneural or the neural glioblastoma subtype. On the other hand, if the same mutation occurs in a different cell population located farther away from the SVZ, it will give rise to other subtypes," said Chen.

Through a mouse model of glioblastoma developed by Lionel Chow, MD, PhD, a pediatric hematologist-oncologist at Cincinnati Children's Hospital, Chen's team was able to confirm this hypothesis. In Chow's model, all glioblastomas arise as a result of the same mutations. Nevertheless, the brain tumors that form closer to the SVZ tend to be proneural or neural subtypes, while tumors form farther from the SVZ tend to be classical or mesenchymal subtypes.

"Because glioblastoma subtypes respond differently to distinct therapies, subtype discrimination will be increasingly important," said Bob Carter, MD, PhD, chair of neurosurgery at UC San Diego Health. "Refinement of this non-invasive method for determining glioblastoma subtypes may achieve the goal of personalizing glioblastoma therapy without subjecting our patients to surgery."

Provided by University of California - San Diego

APA citation: Clinical study suggests the origin of glioblastoma subtypes (2016, May 5) retrieved 1 June 2021 from <https://medicalxpress.com/news/2016-05-clinical-glioblastoma-subtypes.html>

This document is subject to copyright. Apart from any fair dealing for the purpose of private study or research, no part may be reproduced without the written permission. The content is provided for information purposes only.