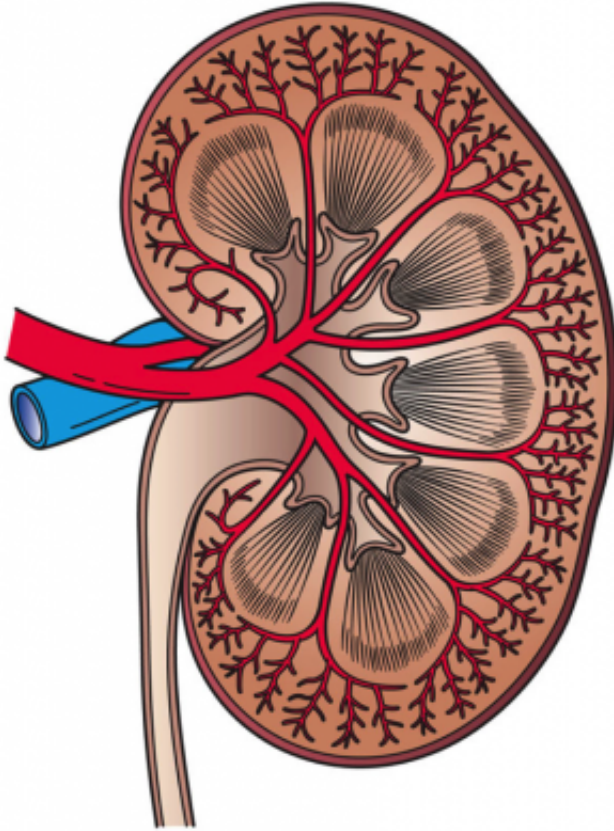


Female hormones may make women less susceptible to kidney failure than men

28 April 2016



This image shows a cross section of a kidney. Credit: Holly Fischer/Wikipedia

Female hormones may play a role in women's decreased risk of developing kidney failure relative to men, according to a study appearing in an upcoming issue of the *Journal of the American Society of Nephrology (JASN)*. The findings may be helpful for future attempts at safeguarding women's and men's kidney health in sex-specific ways.

Sex differences between men and women affect most, if not all, organ systems in the body, but there is a significant gap in knowledge of female physiology aside from organ functions involved in

reproduction. Regarding the kidneys, while international registries show that fewer women than men develop [kidney failure](#), the underlying causes are unknown.

To investigate, a team led by Judith Lechner, PhD and Thomas Seppi, PhD (Medical University of Innsbruck, in Austria) examined whether hormone changes due to the female menstrual cycle might affect the health of [kidney cells](#). For this purpose, urinary samples from healthy women of reproductive age were collected daily and analyzed for menstrual cycle-associated changes of different proteins. Specifically, the researchers measured 2 enzymes—fructose-1,6-bisphosphatase and glutathione-S-transferase-alpha—that are found in proximal tubular cells, the most populous cell type in the kidney. When proximal tubular cells are damaged, these enzymes are released into the urine, making them important clinical markers for [kidney injury](#).

The investigators detected transient increases of fructose-1,6-bisphosphatase and glutathione-S-transferase-alpha correlating with specific phases of the female reproductive hormone cycle, namely ovulation and menses. "This result suggests that cyclical changes of female hormones might affect kidney cell health, potentially providing women with an increased resistance against [kidney damage](#)," said Dr. Lechner. "It is conceivable that recurring changes of sex hormone levels, as brought about by the natural menstrual cycle, might be involved in periodic tissue re-modeling not only in reproductive organs, but to a certain extent in the kidneys as well."

Understanding the mechanisms that might be responsible for women's lower susceptibility to kidney failure may help researchers design better [kidney](#)-related therapies for women and men.

More information: *Journal of the American Society of Nephrology*, [DOI](#):

[10.1681/ASN.2015080886](https://doi.org/10.1681/ASN.2015080886)

Provided by American Society of Nephrology

APA citation: Female hormones may make women less susceptible to kidney failure than men (2016, April 28) retrieved 22 November 2022 from <https://medicalxpress.com/news/2016-04-female-hormones-women-susceptible-kidney.html>

This document is subject to copyright. Apart from any fair dealing for the purpose of private study or research, no part may be reproduced without the written permission. The content is provided for information purposes only.