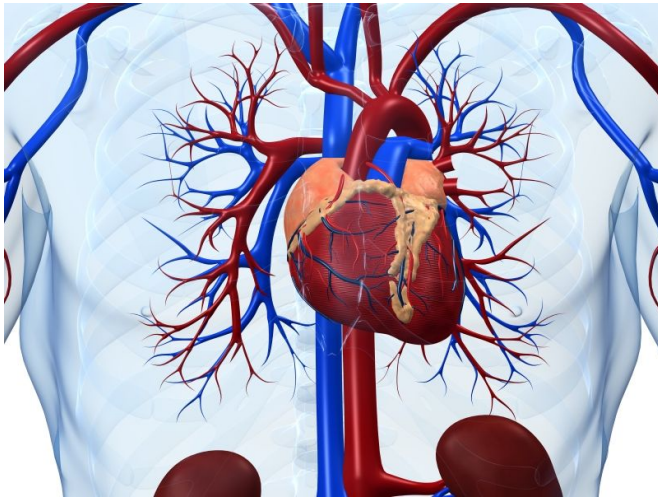


# Worse prognosis for heart failure patients with low osmolality

21 March 2016



heart failure hospitalization. Low discharge osmolality correlated with higher all-cause mortality and the composite end point (both  $P = 0.04$ ). In the low osmolality group, a 15 mOsm/kg decrease in osmolality predicted higher all-cause mortality and the composite end point (hazard ratios, 1.61 and 1.37, respectively), after risk adjustment. These correlations were not observed for patients with normal or high osmolality.

"In conclusion, low discharge serum osmolality was independently predictive of worse post-discharge mortality and readmission," the authors write.

Several authors disclosed financial ties to biopharmaceutical companies, including Otsuka, which funded the EVEREST trial.

**More information:** [Abstract](#)

[Full Text \(subscription or payment may be required\)](#)

(HealthDay)—For patients with heart failure and reduced ejection fraction, low osmolality at discharge is associated with worse all-cause mortality and readmission, according to research published in the April 1 issue of *The American Journal of Cardiology*.

Muthiah Vaduganathan, M.D., M.P.H., from the Brigham and Women's Hospital Heart and Vascular Center in Boston, and colleagues conducted a [post hoc analysis](#) of data from the Efficacy of Vasopressin Antagonism in Heart Failure: Outcome Study with Tolvaptan (EVEREST) trial. Serum osmolality measures were assessed at discharge in 3,744 patients hospitalized for [heart failure](#) and reduced ejection fraction. Patients were followed for a median of 9.9 months. Patients were divided into low, normal, and high osmolality.

The researchers observed a nonlinear correlation for discharge osmolality and all-cause [mortality](#) and the composite of [cardiovascular mortality](#) or

Copyright © 2016 [HealthDay](#). All rights reserved.

APA citation: Worse prognosis for heart failure patients with low osmolality (2016, March 21) retrieved 3 May 2021 from <https://medicalxpress.com/news/2016-03-worse-prognosis-heart-failure-patients.html>

*This document is subject to copyright. Apart from any fair dealing for the purpose of private study or research, no part may be reproduced without the written permission. The content is provided for information purposes only.*