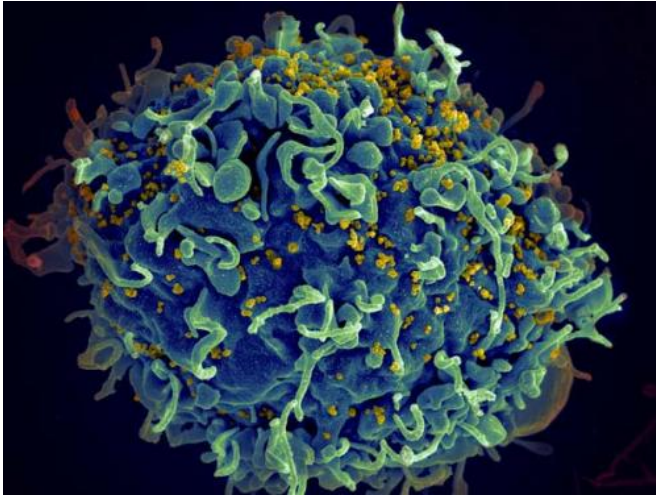


PrEP is not linked to greater risk for depression

19 June 2015



HIV, the AIDS virus (yellow), infecting a human immune cell. Credit: Seth Pincus, Elizabeth Fischer and Austin Athman, National Institute of Allergy and Infectious Diseases, National Institutes of Health.

A new paper out of the iPrEx study—a randomized, placebo-controlled trial of daily oral HIV pre-exposure prophylaxis (PrEP) in men and transgender women who have sex with men—reported no link between taking Truvada for oral PrEP and experiencing depression.

During the iPrEx study, [depression](#) was the most frequently reported adverse event. As the use of Truvada for HIV prevention increases, it is important to understand the impact of PrEP on depression and whether depression can hinder PrEP.

"We've shown Truvada to be safe and effective for HIV prevention," says senior author Robert Grant, MD, MPH, a senior investigator at the Gladstone Institutes. "Because previous studies suggested a link between certain antiretroviral therapies and depression, we wanted to explore whether or not

there was an increased risk for psychosocial health problems associated with PrEP."

The current study, published in *AIDS and Behavior*, systematically examined whether there was a causative link between Truvada and depression. Comparing scores on a depression and a suicidal ideation scale administered during the study, the researchers found there was no difference in depression or suicidality between participants who received Truvada or placebo. There was also no difference in the number of depression-related adverse events between the two study groups. In addition, there was no evidence that PrEP was less efficacious in depressed participants.

However, half of all participants in the iPrEx study, regardless of the study arm they were in, reported depression scores over the threshold for clinically significant depression. It is well documented that rates of depression are substantially higher among gay men and transgender women who have sex with men.

"Depressive symptoms are associated with sexual practices that increase risk for HIV acquisition," said first author Patricia Defechereux, PhD, a senior research associate at the Gladstone Institutes. "The additional protection conferred by PrEP during episodes of depression could avert infections during these especially vulnerable times."

More information: link.springer.com/article/10.1007/s10461-015-1082-2

Provided by Gladstone Institutes

APA citation: PrEP is not linked to greater risk for depression (2015, June 19) retrieved 6 November 2022 from <https://medicalxpress.com/news/2015-06-prep-linked-greater-depression.html>

This document is subject to copyright. Apart from any fair dealing for the purpose of private study or research, no part may be reproduced without the written permission. The content is provided for information purposes only.