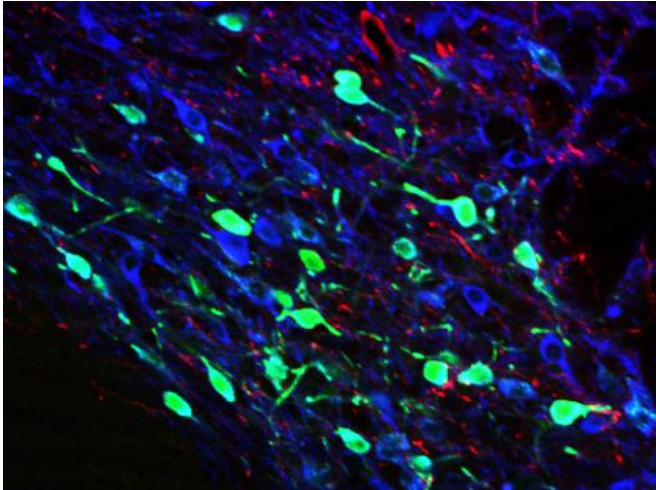


# Researchers confirm important brain reward pathway

12 November 2014



A partial view of labelled neurons in reward circuitry that starts in dorsal raphe (pictured - ventral tegmental area). Credit: Image courtesy Dr. Marisela Morales, NIDA IRP

Details of the role of glutamate, the brain's excitatory chemical, in a drug reward pathway have been identified for the first time.

This discovery in rodents - published today in *Nature Communications* - shows that stimulation of glutamate neurons in a specific brain region (the dorsal raphe [nucleus](#)) leads to activation of dopamine-containing neurons in the brain's [reward](#) circuit (dopamine reward system).

Dopamine is a neurotransmitter present in regions of the brain that regulate movement, emotion, motivation, and feelings of pleasure. Glutamate is a neurotransmitter whose receptors are important for neural communication, memory formation, and learning. The research was conducted at the Intramural Research Program (IRP) of the National Institute on Drug Abuse (NIDA), which is part of the National Institutes of Health.

The research focused on the dorsal raphe nucleus, which has long been a brain region of interest to drug abuse researchers, since nerve cells in this area connect to part of the dopamine reward system. Many of the pathways are rich in serotonin, a neurotransmitter linked to mood regulation. Even though electrical stimulation of the dorsal raphe nucleus promotes reward-related behaviors, drugs that increase serotonin have low abuse potential. As a result, this region of the brain has always presented a seeming contradiction, since it is involved in drug reward but is also abundant in serotonin - a chemical not known for a role in drug reinforcement. This has led researchers to theorize that another neurotransmitter may be responsible for the role that the dorsal raphe nucleus plays in reward.

"We now have strong evidence of a reward pathway that starts with stimulation of glutamate neurons in the dorsal raphe nucleus and ends in activation of the dopamine [reward system](#)," said NIDA Director Dr. Nora D. Volkow. "These findings help us better understand the brain's reward circuitry and opens up new avenues of research into the neurobiology of drug addiction."

In these rodent models, researchers used special tracers and labelling compounds to confirm that this circuit in the reward pathway begins with glutamate cells in the dorsal raphe nucleus that connect to dopamine cells in the ventral tegmental area, which in turn travel to the nucleus accumbens, a brain structure linked to motivation, pleasure, and reward. After verifying the pathway, investigators used optogenetic techniques (using light to control activity of modified cells) and chemical blockers to confirm that glutamate, not serotonin, is responsible for activating this reward circuitry.

"This glutamatergic pathway is the first fully characterized link between electrically stimulated reward circuitry and the dopamine system on which it depends," said Dr. Marisela Morales, NIDA IRP

scientist and senior author on the paper. "The discovery of this specific brain pathway opens new avenues to examine its participation in a variety of disorders related to motivation."

Provided by NIH/National Institute on Drug Abuse

APA citation: Researchers confirm important brain reward pathway (2014, November 12) retrieved 4 May 2021 from <https://medicalxpress.com/news/2014-11-important-brain-reward-pathway.html>

*This document is subject to copyright. Apart from any fair dealing for the purpose of private study or research, no part may be reproduced without the written permission. The content is provided for information purposes only.*