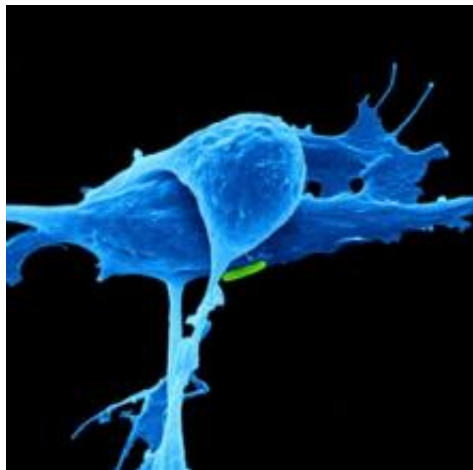


# Cell surface sugars can promote or inhibit cancer depending upon stage

15 September 2014



During cancer development, tumor cells decorate their surfaces with sugar compounds called glycans that are different from those found on normal, healthy cells. In the Sept. 15 online Early Edition of the *Proceedings of the National Academy of Sciences (PNAS)*, researchers at the University of California, San Diego School of Medicine report that sialic acids at the tips of these cancer cell glycans are capable of engaging with immune system cells and changing the latter's response to the tumor – for good and bad.

"These cell surface glycans can promote or inhibit [cancer progression](#), depending upon the stage of the disease," said principal investigator Ajit Varki, MD, Distinguished Professor of Medicine and Cellular and Molecular Medicine. "Our findings underscore the complexity of cancer and the consequent challenges in conquering it. The [immune system](#) may be a double-edged sword in cancer, tumor-promoting or tumor-inhibiting, depending upon circumstances."

Specifically, the researchers found that receptors called siglecs on subsets of neutrophils and

macrophages (two types of immune cell) can bind to sialic acids on the surface of [tumor cells](#).

Depending upon the stage of cancer and the tumor model used, the scientists reported that interaction between immune cell siglecs and tumor cell sialic acids produced opposite outcomes.

"During initial stages of growth, [cancer cells](#) appear to protect themselves from extermination by neutrophils by engaging siglecs via sialic acid-capped glycans," said Varki, who is also a faculty member of the UC San Diego Moores Cancer Center. "But once the tumor was established, further growth was inhibited by engagement of siglecs on macrophages."

The findings follow upon research by Varki and colleagues published earlier this year in *PNAS* that showed anti-tumor antibodies also behave contrarily. Low concentrations of antibodies can support cancer growth, but higher concentrations may inhibit it.

"The fact that the immune system can exert a promoting or inhibiting effect on cancer progression, depending on the situation and stage of disease, has importance for designing clinical trials with drugs that target the immune system," said first author Heinz Läubli, MD, PhD.

For example, siglecs might prove viable drug targets for preventing early cancer progression. Study co-author Ann Schwartz, PhD, MPH, of the Karmanos Cancer Institute at Wayne State University School of Medicine in Detroit investigated 332 patients with lung [cancer](#) to assess whether they had a natural siglec variant that reduced binding to tumor cell surface sialic acids. Such patients have a greater chance for survival after two years, but the effect diminishes and disappears later.

"We need more studies to understand the mechanisms in siglecs mediating the switch

between tumor-promoting and [tumor](#)-inhibiting before possible therapies can be developed," Varki said.

**More information:** Engagement of myelomonocytic Siglecs by tumor-associated ligands modulates the innate immune response to cancer, *PNAS*, 2014.

[www.pnas.org/cgi/doi/10.1073/pnas.1409580111](http://www.pnas.org/cgi/doi/10.1073/pnas.1409580111)

Provided by University of California - San Diego

APA citation: Cell surface sugars can promote or inhibit cancer depending upon stage (2014, September 15) retrieved 4 May 2021 from <https://medicalxpress.com/news/2014-09-cell-surface-sugars-inhibit-cancer.html>

*This document is subject to copyright. Apart from any fair dealing for the purpose of private study or research, no part may be reproduced without the written permission. The content is provided for information purposes only.*