

# Neuroscientists reverse memories' emotional associations

August 27 2014, by Anne Trafton

---

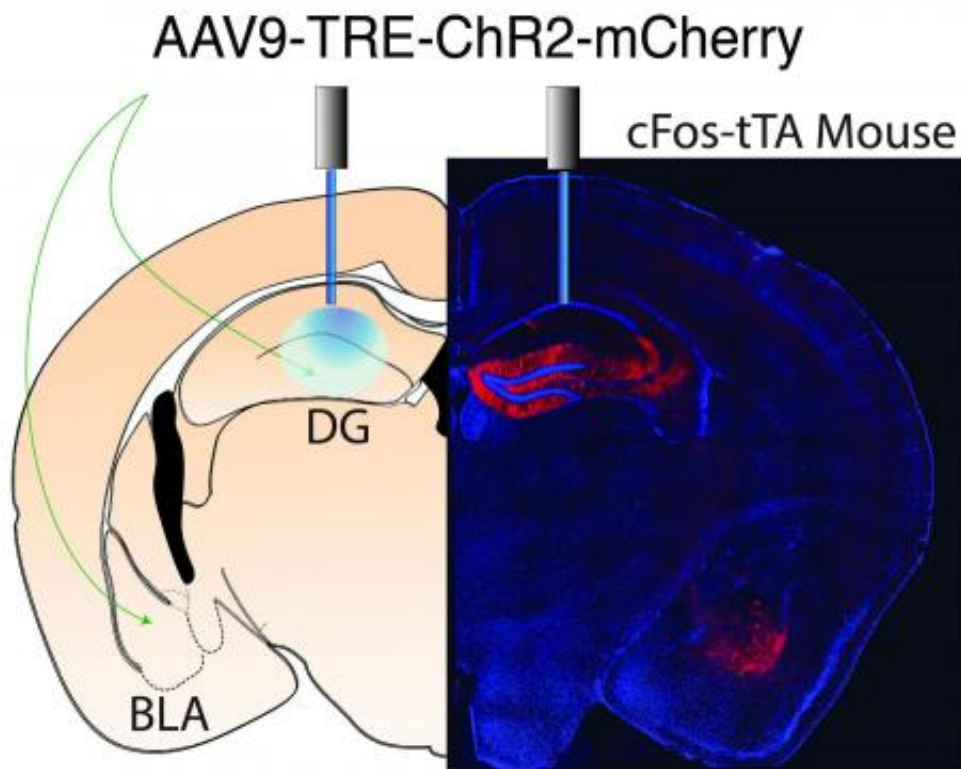


Image depicts the injection sites and the expression of the viral constructs in the two areas of the brain studied (Dentate Gyrus of the hippocampus and Basolateral Amygdala) Credit: Redondo et al.

Most memories have some kind of emotion associated with them:  
Recalling the week you just spent at the beach probably makes you feel

happy, while reflecting on being bullied provokes more negative feelings.

A new study from MIT neuroscientists reveals the brain circuit that controls how memories become linked with positive or negative emotions. Furthermore, the researchers found that they could reverse the emotional association of specific memories by manipulating brain [cells](#) with optogenetics—a technique that uses light to control neuron activity.

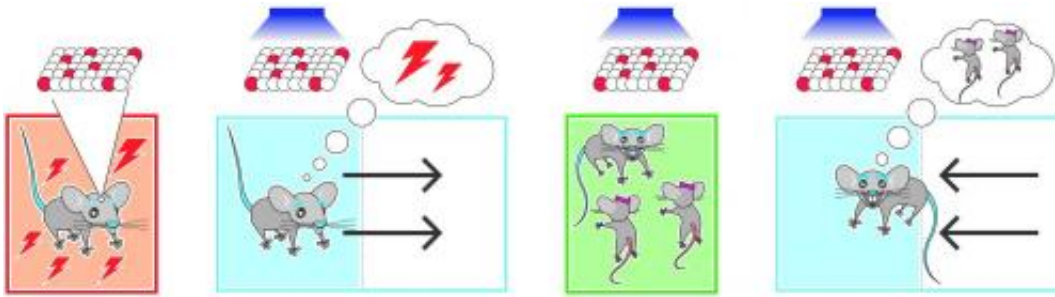
The findings, described in the August 28th issue of *Nature*, demonstrated that a neuronal circuit connecting the hippocampus and the amygdala plays a critical role in associating emotion with memory. This circuit could offer a target for new drugs to help treat conditions such as [post-traumatic stress disorder](#), the researchers say.

"In the future, one may be able to develop methods that help people to remember positive memories more strongly than negative ones," says Susumu Tonegawa, the Picower Professor of Biology and Neuroscience, director of the RIKEN-MIT Center for Neural Circuit Genetics at MIT's Picower Institute for Learning and Memory, and senior author of the paper.

The paper's lead authors are Roger Redondo, a Howard Hughes Medical Institute postdoc at MIT, and Joshua Kim, a graduate student in MIT's Department of Biology.

## **Shifting memories**

Memories are made of many elements, which are stored in different parts of the brain. A memory's context, including information about the location where the event took place, is stored in cells of the hippocampus, while emotions linked to that memory are found in the amygdala.



The cartoon summarizes one of the main findings. In the fear to reward experiment, the first step involved the labelling of the neurons, in the Dentate Gyrus of the hippocampus, active during the formation of a fear memory. Step 2 reveals that driving such neurons produces an aversive response as the animal leaves the zone of the test arena where the laser becomes active. During the induction protocol, in step 3, the same neurons are reactivated while the test mouse spends time interacting with two female mice. In step 4, again the same neurons are activated but this time the test mouse increases the time that it spends in the zone of the test arena where the laser comes on. Credit: Collective Next and Roger Redondo

Previous research has shown that many aspects of memory, including emotional associations, are malleable. Psychotherapists have taken advantage of this to help patients suffering from depression and post-traumatic stress disorder, but the neural circuitry underlying such malleability is not known.

In this study, the researchers set out to explore that malleability with an experimental technique they recently devised that allows them to tag neurons that encode a specific memory, or engram. To achieve this, they label hippocampal cells that are turned on during memory formation with a light-sensitive protein called channelrhodopsin. From that point on, any time those cells are activated with light, the [mice](#) recall the memory encoded by that group of cells.

Last year, Tonegawa's lab used this technique to implant, or "incept," false memories in mice by reactivating engrams while the mice were undergoing a different experience. In the new study, the researchers wanted to investigate how the context of a memory becomes linked to a particular emotion. First, they used their engram-labeling protocol to tag neurons associated with either a rewarding experience (for male mice, socializing with a female mouse) or an unpleasant experience (a mild electrical shock). In this first set of experiments, the researchers labeled [memory cells](#) in a part of the hippocampus called the dentate gyrus.

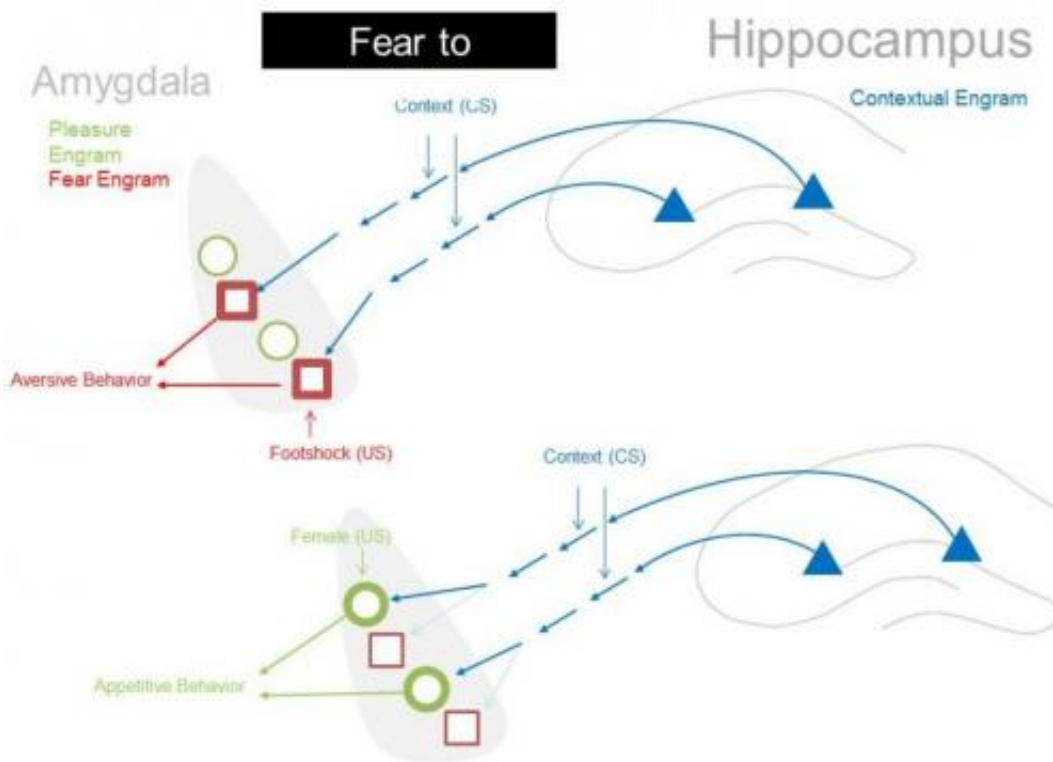
Two days later, the mice were placed into a large rectangular arena. For three minutes, the researchers recorded which half of the arena the mice naturally preferred. Then, for mice that had received the fear conditioning, the researchers stimulated the labeled cells in the dentate gyrus with light whenever the mice went into the preferred side. The mice soon began avoiding that area, showing that the reactivation of the fear memory had been successful.

The reward memory could also be reactivated: For mice that were reward-conditioned, the researchers stimulated them with light whenever they went into the less-preferred side, and they soon began to spend more time there, recalling the pleasant memory.

A couple of days later, the researchers tried to reverse the mice's emotional responses. For male mice that had originally received the fear conditioning, they activated the memory cells involved in the fear memory with light for 12 minutes while the mice spent time with [female mice](#). For mice that had initially received the reward conditioning, memory cells were activated while they received mild electric shocks.

Next, the researchers again put the mice in the large two-zone arena. This time, the mice that had originally been conditioned with fear and had avoided the side of the chamber where their hippocampal cells were

activated by the laser now began to spend more time in that side when their hippocampal cells were activated, showing that a pleasant association had replaced the fearful one. This reversal also took place in mice that went from reward to fear conditioning.



The diagram depicts the main finding of the paper that the contextual information encoded by the hippocampus can freely associate to appetitive or aversive behavioral responses driven by amygdala neurons. Credit: Joshua Kim & Roger Redondo

### Altered connections

The researchers then performed the same set of experiments but labeled memory cells in the basolateral amygdala, a region involved in

processing emotions. This time, they could not induce a switch by reactivating those cells—the mice continued to behave as they had been conditioned when the memory cells were first labeled.

This suggests that emotional associations, also called valences, are encoded somewhere in the neural circuitry that connects the dentate gyrus to the amygdala, the researchers say. A fearful experience strengthens the connections between the hippocampal engram and fear-encoding cells in the amygdala, but that connection can be weakened later on as new connections are formed between the hippocampus and amygdala cells that encode positive associations.

"That plasticity of the connection between the hippocampus and the amygdala plays a crucial role in the switching of the valence of the memory," Tonegawa says.

These results indicate that while [dentate gyrus](#) cells are neutral with respect to emotion, individual amygdala cells are precommitted to encode fear or reward [memory](#). The researchers are now trying to discover molecular signatures of these two types of amygdala cells. They are also investigating whether reactivating pleasant memories has any effect on depression, in hopes of identifying new targets for drugs to treat depression and post-traumatic stress disorder.

**More information:** Bidirectional switch of the valence associated with a hippocampal contextual memory engram, *Nature*, [dx.doi.org/10.1038/nature13725](https://doi.org/10.1038/nature13725)

Provided by Massachusetts Institute of Technology

Citation: Neuroscientists reverse memories' emotional associations (2014, August 27) retrieved

19 December 2023 from

<https://medicalxpress.com/news/2014-08-neuroscientists-reverse-memories-emotional-associations.html>

This document is subject to copyright. Apart from any fair dealing for the purpose of private study or research, no part may be reproduced without the written permission. The content is provided for information purposes only.