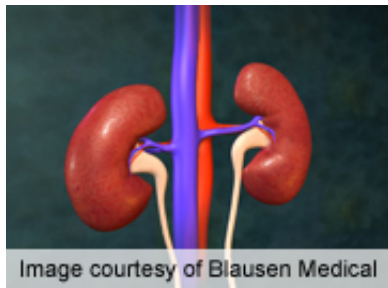


# Smoking adversely impacts renal cell carcinoma survival

27 February 2014



For patients with clear cell renal cell carcinoma, smoking exposure adversely impacts cancer-specific survival and increases the risk of death from another cause, according to a study published in the March issue of *The Journal of Urology*.

(HealthDay)—For patients with clear cell renal cell carcinoma, smoking exposure adversely impacts cancer-specific survival and increases the risk of death from another cause, according to a study published in the March issue of *The Journal of Urology*.

Behfar Ehdai, M.D., M.P.H., from the Memorial Sloan-Kettering Cancer Center in New York City, and colleagues examined the impact of [smoking](#) exposure on cancer-specific survival in a cohort of 1,625 patients with clear cell [renal cell carcinoma](#). Data were collected from patients treated with surgery from 1995 through 2012 and the correlations between smoking status with advanced disease and cancer-specific survival were determined during a median follow-up of 4.5 years.

The researchers found that the prevalence of current, former, and never smoking was 16, 30, and 54 percent at diagnosis. A smoking history of 20 pack-years or greater was associated with a significantly increased risk of advanced disease on univariable analysis (odds ratio, 1.43). After adjustment for age and gender, the correlation was

not independent. On multivariable competing risks analysis, pathological stage and Fuhrman grade adversely affected cancer-specific survival. On multivariable analysis, the correlation between smoking and cancer-specific survival did not achieve statistical significance (hazard ratio, 1.5; 95 percent confidence interval, 0.89 to 2.52), although there was a trend toward an adverse effect of smoking. The risk of death from another cause was significantly higher for current smokers than never smokers (hazard ratio, 1.93).

"Treatment plans to promote [smoking cessation](#) in survivorship programs are recommended for these patients," the authors write.

**More information:** [Abstract](#)  
[Full Text \(subscription or payment may be required\)](#)

Copyright © 2014 [HealthDay](#). All rights reserved.

APA citation: Smoking adversely impacts renal cell carcinoma survival (2014, February 27) retrieved 1 July 2022 from <https://medicalxpress.com/news/2014-02-adversely-impacts-renal-cell-carcinoma.html>

*This document is subject to copyright. Apart from any fair dealing for the purpose of private study or research, no part may be reproduced without the written permission. The content is provided for information purposes only.*