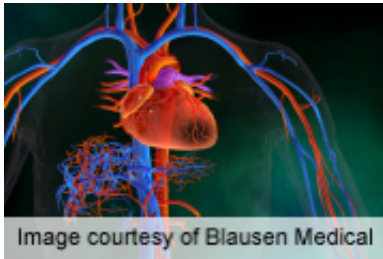


Metformin cuts cardio events in high-risk type 2 diabetes

8 January 2013



Metformin therapy significantly reduces cardiovascular events in high-risk patients with type 2 diabetes compared to treatment with glipizide, according to a study published online Dec. 10 in *Diabetes Care*.

(HealthDay)—Metformin therapy significantly reduces cardiovascular events in high-risk patients with type 2 diabetes compared to treatment with glipizide, according to a study published online Dec. 10 in *Diabetes Care*.

Jie Hong, M.D., from the Shanghai Jiao Tong University School of Medicine, and colleagues conducted a multicenter trial in which 304 patients with type 2 diabetes with [coronary artery disease](#) (mean age, 63.3 years) were randomized to receive glipizide (30 mg daily) or metformin (1.5 g daily) for three years. The composite end point was times to recurrent [cardiovascular events](#), including death from a cardiovascular cause, death from any cause, nonfatal [myocardial infarction](#), nonfatal stroke, or arterial revascularization.

The researchers found that both groups achieved a significant reduction in the level of glycated hemoglobin (7.1 percent in the glipizide group and 7.0 percent in the metformin group). Ninety-one participants developed 103 primary end points over a median follow-up of five years. The adjusted hazard ratio for the composites of cardiovascular events among the patients that received metformin versus glipizide was 0.54. There was no significant difference between the two groups for secondary

end points and adverse events.

"Treatment with metformin for three years substantially reduced major cardiovascular events in a median follow-up of 5.0 years compared with glipizide," the authors write.

The glipizide and metformin were provided by the Xinyi Pharmaceutical Co.

More information: [Abstract](#)
[Full Text \(subscription or payment may be required\)](#)

Copyright © 2012 [HealthDay](#). All rights reserved.

APA citation: Metformin cuts cardio events in high-risk type 2 diabetes (2013, January 8) retrieved 12 October 2022 from <https://medicalxpress.com/news/2013-01-metformin-cardio-events-high-risk-diabetes.html>

This document is subject to copyright. Apart from any fair dealing for the purpose of private study or research, no part may be reproduced without the written permission. The content is provided for information purposes only.