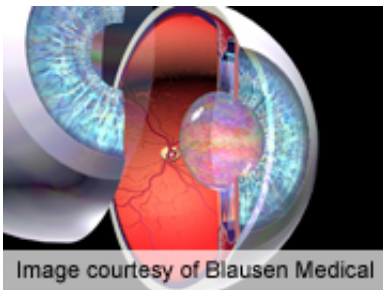


Open-angle glaucoma up 22 percent in last 10 years

January 1 2013



The prevalence of open-angle glaucoma has increased more than 20 percent in the last 10 years and currently affects more than 2.7 million Americans age 40 years and older, according to a report from Prevent Blindness America and the National Eye Institute.

(HealthDay)—The prevalence of open-angle glaucoma has increased more than 20 percent in the last 10 years and currently affects more than 2.7 million Americans age 40 years and older, according to a report from Prevent Blindness America and the National Eye Institute.

Researchers from Prevent Blindness America, and other leading vision and [eye health](#) groups have declared January National Glaucoma Awareness Month in an effort to educate the public on glaucoma. Noting that symptoms develop very gradually, glaucoma can damage [central vision](#) if left untreated over time.

According to the report, more than 2.7 million Americans age 40 and

older have open-angle glaucoma, an increase of more than 22 percent from 10 years ago. Risk factors for glaucoma include age, family history, nearsightedness, eye injury and surgery, use of steroids, and race. Compared with whites, blacks are five times more likely to have glaucoma and four times more likely to go blind from it. Compared with other groups, Hispanics are more likely to develop glaucoma after age 60. Statins may be effective in the early stages of disease or for prevention, with the risk of glaucoma reduced by 8 percent for hyperlipidemia patients who took statins continuously for two years.

"As we begin 2013, we hope that everyone's New Year's resolution will be to make their eye health a priority and schedule an [eye exam](#)," Hugh R. Parry, president and [chief executive officer](#) of Prevent Blindness America, said in a statement. "Through early detection and treatment, we can help lessen the effects of glaucoma and other eye diseases on vision."

More information: [More Information](#)

Copyright © 2012 [HealthDay](#). All rights reserved.

Citation: Open-angle glaucoma up 22 percent in last 10 years (2013, January 1) retrieved 1 January 2023 from <https://medicalxpress.com/news/2013-01-open-angle-glaucoma-percent-years.html>

<p>This document is subject to copyright. Apart from any fair dealing for the purpose of private study or research, no part may be reproduced without the written permission. The content is provided for information purposes only.</p>
--