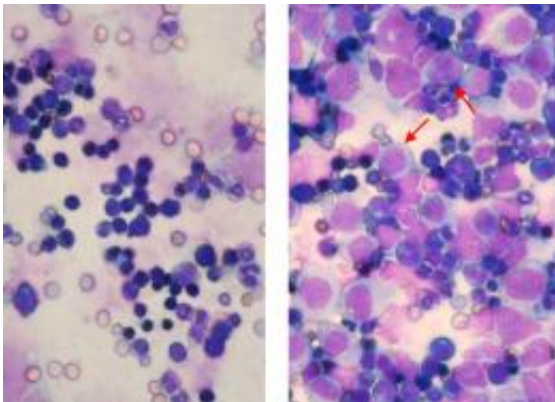


Cells of Aggressive Leukemia Hijack Normal Protein to Grow

February 25 2010



Knockdown of normal MLL gene in human leukemia cells reduces leukemic infiltration in mouse bone marrow (left), compared with heavy leukemic infiltration in marrow from leukemia cells with normal MLL gene (right). Arrows denote leukemic cells. Credit: Peter Blessington, University of Pennsylvania School of Medicine

(PhysOrg.com) -- Researchers have found that one particularly aggressive type of blood cancer, mixed lineage leukemia (MLL), has an unusual way to keep the molecular motors running. The cancer cells rely on the normal version of an associated protein to stay alive.

MLL happens when a piece of chromosome 11 breaks off at the normal MLL-associated gene. The broken gene attaches itself to another chromosome, resulting in a fusion protein that eventually causes uncontrolled growth of [blood cells](#).

The lab of senior author Xianxin Hua, MD, PhD, an associate professor of Cancer Biology at the University of Pennsylvania School of Medicine, found that this runaway growth triggered by the fusion protein is blocked when the gene for the normal protein is deleted from [leukemia](#) cells. This indicates that the normal protein is required for MLL to proliferate. The findings appear in the current issue of *Cancer Cell*, and are featured on the cover. Hua is also an associate investigator of the Abramson Family Cancer Research Institute.

The chromosomal breakages and reattachments of MLL, called translocations, are common in many aggressive leukemias. Children with mixed lineage leukemia have a poor treatment outlook because they do not respond well to standard therapies for other types of leukemia, and they often suffer from early relapse after chemotherapy.

MLL translocations come in a variety of types, causing the fusion of the normal gene with one of over 60 other genes on other chromosomes known to work in human leukemias. The fusion protein triggers leukemia, partly through modifying chromatin, a DNA-protein complex.

The researchers also discovered that the normal MLL protein cooperates with the [fusion proteins](#) via chemical modifications to chromosomes, which regulate what genes should be turned on or off; by increasing survival of leukemia cells; and by maintaining leukemia [stem cells](#).

"This research not only uncovers the crucial role of a normal protein key to the development of MLL, but also how the [cancer cells](#) stay alive in the first place," says Hua. The unraveling of the new, yet little-anticipated, molecular player behind MLL points to the normal MLL gene as a potential target for new therapies, partly through repressing leukemia stem cells.

Building on this discovery, Hua's team will further investigate whether

mixed lineage [leukemia cells](#) are particularly "addicted" to normal MLL protein, a non-oncogene, in their growth and survival and whether normal MLL proteins specifically cooperate with other factors to sustain leukemia stem cells, with the hope of searching for an Achille's heel of this aggressive leukemia.

Provided by University of Pennsylvania School of Medicine

Citation: Cells of Aggressive Leukemia Hijack Normal Protein to Grow (2010, February 25) retrieved 1 January 2023 from <https://medicalxpress.com/news/2010-02-cells-aggressive-leukemia-hijack-protein.html>

This document is subject to copyright. Apart from any fair dealing for the purpose of private study or research, no part may be reproduced without the written permission. The content is provided for information purposes only.