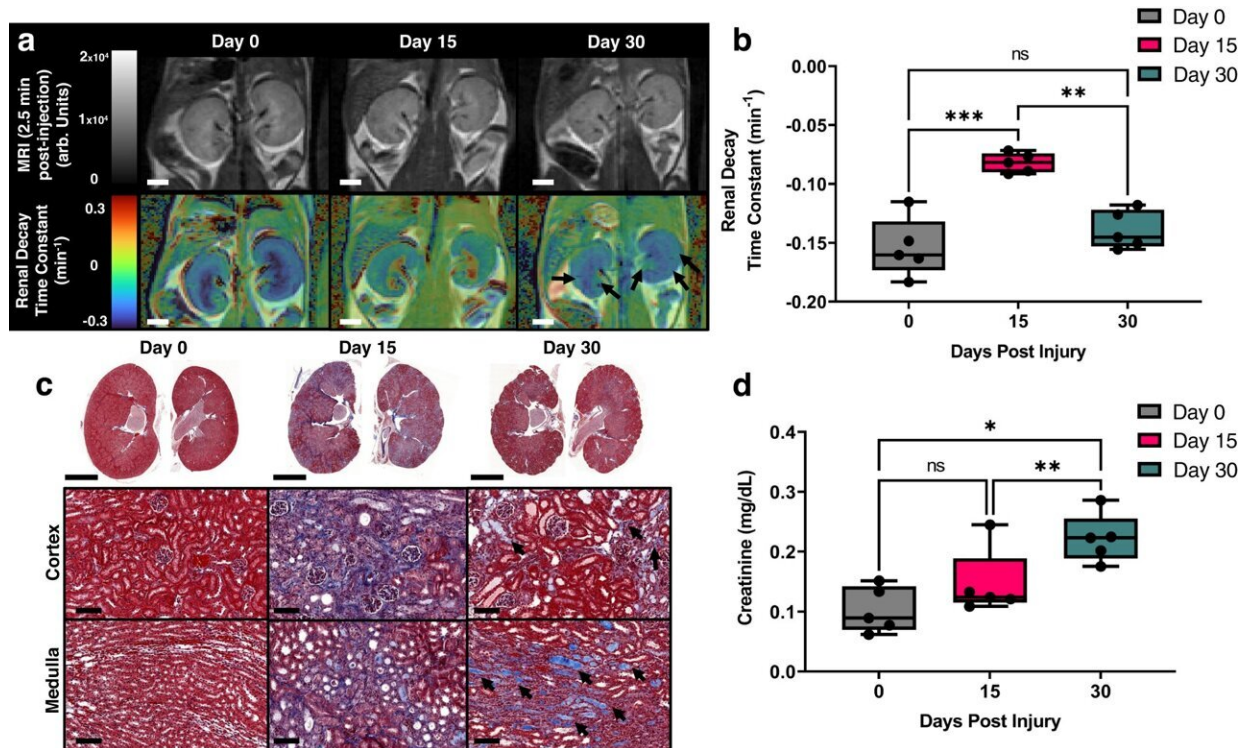


New kidney MRI dye promises more accurate, personalized mapping

July 13 2023



Glucoverdazyl-enhanced DCE-MRI of folic acid-induced nephropathy. **a** T₁-weighted images of kidneys at $t = 2.5$ min post-injection (*top*) and RDTC maps (*bottom*). The white scalebar represents 2 mm. **b** RDTC values for kidneys at each post-injury time point. Data are presented as box-and-whisker plots of the single average RDTC value from both kidneys of each mouse ($n = 5$). ** $p = 0.004$ and *** $p = 0.001$. **c** Representative histology selected from one of the five paired mouse kidneys (*top*) with enlargements of the cortical or medullary regions (*bottom*) stained by PAS. The top black scalebar represents 6 mm and the bottom black scalebar represents 100 μm. Black arrows indicate positive histological staining for fibrotic areas, represented by a light blue color. **d** Serum

creatinine levels of FAN mice at each post-injury time point ($n = 5$). $*p = 0.025$ and $**p = 0.004$. Statistical analysis was done by repeated measures two-way ANOVA followed by a Tukey post-hoc test. In all boxplots, whiskers are drawn from the minimum to maximum values, box bounds represent the interquartile range, and the line within the box represents the median. Credit: *Nature Communications* (2023). DOI: 10.1038/s41467-023-39720-x

In a world first, University of Ottawa scientists have introduced a metal-free MRI dye capable of mapping kidney function with unprecedented accuracy. This technique will modernize urology, allow for more personalized care and—ultimately—improve patient outcomes.

One in 10 Canadians suffer from some form of [kidney](#) disease. Current clinical methods for diagnosis rely on entering demographic and blood-based measurements into an equation to obtain an average value of kidney function for each patient. But this equation has a large error margin (around 20%) and doesn't pinpoint which kidney is diseased or where the problem lies.

By proposing a new dye that addresses the safety limitations associated with traditional MRI contrast agents, this study opens the door to personalized diagnosis and treatment of kidney diseases. The dye can help obtain spatial data and quantitative [glomerular filtration rate](#) measurements for both kidneys, surpassing the limitations of current clinical methods.

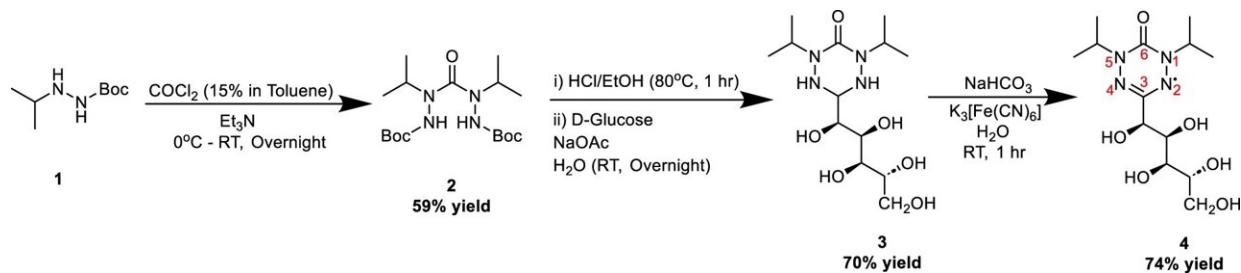
Looking for a safe, accurate dye

"In speaking with radiologists and nephrologists, it became clear that we needed to do better. Magnetic resonance imaging (MRI) provides excellent anatomical images but lacks suitable contrast agents for

reporting kidney function," says Adam J. Shuhendler, associate professor in the Department of Chemistry and Biomolecular Sciences of the University of Ottawa's Faculty of Science.

"Existing MRI dyes with heavy metal atoms can be toxic if kidney function is impaired. This study addresses this limitation by introducing a metal-free MRI dye that enables safe and effective mapping of kidney function, providing crucial information for personalized diagnosis and treatment planning."

The study, led by Nicholas D. Calvert, a Ph.D. student in chemistry and biomolecular sciences in Shuhendler's lab, was conducted with the help of Alexia Kirby, Mojmír Suchý, Peter Pallister, Aidan A. Torrens, Dylan Burger, Gerd Melkus and Nicola Schieda, from the Molecular Medicine Lab at the University of Ottawa and the preclinical MRI facility at the University of Ottawa Heart Institute.



Synthesis of glucoverdazyl (4). General synthetic scheme with yields used to synthesize glucoverdazyl. Red numbering on the final compound indicates numbering of the ring. Credit: *Nature Communications* (2023). DOI: 10.1038/s41467-023-39720-x

The research team discovered a promising scaffold called verdazyl, which served as the basis for the metal-free MRI dye. After optimizing

its synthesis, the dye was injected into healthy mice and imaged using MRI. The results demonstrated the efficacy and safety of the verdazyl dye, showing localization in the kidneys.

Mouse models of kidney disease were subsequently used to validate the imaging-based method for mapping glomerular filtration rate (GFR). The results were compared with histology and established methods for determining GFR in mice, further confirming the reliability of the MRI-based approach.

"Unlike the current equation-based method and traditional gadolinium-based MRI contrast agents, the novel dye enabled precise characterization of kidney function, even when one kidney was dysfunctional," says Shuhendler. "Remarkably, the study also revealed compensatory responses of healthy kidneys to their diseased counterparts."

Entering the era of personalized medicine

The introduction of the metal-free MRI dye represents a significant breakthrough in personalized urology. Using an accurate spatial map of [kidney function](#), clinicians can develop tailored diagnosis and treatment plans for patients with kidney disease. The dye also presents as a chemical platform, which Shuhendler and his team are currently exploiting to target other organs and disease for MRI-based functional assessment.

"With our new metal-free MRI dye, we have squarely entered the era of personalized medicine for kidney disease," concludes Shuhendler.

The research is published in the journal *Nature Communications*.

More information: Nicholas D. Calvert et al, Direct mapping of

kidney function by DCE-MRI urography using a tetrazinanone organic radical contrast agent, *Nature Communications* (2023). [DOI: 10.1038/s41467-023-39720-x](https://doi.org/10.1038/s41467-023-39720-x)

Provided by University of Ottawa

Citation: New kidney MRI dye promises more accurate, personalized mapping (2023, July 13) retrieved 20 November 2023 from <https://medicalxpress.com/news/2023-07-kidney-mri-dye-accurate-personalized.html>

This document is subject to copyright. Apart from any fair dealing for the purpose of private study or research, no part may be reproduced without the written permission. The content is provided for information purposes only.