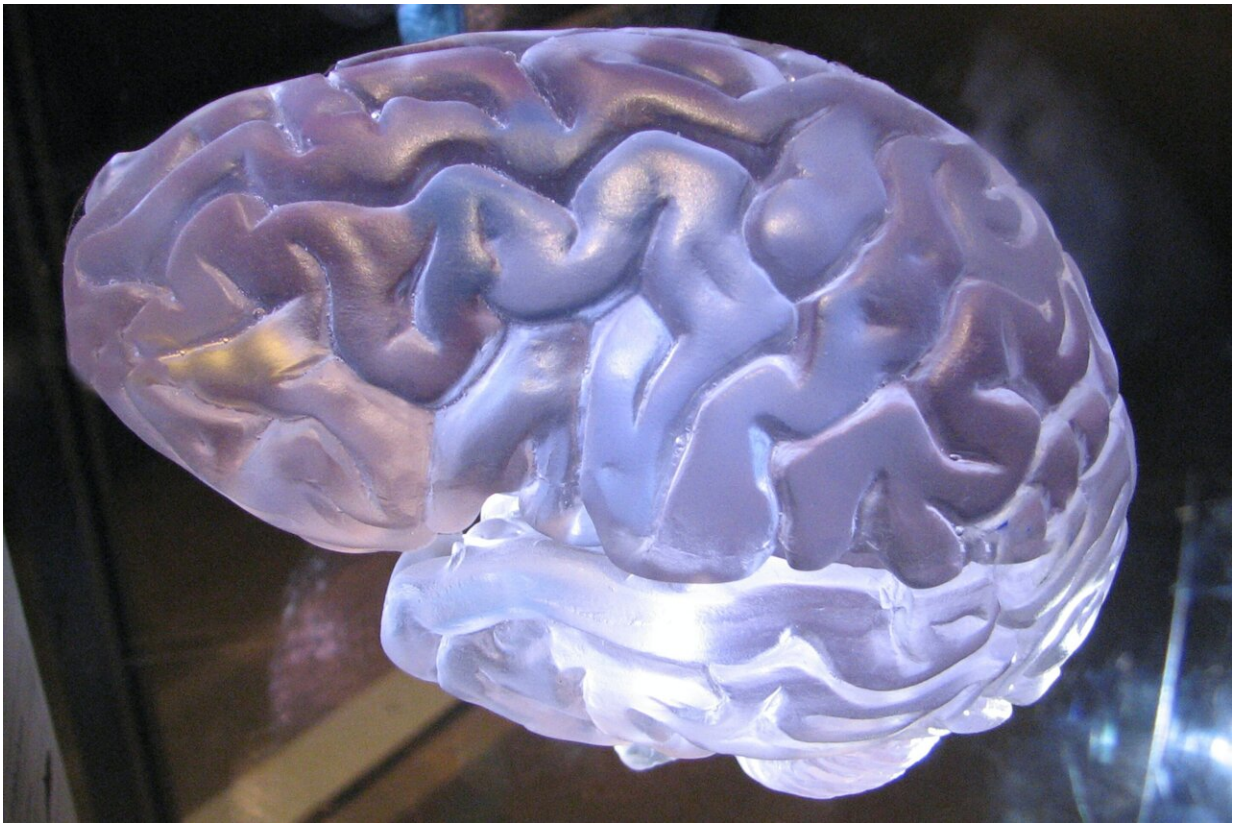


Advances in brain modeling open a path to digital twin approaches for brain medicine

March 27 2023, by Roberto Inchingolo



Credit: Unsplash/CC0 Public Domain

In the current edition of *The Lancet Neurology*, researchers of the Human Brain Project (HBP) present the novel clinical uses of advanced brain modeling methods. Computational brain modeling techniques that

integrate the measured data of a patient have been developed by researchers at AMU Marseille as part of the HBP. The models can be used as predictive tools to virtually test clinical hypotheses and strategies.

To create personalized [brain](#) models, the researchers use a [simulation technology](#) called The Virtual Brain (TVB), which HBP scientist Viktor Jirsa has developed together with collaborators. For each patient, the computational models are created from data of the individually measured anatomy, structural connectivity and brain dynamics.

The approach has been first applied in epilepsy, and a major clinical trial is currently ongoing. The TVB technology enables clinicians to simulate the spread of abnormal activity during [epileptic seizures](#) in a patient's brain, helping them to better identify the target areas. In January, the team had presented the [detailed methodology of the epilepsy work](#) on the cover of *Science Translational Medicine*.

In the new paper, the researchers expand on the concept and its potential applications in neuroscience. Their article in *The Lancet Neurology* describes how personalized computer models of a patient's brain have broad applicability beyond epilepsy. The authors make the case that the true potential of personalized virtual brain models in neuroscience, medicine and neurotechnology remains to be further explored.

The authors envision that future advances in brain modeling will open a path to "digital twins" approaches in brain medicine. A "digital twin" is a type of personalized computational brain [model](#) that can be constantly updated with measured real-world data obtained from its real-life counterpart, i.e., the patient. While not aimed at being an [exact replica](#), increasing sophistication of these models is expected to further enhance their predictive power, bringing new clinical and research applications into reach.

The authors expect improvements along two main lines: high-resolution of the data and patient specificity. The integration of these factors is made possible within the HBP, through the use of modeling software, computing power, brain atlases and datasets provided on the digital research infrastructure EBRAINS.

More information: Viktor Jirsa et al, Personalised virtual brain models in epilepsy, *The Lancet Neurology* (2023). [DOI: 10.1016/S1474-4422\(23\)00008-X](https://doi.org/10.1016/S1474-4422(23)00008-X)

Provided by Human Brain Project

Citation: Advances in brain modeling open a path to digital twin approaches for brain medicine (2023, March 27) retrieved 21 November 2023 from <https://medicalxpress.com/news/2023-03-advances-brain-path-digital-twin.html>

<p>This document is subject to copyright. Apart from any fair dealing for the purpose of private study or research, no part may be reproduced without the written permission. The content is provided for information purposes only.</p>
--