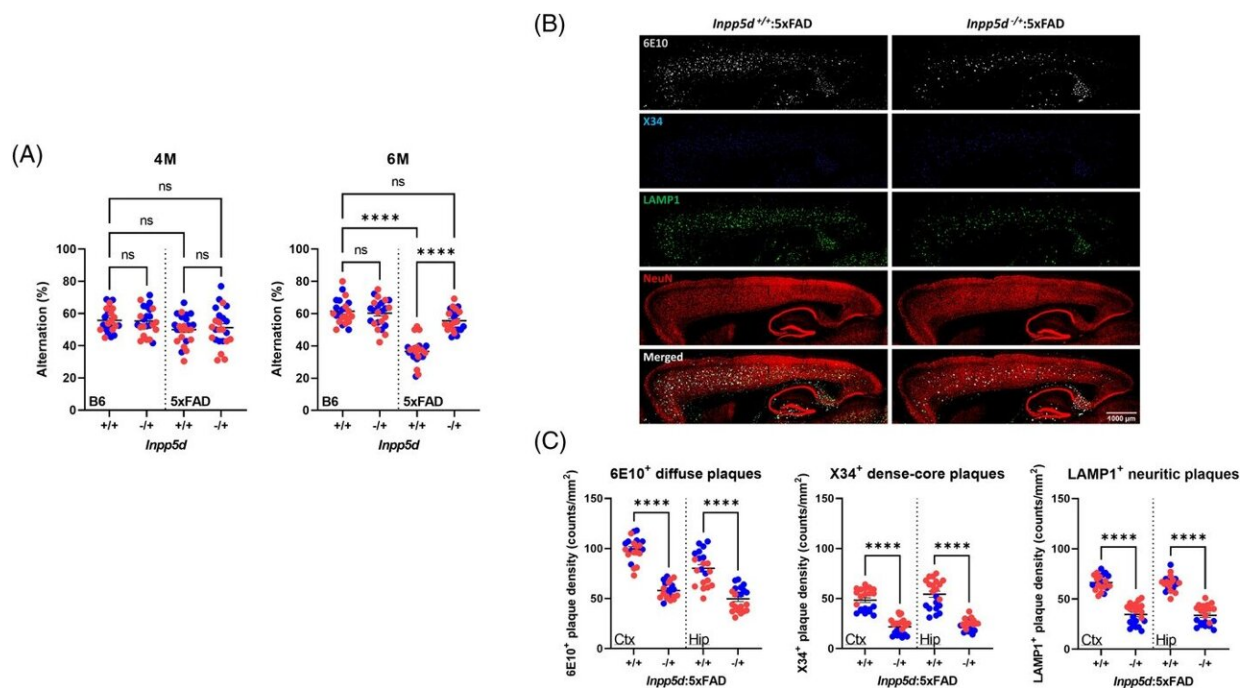


# Alzheimer's disease researchers study gene associated with the brain's immune cells

January 5 2023



*Inpp5d* haplodeficiency protects against cognitive impairment and amyloid beta ( $A\beta$ ) accumulation in 5xFAD mice. (A) Working memory of 4- and 6-month-old male (blue) and female (red) animal cohorts assessed by percent of spontaneous alternation in the Y-maze task ( $n = 20-24$  per genotype). Statistical analysis was performed by one-way analysis of variance (ANOVA) for spontaneous alternation followed by Tukey's post hoc test. Data are expressed as the mean  $\pm$  SEM (ns, not significant and \*\*\*\*p

Citation: Alzheimer's disease researchers study gene associated with the brain's immune cells (2023, January 5) retrieved 26 April 2023 from

<https://medicalxpress.com/news/2023-01-alzheimer-disease-gene-brain-immune.html>

This document is subject to copyright. Apart from any fair dealing for the purpose of private study or research, no part may be reproduced without the written permission. The content is provided for information purposes only.